

Product Brochure For A421

## Industrial Work Bench - IWB-2275

2200 x 750 x 900mm  
 1000kg Table Top Load Capacity



**On Sale**

Ex GST	Inc GST
<del>\$450.00</del>	<del>\$495.00</del>
<b>\$390.00</b>	<b>\$429.00</b>

ORDER CODE:	A421
MODEL:	IWB-2275
Bench Material (Type):	Laminated MDF Top
Table Top Load Capacity (kg):	1000
Number of Drawers (No.):	Optional
Table Dimensions (L x W x H) (mm):	2200 x 750 x 900
Nett Weight (kg):	87



### Description

The IWB-2275 Industrial-duty work bench is constructed from heavy duty powder coated steel frame to provide maximum rigidity for the most demanding industrial applications. The 41mm bench top consists of laminated MDF that is covered with an oil resistant 2mm high density laminate & it is finished with a rounded PVC edge ensuring it will withstand heavy loads.

A wide array of optional accessories are available to suit this bench such as drawer units, louvred backing panel along with a complete range of tool hooks, hangers and storage buckets making storing and locating your tools much easier.

### Features

- 1000kg total load capacity
- Heavy duty steel fabricated frame with powder coated finish for maximum rigidity
- 41mm thick top surface includes a 2mm high density laminate with bull nosed hard PVC edge
- Adjustable feet
- Please Note: 1000kg load capacity is calculated on even weight distribution over entire tabletop surface

Product Brochure For A421

**Specific Features**



Rounded-bull nosed hard PVC edge    Adjustable Feet - 16mm Internal thread    Steel leg bracing

**Recommended Accessories**

A4265

Industrial Backing Panel - Bench Mount

A422

2 Drawer - Industrial Under Bench Tooling Cabinet

A423

3 Drawer - Industrial Under Bench Tooling Cabinet

A4225

2 Drawer - Industrial Under Bench Tooling Cabinet



T764

6 Drawer - Industrial Tooling Cabinet

A439

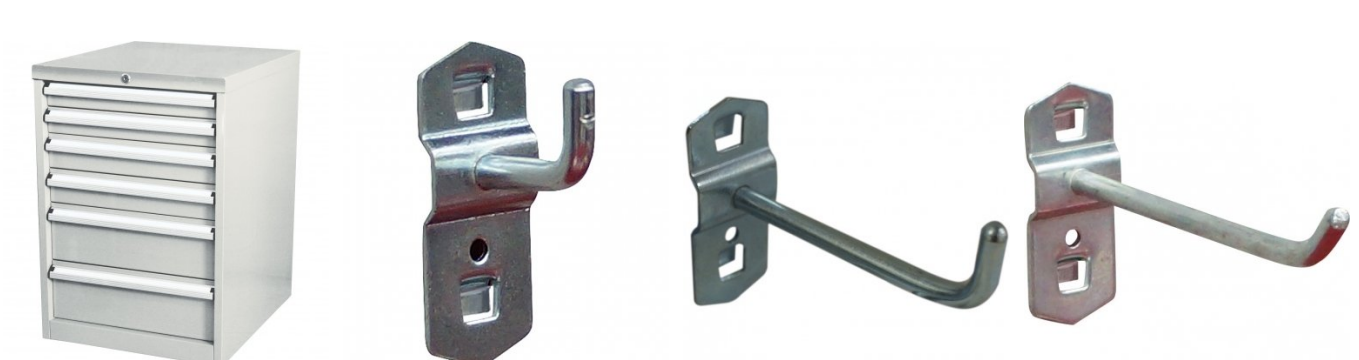
Hook - Single Prong

A440

Hook - Single Prong

A4401

Hook - Single Prong



Product Brochure For A421

A441  
 Hook - Double Prong



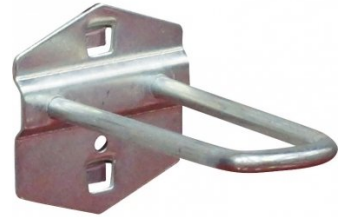
A442  
 Hook - Double Prong



A4492  
 Hook - U Shape Holder



A449  
 Hook - U Shape Holder



A4496  
 Round Tool Holder - Loop



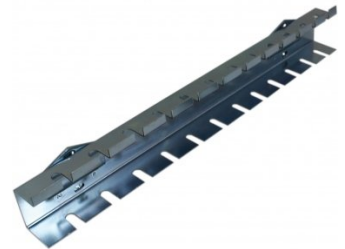
A444  
 Plier Holder - Triple Prong



A446  
 Holder - Spanner



A448  
 Holder - Screwdriver



A430  
 Plastic Bucket



A432  
 Plastic Bucket



A434  
 Plastic Bucket



A436  
 Plastic Bucket

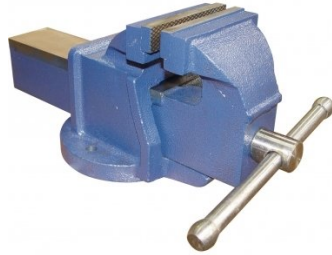


Product Brochure For A421

A359  
 Pneumatic Stool



V088  
 100mm Cast Iron Bench Vice



V081  
 100mm Forge Steel Utility Bench Vice with Anvil & Pipe Jaws



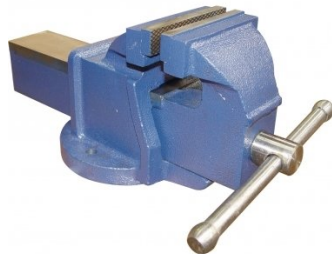
V069  
 100mm Steel Offset Fabricated Bench Vice



V079  
 100mm Cast Iron Offset Bench Vice



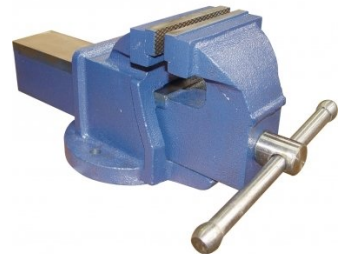
V089  
 127mm Cast Iron Bench Vice



V0815  
 125mm Forge Steel Utility Bench Vice with Anvil & Pipe Jaws



V090  
 152mm Cast Iron Bench Vice



V067  
 152mm Steel Offset Fabricated Bench Vice



V082  
 150mm Forge Steel Utility Bench Vice with Anvil & Pipe Jaws



V070  
 150mm Steel Offset Fabricated Bench Vice



V080  
 150mm Cast Iron Offset Bench Vice



Product Brochure For A421

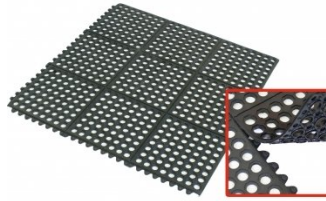
**V071**  
 200mm Steel Offset Fabricated  
 Bench Vice



**M800**  
 Rubber Mat - Anti-Fatigue



**M805**  
 Rubber Mat - Anti-Fatigue



**G160**  
 Industrial Bench Grinder



**G160A**  
 Industrial Bench Grinder



**G157**  
 Industrial Bench Grinder with  
 Multitool Linisher Attachment



**G156**  
 Industrial Bench Grinder with  
 Linisher



**G161**  
 Industrial Bench Grinder



**D590**  
 Medium-Duty Bench Drill - Belt  
 Drive



**H820**  
 Metric Hex Key Set with T-Bar  
 Handle



**H821**  
 Imperial Hex Key Set with T-Bar  
 Handle



**H822**  
 Torx® Key Set with T-Bar  
 Handle



Product Brochure For A421

**D1272**  
 Metric 135° Precision HSS Drill Set - 25 Piece



**D1282**  
 Imperial 135° Precision HSS Drill Set - 29 Piece



**D1285**  
 Metric 135° Precision HSS Drill Set - 51 Piece



**D1071**  
 HSS Sheet Metal Step Drill Set - 3 Piece



**D1051**  
 HSS Countersink Set (90° Cross Hole Type) - 4 Piece



**D1061**  
 HSS Countersink Set (90° 3 Flute Type) - 6 Piece



**D508**  
 HSS Industrial Centre Drill Set - 5Pcs



**D070**  
 Drill Sharpener



**H880**  
 Dead Blow, Nylon Face Hammer



**H870**  
 Soft Face Hammer



**H875**  
 Soft Face Hammer - 5 piece



**H885**  
 Auto Panel Restoration Kit - DIY



Product Brochure For A421

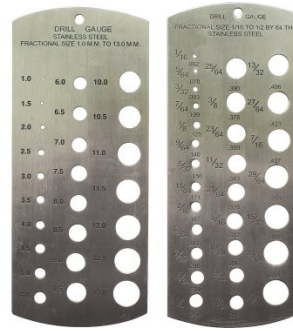
**H886**  
 Auto Panel Restoration Kit - Professional



**H887**  
 Auto Panel Restoration Kit - Master



**M988**  
 Metric & Imperial Drill Gauge



**Q616**  
 Feeler Gauge Set



**T012**  
 Metric Alloy Steel Tap & Die Set - 32 Piece



**T013**  
 Metric HSS Tap & Die Set - 32 Piece



**T014**  
 Metric Alloy Steel Tap & Die Set - 45 Piece



**T015**  
 Imperial Alloy Steel Tap & Die Set - 45 Piece



**T016**  
 Metric HSS Tap & Die Set - 45 Piece



**T870**  
 Screw Extractor Set - 10 piece



**T119**  
 Metric Thread Restorer File



**T120**  
 Imperial Thread Restorer File



Product Brochure For A421

**T100**  
 Metric Thread Repair Kit - 130 Piece



**T116**  
 Imperial Thread Restorer Tap & Die Kit - 26 Piece Set



**T115**  
 Metric Thread Restorer Tap & Die Kit - 15 Piece



**T117**  
 Metric, UNC, UNF Thread Restorer Tap & Die Kit - 48 Piece



**D108**  
 Metric Carbide Tipped Hole Saw Set



**D102**  
 Metric HSS Hole Saw Set



**F100**  
 Engineers Files, 5 Piece Set - Second Cut



**F120**  
 Engineers File, Flat - Coarse Cut



**F121**  
 Engineers File, Flat - Second Cut



**F122**  
 Engineers File, Flat - Smooth Cut



**F124**  
 Engineers File, Half Round - Coarse Cut



**F125**  
 Engineers File, Half Round - Second Cut



Product Brochure For A421

F126

Engineers File, Half Round - Smooth Cut



F127

Engineers File, Round - Coarse Cut



F128

Engineers File, Round - Second Cut



F129

Engineers File, Round - Smooth Cut



F160

Slapping File - Second Cut



F150

Flexible Body File Holder



F155

Flexible Body File



F156

Flexible Body File



P112

Hole Punch Set



S203

180° Straight Edge/Seaming Plier



S205

90° Edge/Seaming Plier



S200

Joggler & Punch Plier



Product Brochure For A421

**P368**  
Automatic Centre Punch



**P367**  
Centre Punch Set - 3 Piece



**P365**  
Pin Punch Set - 6 Piece



**P363**  
Cold Chisel Set - 3 Piece



**P364**  
Punch & Cold Chisel Set - 14 Piece



**N001**  
Nut & Blind Riveter Set - 130 Piece



**P350**  
Letter Punches



**P351**  
Number Punches



**P354**  
Letter Punches



**P355**  
Number Punches



**W103**  
Engineers Chalk Marker- 50 Splits



**W104D**  
White Liquid Paint Marker - Valve Action



Product Brochure For A421

**W104B**  
 Silver Streak - Welders Pencil



**W104A**  
 Orange Trades Marker Refills - All Purpose



**W104**  
 Trades Marker - All Purpose



**W104G**  
 Silver Streak Refills - Round Metal Marker



**W104C**  
 Silver Streak - Round Metal Marker



**D063**  
 Sheet Metal Deburring Tool



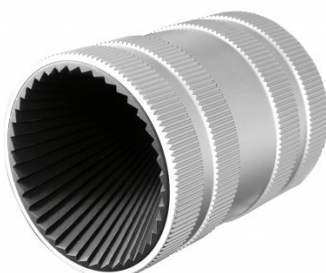
**D060**  
 Deburring Tool - Telescopic Shaft



**D065**  
 Universal Deburring Tool Set - 23 Piece



**D068**  
 Pipe/Tube Deburring Tool - Internal / External



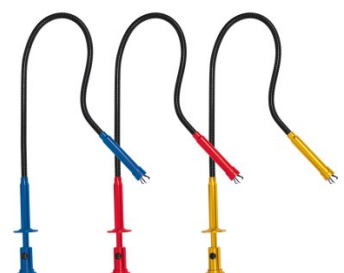
**B900**  
 Carbide Burr Double Cut Set - Short Series



**B905**  
 Carbide Burr Double Cut Set - Long Series



**M0010**  
 Pick Up Tool with Magnetic Head & 1 x LED Light



Product Brochure For A421

**M0009**  
 Magnetic Pick Up Tool & Inspection Mirror Set



**L300**  
 Magnetic Swarf Remover



**P020**  
 Hydraulic Chassis Punch Set



**W112**  
 Micro Welding Steel Clamp Set



**W113**  
 Butt Welding Aluminium & Steel Clamp Set



**S077**  
 Drilling, Tapping & Cutting Tool Lubricant Spray - 400g



**S075**  
 Cutting Tool Lubricant Paste - 200g



**O043**  
 Rust & Corrosion Preventive



**O042**  
 General Purpose Lubricant & Corrosion Inhibitor



**O040**  
 Rust & Corrosion Preventive



**O044**  
 Rust & Corrosion Preventive



**P030**  
 Bush Driver Set - 17 piece



Product Brochure For A421

**P031**  
 Bearing Race & Seal Driver Set  
 - 10 piece



**P005**  
 Ratcheting Gear Puller Set



**P013**  
 Puller Set with Slide Hammer



**P011**  
 Hydraulic Gear Puller Kit



**A037**  
 Air Tool Oil



**G076**  
 Top Up Pump



**G077**  
 Oil Transfer Pump



**G065**  
 Suction Gun - Oil Transfer



**G070**  
 Grease Gun



**G072**  
 Grease Gun



**G063**  
 Grease Gun



**G074**  
 Air Operated Grease Gun



Product Brochure For A421

G066

Air Operated Power Pistol -  
Grease Gun



G060

Grease Gun



G067

Lithium-ion Battery Operated -  
Grease Gun



G057

Super Blue Complex Grease  
Cartridge



O002

Superdraulic ISO 46 Hi Temp  
Hydraulic Oil

