

Product Brochure For B8090K1

Motorised Pipe & Tube Rotary Draw Bender with Rotary Positioning Table - RDB-325

Ø1/2" - Ø2" NB Pipe Capacity, Ø6.35 - Ø76.2mm Round Tube
 Capacity 3048mm (10ft) Rotary Positioning Table - IDX-10-325-M



Package Deal

Ex GST

Inc GST

\$35,950.00 **\$39,545.00**

Package Contents - SAVE \$4,455.00 (Inc)

1 x B8090 - Motorised Pipe & Tube Rotary Draw Bender ~~\$34,045.00~~
 1 x B8112 - 3048mm (10ft) Rotary Positioning Table IDX-10-325-M ~~\$9,955.00~~

Normal Price (Inc): \$44,000.00

ORDER CODE:	B8090K1
MODEL:	RDB-325
Material (Type):	Pipe & Tube
Material Section (Type):	Round, Square & Rod
Machine (Type):	Electric Hydraulic - Rotary Draw
Hydraulic Jack Size (Tonne):	~
Round Pipe Range (NB) - Mild Steel (inch / mm):	Ø1/2" - Ø2"
Round Tube Range (OD) - Mild Steel (inch / mm):	Ø6.35 - Ø76.2
Square Tube Range (inch / mm):	19.05 - 50.8
Tube Wall Thickness - Mild Steel (inch / mm):	~
Round Pipe (NB) x Wall Capacity - Mild Steel (inch):	Ø2" (Schedule 80)
Round Pipe (NB) x Wall Capacity - Aluminium (inch / mm):	Ø2" (Schedule 80)
Round Pipe (NB) x Wall Capacity - Stainless Steel (inch / mm):	Ø2" (Schedule 40)
Round Tube (OD) x Wall Capacity - Mild Steel (inch / mm):	Ø76.2 x 2.41
Round Tube (OD) x Wall Capacity - Aluminium (inch / mm):	Ø76.2 x 5.15
Round Tube (OD) x Wall Capacity - Copper, Brass (inch / mm):	~
Round Tube (OD) x Wall Capacity - Stainless Steel (inch / mm):	Ø76.2 x 2.41
Round Tube (OD) x Wall Capacity - Chromoly (inch / mm):	Ø76.2 x 2.1
Solid Rod - Mild Steel (inch / mm):	Ø31.75
Square Tube x Wall Capacity - Mild Steel (inch / mm):	50.8 x 3.17
Rectangle Tube x Wall Capacity - Mild Steel (inch / mm):	~
Bend Speed - Maximum (Deg / Sec):	180° / 10
Bend Direction:	~
Centre Line Radius - Maximum (CLR) (inch / mm):	16 1/2" / 419.1mm
Centre Line Radius - Minimum (CLR) (inch / mm):	1/2" / 12.7mm
Tube Formers Included (inch / mm):	~
Pipe Formers Included (inch / mm):	~
Spigot Size on Ram (inch / mm):	~
Angle Capacity (deg):	180°
Hydraulic Pressure - Maximum (psi):	~
Motor Power (kW / hp):	~
Voltage / Amperage (V / amp):	415
Nett Weight (kg):	545

Description

NOTE: Image shown with Optional Tooling.

Designed to be a workhorse in any shop for decades, this tube and pipe bender can tackle a huge capacity of 2" NB (7/32", schedule 80) pipe (mild steel T.S. 64,000 PSI) and 76.2mm OD round tubing.

Product Brochure For B8090K1

Features

- 16" (406.4mm) maximum centre line radius depending on material OD
- Rotates up to 360° degrees in either direction, ideal for rod applications if you use our optional universal bending plate
- Comes standard with a simple-to-use touchscreen controller
- Internal storage holds up to 170 programs of up to 10 bends per program
- Also accepts micro SD memory card to store programs
- Convenient foot pedal controls let you stop and start the machine while leaving your hands free
- Swing-away counter die system helps you save valuable time on tooling changes and increase your production
- You can add an optional indexing table to bend on varying planes and easily duplicate complex bends

Includes

- Foot pedal control with forward & reverse
- 3048mm (10ft) Rotary Positioning Table - IDX-10-325-M
- 63.5mm Index Chuck Thru Hole

Specific Features



Rotary Positioning Table



B8090K1



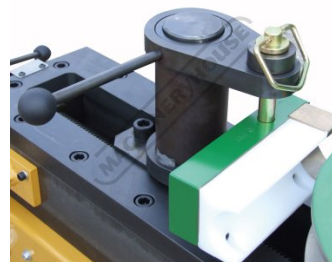
Insert 1



Insert 2



Insert 3



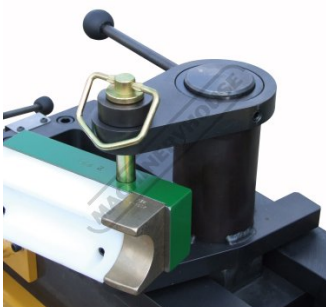
Insert 5



Wheels



Insert 7



Insert 8



Simple to use Touchscreen Controller



Foot Control Emergency Stop

Product Brochure For B8090K1

Recommended Accessories

B8119
 Pipe/Tube Bending Lube -
 475ml



B8112
 3048mm (10ft) Rotary
 Positioning Table



B8113
 6096mm (20ft) Rotary
 Positioning Table



B8122
 1/2" NB x 180° Round Pipe Die
 Set



B8131
 3/4" NB x 180° Round Pipe Die
 Set



B8141
 1" NB x 180° Round Pipe Die
 Set



B8152
 1-1/4" NB x 180° Round Pipe
 Die Set



B8166
 1-1/2" NB x 180° Round Pipe
 Die Set



Product Brochure For B8090K1

B8175

2" NB x 180° Round Pipe Die Set



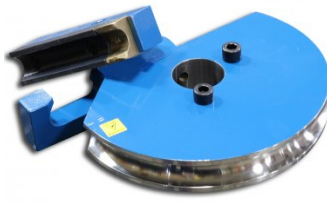
B8253

25.4mm OD x 180° Round Tube Die Set



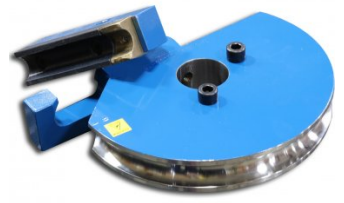
B8271

31.75mm OD x 180° Round Tube Die Set



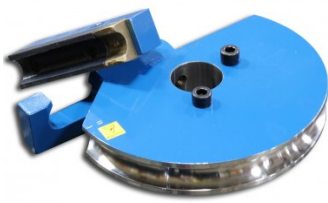
B8287

38.1mm OD x 180° Round Tube Die Set



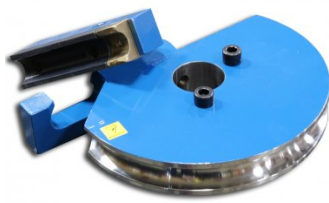
B8305

44.45mm OD x 180° Round Tube Die Set



B8312

50.8mm OD x 180° Round Tube Die Set



B8405C

20mm OD x 180° Square Tube Die Set - Crush Bend



B8410C

25mm OD x 180° Square Tube Die Set - Crush Bend



B8418C

30mm OD x 180° Square Tube Die Set - Crush Bend



B8428C

40mm OD x 180° Square Tube Die Set - Crush Bend



B8436C

50mm OD x 180° Square Tube Die Set - Crush Bend



M977

Digital Bevel Box

