

Product Brochure For B8100

Motorised Pipe & Tube Rotary Draw Bender - RDB-480

Ø1/2" - Ø4" NB Pipe Capacity, Ø19.05 - Ø127mm Round Tube Capacity

Please Call



ORDER CODE:	B8100
MODEL:	RDB-480
Material (Type):	Pipe & Tube
Material Section (Type):	Round, Square & Rod
Machine (Type):	Electric Hydraulic - Rotary Draw
Hydraulic Jack Size (Tonne):	~
Round Pipe Range (NB) - Mild Steel (inch / mm):	Ø1/2" - Ø4"
Round Tube Range (OD) - Mild Steel (inch / mm):	Ø19.05 - Ø127
Square Tube Range (inch / mm):	12.7 - 50.8
Tube Wall Thickness - Mild Steel (inch / mm):	~
Round Pipe (NB) x Wall Capacity - Mild Steel (inch):	Ø4" (Schedule 80)
Round Pipe (NB) x Wall Capacity - Aluminium (inch / mm):	~
Round Pipe (NB) x Wall Capacity - Stainless Steel (inch / mm):	~
Round Tube (OD) x Wall Capacity - Mild Steel (inch / mm):	Ø127 x 2.11
Round Tube (OD) x Wall Capacity - Aluminium (inch / mm):	~
Round Tube (OD) x Wall Capacity - Copper, Brass (inch / mm):	~
Round Tube (OD) x Wall Capacity - Stainless Steel (inch / mm):	~
Round Tube (OD) x Wall Capacity - Chromoly (inch / mm):	~
Solid Rod - Mild Steel (inch / mm):	~
Square Tube x Wall Capacity - Mild Steel (inch / mm):	~
Rectangle Tube x Wall Capacity - Mild Steel (inch / mm):	~
Bend Speed - Maximum (Deg / Sec):	180° / 25
Bend Direction:	~
Centre Line Radius - Maximum (CLR) (inch / mm):	28" / 711.2mm
Centre Line Radius - Minimum (CLR) (inch / mm):	6" / 152.4mm
Tube Formers Included (inch / mm):	~
Pipe Formers Included (inch / mm):	~
Spigot Size on Ram (inch / mm):	~
Angle Capacity (deg):	190°
Hydraulic Pressure - Maximum (psi):	~
Motor Power (kW / hp):	7.5 / 10
Voltage / Amperage (V / amp):	415
Nett Weight (kg):	2730



Description

This programmable pipe bender shapes material at blistering speeds with professional accuracy. Made in the USA, the RDB-480 pipe bender for sale will revolutionize the efficiency of your fabrication shop.

Features

- Why choose Baileigh's RDB-480 Tube Bender over competing machines?
 - Cuts down on time and effort for repeat projects by storing complex bend specifications as programs.
 - Reduces delays with extremely fast automatic bending.
 - You can rely on after-sale support and project advice from Baileigh's experienced team—just a phone call away—for as long as you're using the RDB-480.
 - Accommodates a wide range of tooling, available from Baileigh, to suit almost any application.
 - Runs on 415 volt three-phase power
 - Tackles heavy-duty materials, bending up to 127mm tubing and 4" NB (11/32", schedule 80) pipe
- Rotary draw bender smoothly executes 180° bends in just 20 seconds and can complete up to 360° bends

Product Brochure For B8100

- Stores up to 170 programs of 10 bends each in its internal memory and accepts limitless external memory
- Easy-to-use touchscreen or handy foot pedal can both operate the bender, when not in manual mode
- 2-piece die mount loosens to release bent tubing without a hassle
- Covered by a 1-year parts warranty and lifetime technical support

Specific Features



TouchScreen



Fork Pocket

Recommended Accessories

B8119

Pipe/Tube Bending Lube -
475ml



B8122

1/2" NB x 180° Round Pipe Die
Set



B8131

3/4" NB x 180° Round Pipe Die
Set



B8141

1" NB x 180° Round Pipe Die
Set



Product Brochure For B8100

B8152
 1-1/4" NB x 180° Round Pipe
 Die Set



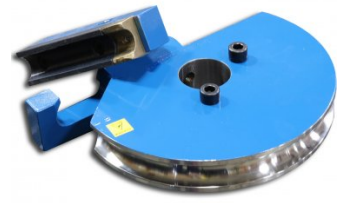
B8166
 1-1/2" NB x 180° Round Pipe
 Die Set



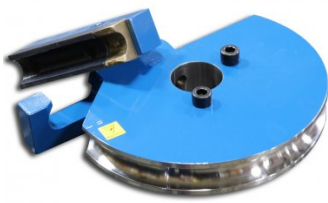
B8175
 2" NB x 180° Round Pipe Die
 Set



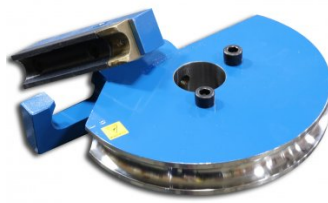
B8253
 25.4mm OD x 180° Round Tube
 Die Set



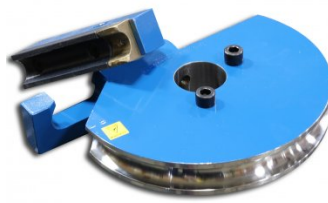
B8271
 31.75mm OD x 180° Round
 Tube Die Set



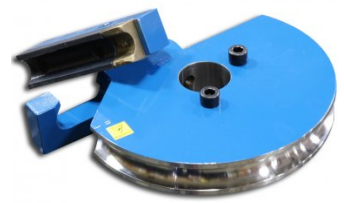
B8287
 38.1mm OD x 180° Round Tube
 Die Set



B8305
 44.45mm OD x 180° Round
 Tube Die Set



B8312
 50.8mm OD x 180° Round Tube
 Die Set



B8405C
 20mm OD x 180° Square Tube
 Die Set - Crush Bend



B8410C
 25mm OD x 180° Square Tube
 Die Set - Crush Bend



B8418C
 30mm OD x 180° Square Tube
 Die Set - Crush Bend



B8428C
 40mm OD x 180° Square Tube
 Die Set - Crush Bend



Product Brochure For B8100

B8436C

50mm OD x 180° Square Tube
Die Set - Crush Bend



M977

Digital Bevel Box

