

Product Brochure For C1054

Collet Chuck - 3MT x ER40 - 3MT x ER40

Ø3-Ø26mm

On Sale

Ex GST

~~\$90.00~~

\$76.36

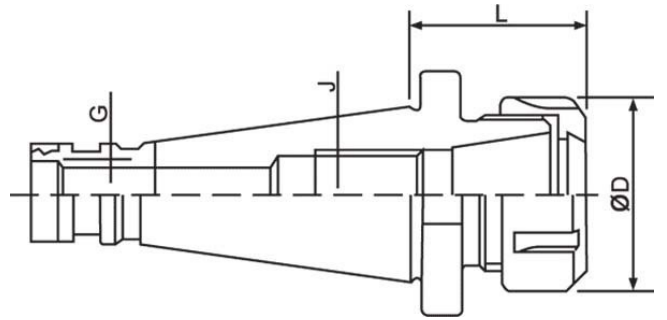
Inc GST

~~\$99.00~~

\$84.00



| | |
|------------------------|----------------|
| ORDER CODE: | C1054 |
| Collet Type: | ER40 |
| Maximum Capacity (mm): | 26 |
| Taper (J): | 3MT |
| Draw Bar (G): | 1/2" Whitworth |
| L (mm): | 70 |
| ØD (mm): | 63 |
| Nett Weight (kg): | 1.3 |



Description

All ER collet chucks meet the specifications of machine tool builders (DIN 2080 taper Shank Grade AT-3 - 85% taper contact) Maintain a high level of accuracy.

Features

- Precision Ground
- Rated to 10,000rpm

Product Brochure For C1054

Specific Features



Top View



Shown Apart



Side View

Recommended Accessories

C969
 ER40 Collet Chuck Wrench



C118
 Collet Nut - ER40 Ball Bearing Nut



C957
 ER40 Collet Set - 7 Piece



C958
 ER40 Collet Set - 23 Piece



C960
 Collet & Chuck Set - 9 Piece



C964
 Collet & Chuck Set - 25 Piece



C940
 ER40 Collet

