

Product Brochure For C106

Collet Chuck - R8 x ER32 - R8 x ER32

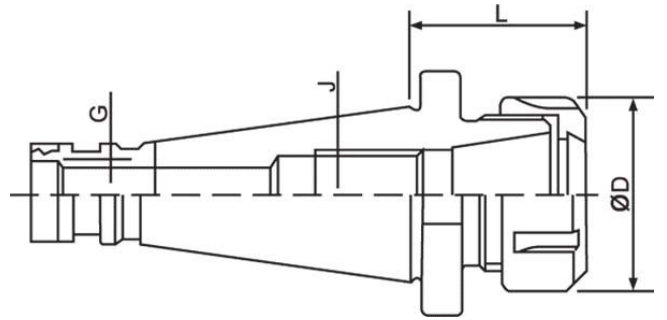
Ø2-Ø20mm

**On Sale**

Ex GST	Inc GST
<b>\$140.00</b>	<b>\$154.00</b>
<b>\$118.18</b>	<b>\$130.00</b>



ORDER CODE:	C106
Collet Type:	ER32
Maximum Capacity (mm):	20
Taper (J):	R8
Draw Bar (G):	7/16" x 20UNF
L (mm):	40
ØD (mm):	50
Nett Weight (kg):	0.6



**Description**

All ER collet chucks meet the specifications of machine tool builders (DIN 2080 taper Shank Grade AT-3 - 85% taper contact) Maintain a high level of accuracy.

**Features**

- Precision Ground
- Rated to 10,000rpm

Product Brochure For C106

**Recommended Accessories**

C932  
ER32 Collet Chuck Wrench



C117  
Collet Nut ER32



C903  
ER32 Collet



C921  
ER32 Collet Set - 6 Piece



C922  
ER32 Collet Set - 18 Piece



C923  
Collet & Chuck Set - 8 Piece



C927  
Collet & Chuck Set - 20 Piece

