

Product Brochure For C198

### 3 Jaw Self Centring Lathe Chuck - K11 SERIES

Ø80mm  
 Back Plate Mount

**On Sale**

<b>Ex GST</b>	<b>Inc GST</b>
<b>\$100.00</b>	<b>\$110.00</b>
<b>\$86.36</b>	<b>\$95.00</b>



ORDER CODE:	C198
Mounting Type:	Back Plate Mount
Chuck Size (mm):	Ø80
Outside Jaw (mm):	2 - 22
Inside Jaw (mm):	22 - 63
Speed (rpm):	4000
D1 (mm):	55
D2 (mm):	66
D3 (bore) (mm):	16
H (mm):	66
H1 (mm):	50
H2 (mm):	~
h (lowercase) (mm):	3.5
z-d (mm):	3 x M6
Nett Weight (kg):	2



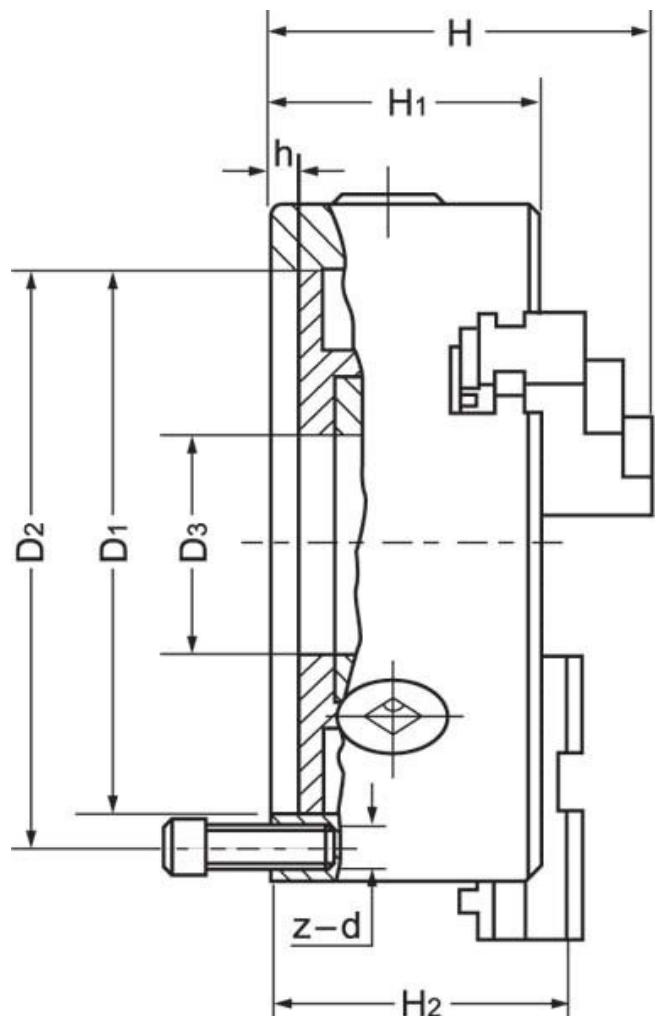
#### Description

K11 Series cast iron body lathe chucks are built to GB/T 4346.2-2002 standard, and supplied with one piece standard and reverse jaws.

World-class and industry leader in manufacturing manual lathe chucks for over 30 years. ToolMaster precision tolerance lathe chucks are ISO 9001-2000 approved, and ensure high quality with accuracy testing on every chuck.

#### Includes

- Outside jaws
- Inside jaws
- Mounting screws
- Chuck key



Product Brochure For C198

---

**Specific Features**



Back Plate Mount



Included Accessories

**Recommended Accessories**

C2860  
Chuck Key

M055  
Magnetic Base and Dial  
Indicator

