

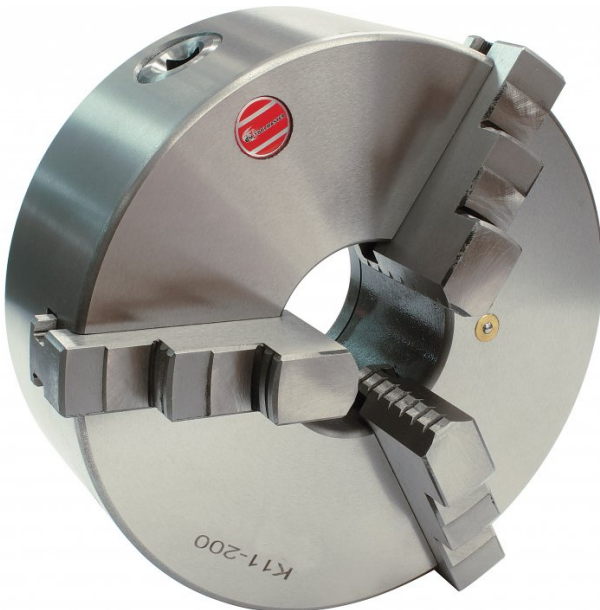
Product Brochure For C205

3 Jaw Self Centring Lathe Chuck - K11 SERIES

Ø200mm
 Back Plate Mount

On Sale

Ex GST	Inc GST
\$230.00	\$253.00
\$199.09	\$219.00



ORDER CODE:	C205
Mounting Type:	Back Plate Mount
Chuck Size (mm):	Ø200
Outside Jaw (mm):	4 - 85
Inside Jaw (mm):	65 - 200
Speed (rpm):	2000
D1 (mm):	165
D2 (mm):	180
D3 (bore) (mm):	65
H (mm):	109
H1 (mm):	75
H2 (mm):	~
h (lowercase) (mm):	5
z-d (mm):	3 x M10
Nett Weight (kg):	16.5



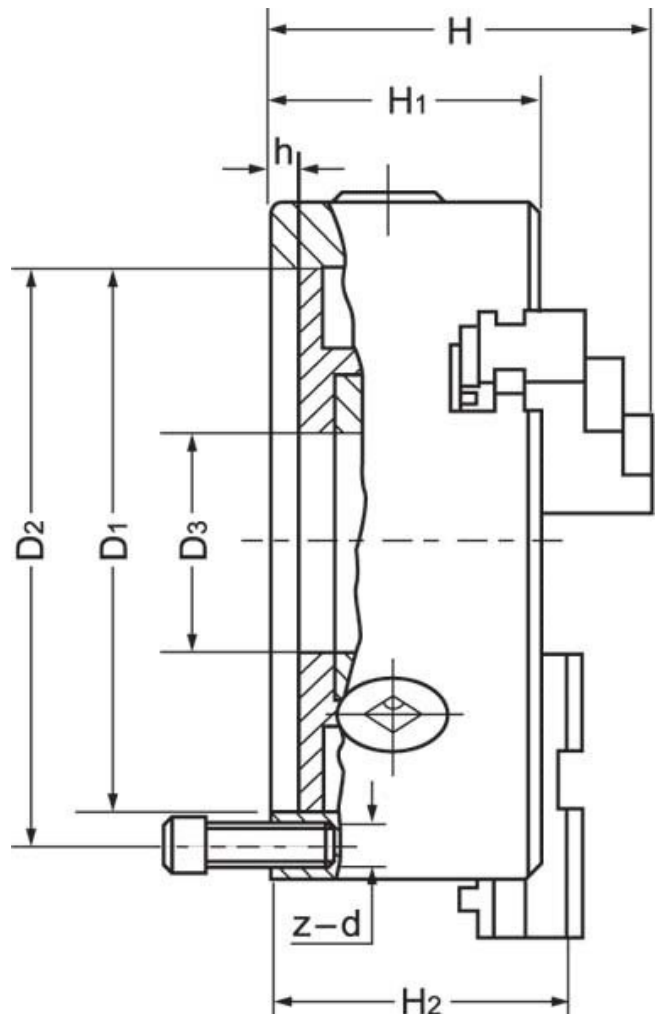
Description

K11 Series cast iron body lathe chucks are built to GB/T 4346.2-2002 standard, and supplied with one piece standard and reverse jaws.

World-class and industry leader in manufacturing manual lathe chucks for over 30 years. ToolMaster precision tolerance lathe chucks are ISO 9001-2000 approved, and ensure high quality with accuracy testing on every chuck.

Includes

- Outside jaws
- Inside jaws
- Mounting screws
- Chuck key



Product Brochure For C205

Specific Features



Rear View



Parts



Front View

Recommended Accessories

C7651
 Soft Jaw & Base Set



L287
 D1-4 Camlock Back Plate



L2875
 D1-5 Camlock Back Plate



A358
 Sky Hook Lifting Device



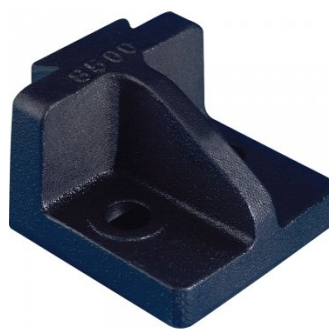
A358A
 Chuck Hook



A358B
 Choker Collar



A358C
 Bolt Down Adaptor



C2864
 Chuck Key



Product Brochure For C205

M055

Magnetic Base and Dial
Indicator

