

Product Brochure For C206

3 Jaw Self Centring Lathe Chuck - K11 SERIES

Ø250mm
 Back Plate Mount

On Sale

Ex GST	Inc GST
\$300.00	\$330.00
\$253.64	\$279.00



ORDER CODE:	C206
Mounting Type:	Back Plate Mount
Chuck Size (mm):	Ø250
Outside Jaw (mm):	6 - 110
Inside Jaw (mm):	90 - 250
Speed (rpm):	1600
D1 (mm):	206
D2 (mm):	226
D3 (bore) (mm):	80
H (mm):	120
H1 (mm):	80
H2 (mm):	~
h (lowercase) (mm):	5
z-d (mm):	3 x M12
Nett Weight (kg):	26



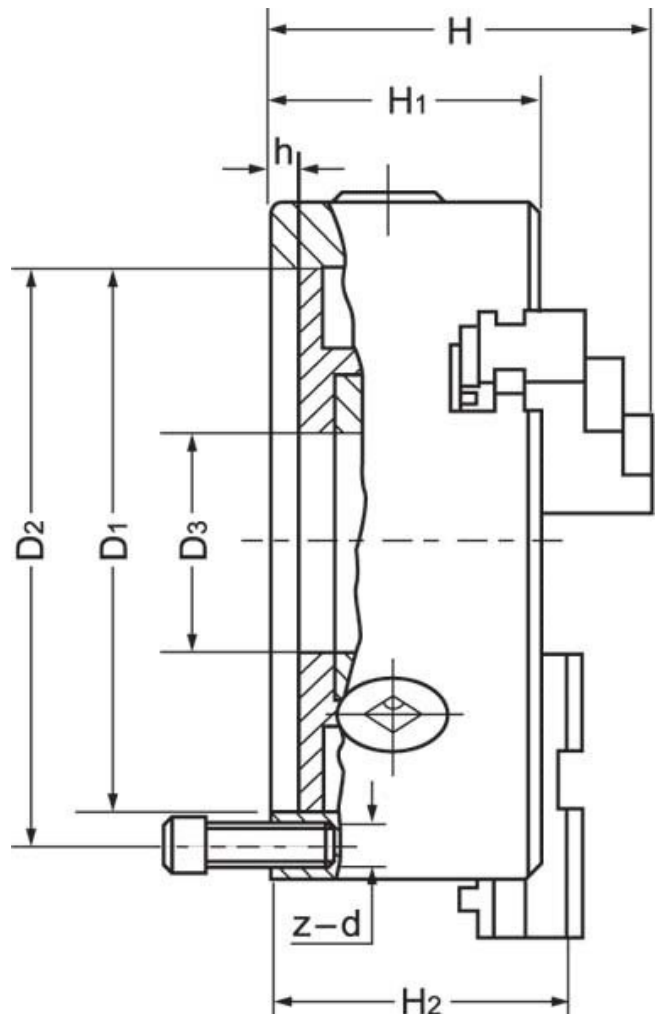
Description

K11 Series cast iron body lathe chucks are built to GB/T 4346.2-2002 standard, and supplied with one piece standard and reverse jaws.

World-class and industry leader in manufacturing manual lathe chucks for over 30 years. ToolMaster precision tolerance lathe chucks are ISO 9001-2000 approved, and ensure high quality with accuracy testing on every chuck.

Includes

- Outside jaws
- Inside jaws
- Mounting screws
- Chuck key



Product Brochure For C206

Specific Features



Back Plate Mount



Included Accessories



Front View

Recommended Accessories

C7661
 Soft Jaw & Base Set

L2875
 D1-5 Camlock Back Plate

C2864
 Chuck Key

A358
 Sky Hook Lifting Device



A358A
 Chuck Hook

A358B
 Choker Collar

A358C
 Bolt Down Adaptor

M055
 Magnetic Base and Dial Indicator

