

Product Brochure For C208

3 Jaw Self Centring Lathe Chuck - K11 SERIES

Ø320mm
 Back Plate Mount

On Sale

| | |
|-----------------|-----------------|
| Ex GST | Inc GST |
| \$650.00 | \$715.00 |
| \$550.00 | \$605.00 |



| | |
|---------------------|------------------|
| ORDER CODE: | C208 |
| Mounting Type: | Back Plate Mount |
| Chuck Size (mm): | Ø320 |
| Outside Jaw (mm): | 11.5 - 165 |
| Inside Jaw (mm): | 110 - 340 |
| Speed (rpm): | 1200 |
| D1 (mm): | 270 |
| D2 (mm): | 290 |
| D3 (bore) (mm): | 100 |
| H (mm): | 142 |
| H1 (mm): | 95 |
| H2 (mm): | ~ |
| h (lowercase) (mm): | 11 |
| z-d (mm): | 3 x M16 |
| Nett Weight (kg): | 47.5 |



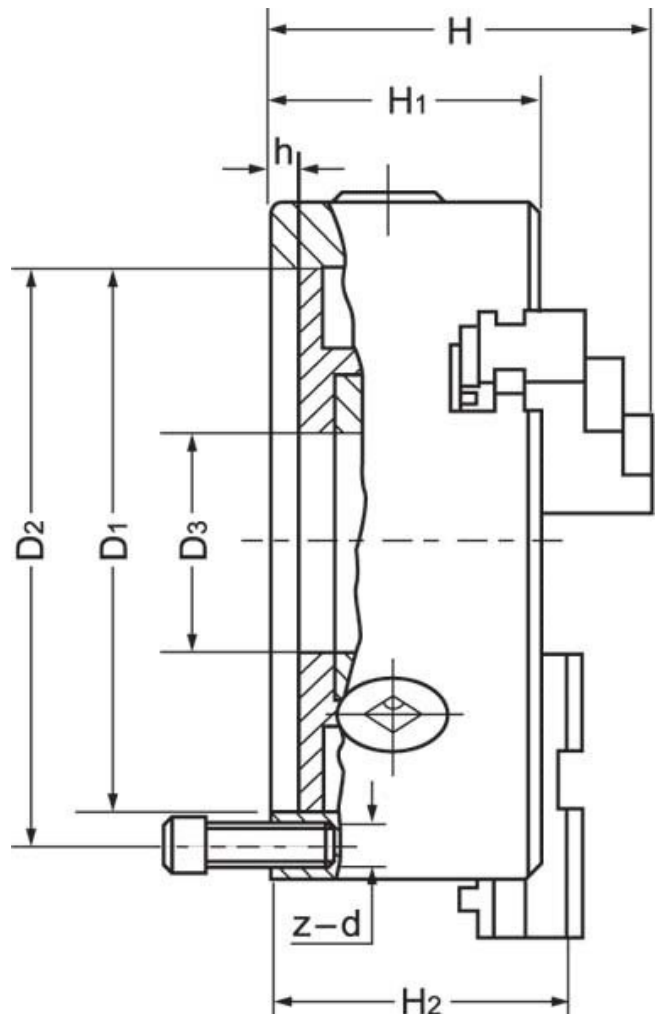
Description

K11 Series cast iron body lathe chucks are built to GB/T 4346.2-2002 standard, and supplied with one piece standard and reverse jaws.

World-class and industry leader in manufacturing manual lathe chucks for over 30 years. ToolMaster precision tolerance lathe chucks are ISO 9001-2000 approved, and ensure high quality with accuracy testing on every chuck.

Includes

- Outside jaws
- Inside jaws
- Mounting screws
- Chuck key



Product Brochure For C208

Specific Features



Rear View



Parts



Front View

Recommended Accessories

C7671
Soft Jaw & Base Set



L289
D1-6 Camlock Back Plate



L286
D1-8 Camlock Back Plate



C2866
Chuck Key



M055
Magnetic Base and Dial Indicator



A358
Sky Hook Lifting Device



A358A
Chuck Hook



A358B
Choker Collar



Product Brochure For C208

A358C
Bolt Down Adaptor

