

Product Brochure For C210

### 3 Jaw Self Centring Lathe Chuck - K11 SERIES

Ø400mm  
 Back Plate Mount

**On Sale**

<b>Ex GST</b>	<b>Inc GST</b>
<b>\$990.00</b>	<b>\$1,089.00</b>
<b>\$850.00</b>	<b>\$935.00</b>



ORDER CODE:	C210
Mounting Type:	Back Plate Mount
Chuck Size (mm):	Ø400
Outside Jaw (mm):	15 - 210
Inside Jaw (mm):	120 - 400
Speed (rpm):	1000
D1 (mm):	340
D2 (mm):	368
D3 (bore) (mm):	145
H (mm):	154
H1 (mm):	106.5
H2 (mm):	~
h (lowercase) (mm):	6
z-d (mm):	3 x M16
Nett Weight (kg):	71



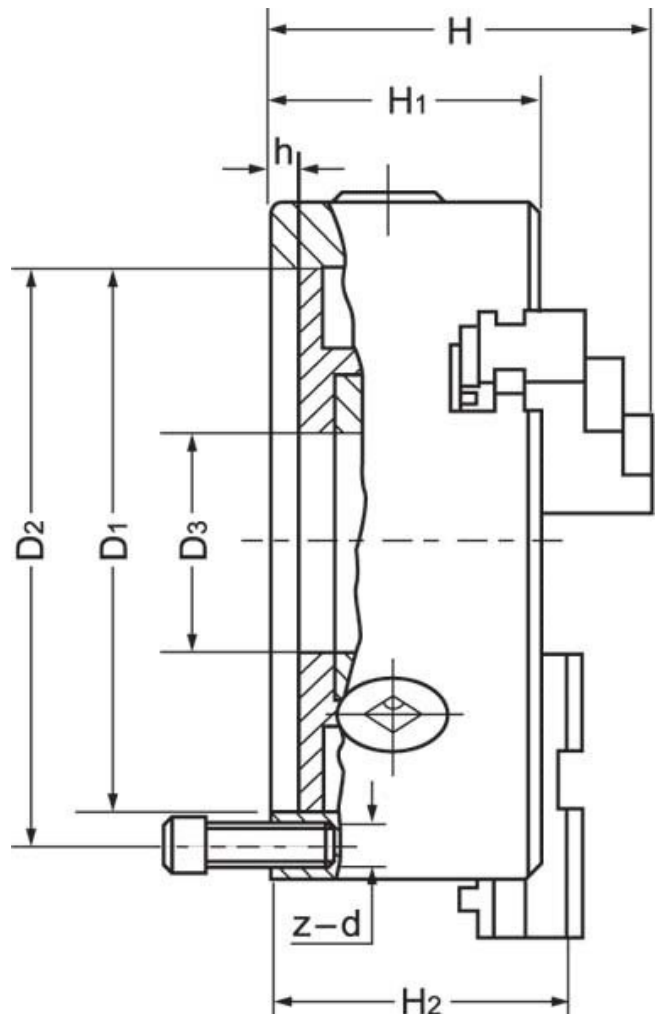
#### Description

K11 Series cast iron body lathe chucks are built to GB/T 4346.2-2002 standard, and supplied with one piece standard and reverse jaws.

World-class and industry leader in manufacturing manual lathe chucks for over 30 years. ToolMaster precision tolerance lathe chucks are ISO 9001-2000 approved, and ensure high quality with accuracy testing on every chuck.

#### Includes

- Outside jaws
- Inside jaws
- Mounting screws
- Chuck key



Product Brochure For C210

**Specific Features**



Back Plate Mount



Included Accessories



Front View

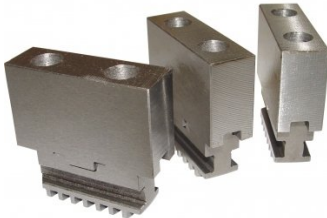
**Recommended Accessories**

C7701  
 Soft Jaw & Base Set

L2884  
 D1-11 Camlock Back Plate

M055  
 Magnetic Base and Dial Indicator

A358  
 Sky Hook Lifting Device



A358A  
 Chuck Hook

A358B  
 Choker Collar

A358C  
 Bolt Down Adaptor

