

Product Brochure For C232

4 Jaw Independent Lathe Chuck - K72-125

Ø125mm
 Back Plate Mount

On Sale

Ex GST	Inc GST
\$115.00	\$126.50
\$99.09	\$109.00



ORDER CODE:	C232
Chuck Size:	Ø125
External Jaw Range (mm):	48 - 125
Internal Jaw Range (mm):	7 - 57
Speed (rpm):	3000
D1 (mm):	95
D2 (mm):	108
D3 (mm):	30
H1 (mm):	56
h (mm):	4.5
z-d (mm):	4 - M8
Nett Weight (kg):	5.1

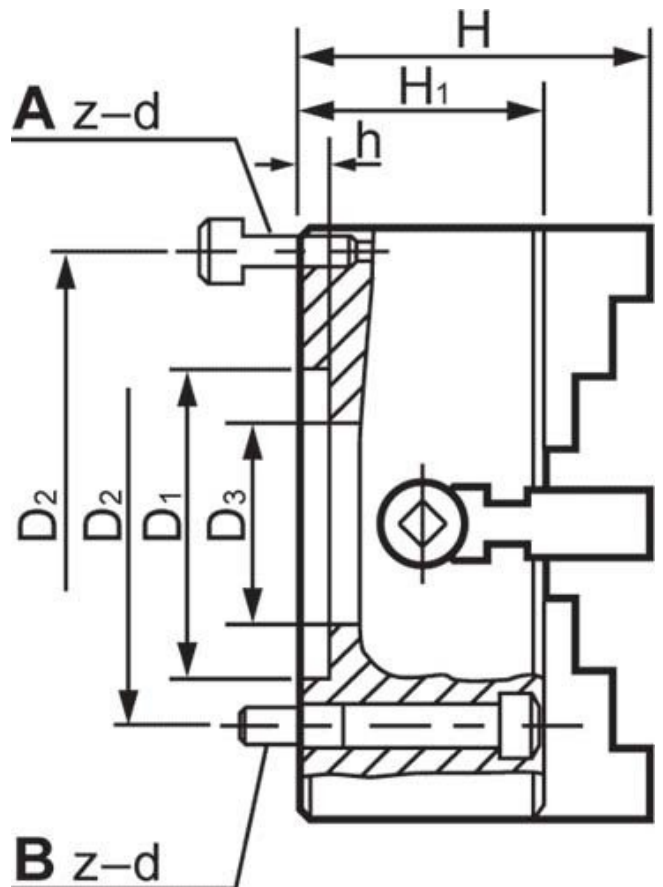


Description

Manufactured from High Strength semi steel and precision machined
 Jaws are case-hardened to minimise wear
 Operating screws are made from alloy steel and case-hardened

Features

- Rear Mounting



Product Brochure For C232

Specific Features



Back Plate Mount



Included Accessories



Front View

Recommended Accessories

L287
 D1-4 Camlock Back Plate

L2875
 D1-5 Camlock Back Plate

L289
 D1-6 Camlock Back Plate

L286
 D1-8 Camlock Back Plate



L2884
 D1-11 Camlock Back Plate

