

Product Brochure For C251

4 Jaw Independent Lathe Chuck - K72-200

Ø200mm

Back Plate Mount

On Sale

Ex GST

Inc GST

~~\$220.00~~

~~\$242.00~~

\$190.00

\$209.00



ORDER CODE:	C251
Chuck Size:	Ø200
External Jaw Range (mm):	130 - 200
Internal Jaw Range (mm):	4 - 90
Speed (rpm):	2000
D1 (mm):	80
D2 (mm):	112
D3 (mm):	70
H1 (mm):	71
h (mm):	6
z-d (mm):	4 - M10
Nett Weight (kg):	15

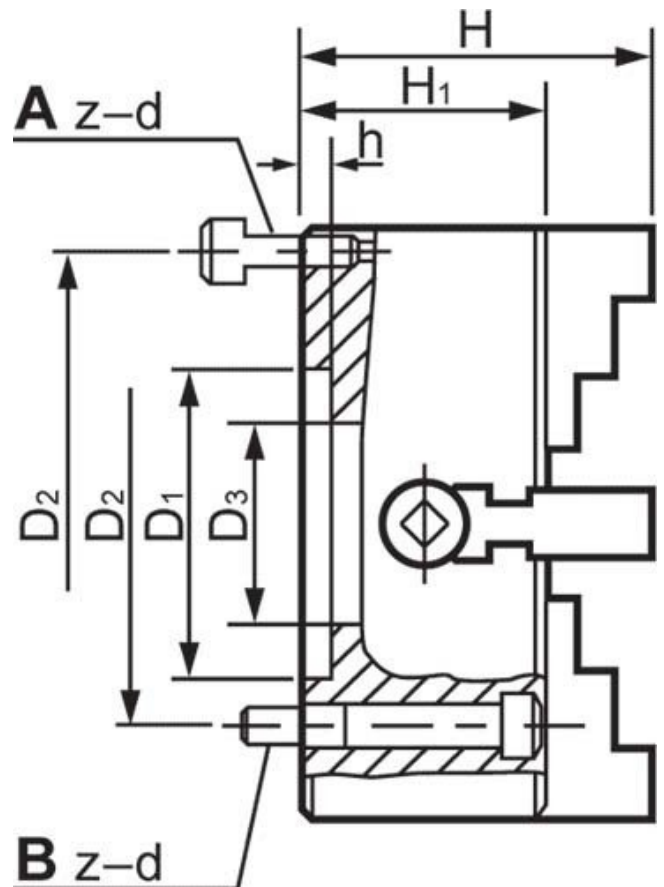


Description

Manufactured from High Strength semi steel and precision machined
 Jaws are case-hardened to minimise wear
 Operating screws are made from alloy steel and case-hardened

Features

- Front Mounting



Product Brochure For C251

Specific Features



Back Plate Mount



Included Accessories



Front View

Recommended Accessories

L287
 D1-4 Camlock Back Plate

L2875
 D1-5 Camlock Back Plate

L289
 D1-6 Camlock Back Plate

L286
 D1-8 Camlock Back Plate



L2884
 D1-11 Camlock Back Plate

