

Product Brochure For C259

## 4 Jaw Independent Lathe Chuck - K72-500

Ø500mm

Back Plate Mount

**On Sale**

Ex GST

Inc GST

**\$1,050.00**

**\$1,155.00**

**\$890.00**

**\$979.00**



ORDER CODE:	C259
Chuck Size:	Ø500
External Jaw Range (mm):	125 - 500
Internal Jaw Range (mm):	35 - 300
Speed (rpm):	800
D1 (mm):	200
D2 (mm):	236
D3 (mm):	170
H1 (mm):	106
h (mm):	8
z-d (mm):	4 - M20
Nett Weight (kg):	102

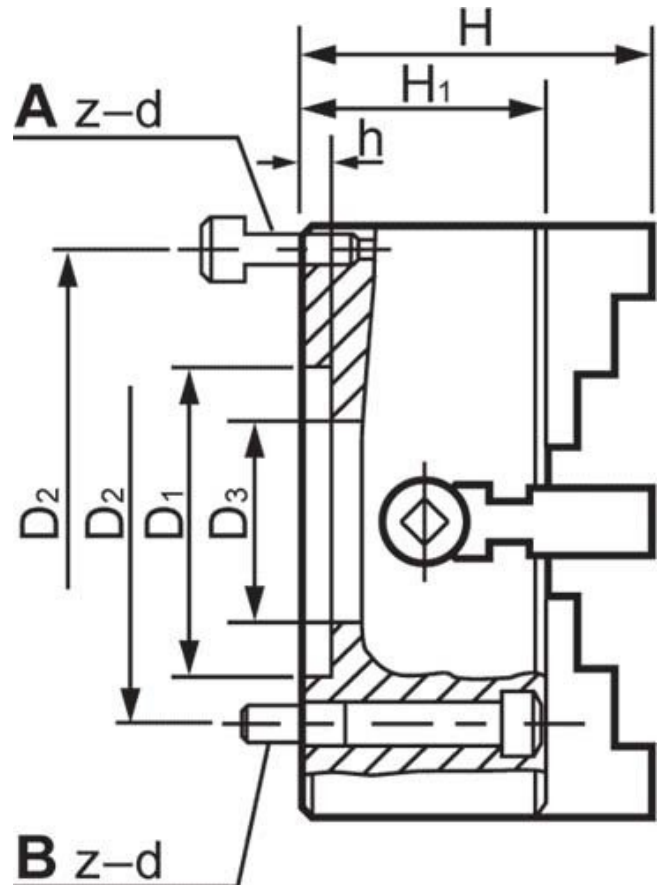


### Description

Manufactured from High Strength semi steel and precision machined Jaws are case-hardened to minimise wear  
 Operating screws are made from alloy steel and case-hardened

### Features

- Front Mounting



Product Brochure For C259

**Specific Features**



Rear View



Included Accessories



Front View

**Recommended Accessories**

L287

D1-4 Camlock Back Plate

L2875

D1-5 Camlock Back Plate

L289

D1-6 Camlock Back Plate

L286

D1-8 Camlock Back Plate



L2884

D1-11 Camlock Back Plate

A358

Sky Hook Lifting Device

A358A

Chuck Hook

A358B

Choker Collar



Product Brochure For C259

---

A358C  
Bolt Down Adaptor

