

Product Brochure For C281

3 Jaw Self Centring Lathe Chuck - K11 SERIES

Ø200mm
 Front Mount

On Sale

Ex GST	Inc GST
\$270.00	\$297.00
\$226.36	\$249.00



ORDER CODE:	C281
Mounting Type:	Front Mount
Chuck Size (mm):	Ø200
Outside Jaw (mm):	4 - 85
Inside Jaw (mm):	65 - 200
Speed (rpm):	2000
D1 (mm):	165
D2 (mm):	180
D3 (bore) (mm):	65
H (mm):	109
H1 (mm):	75
H2 (mm):	~
h (lowercase) (mm):	5
z-d (mm):	3 x M10
Nett Weight (kg):	19.3



Description

K11 Series front mount cast iron body lathe chucks are built to GB/T 4346.2-2002 standard, and supplied with one piece standard and reverse jaws.

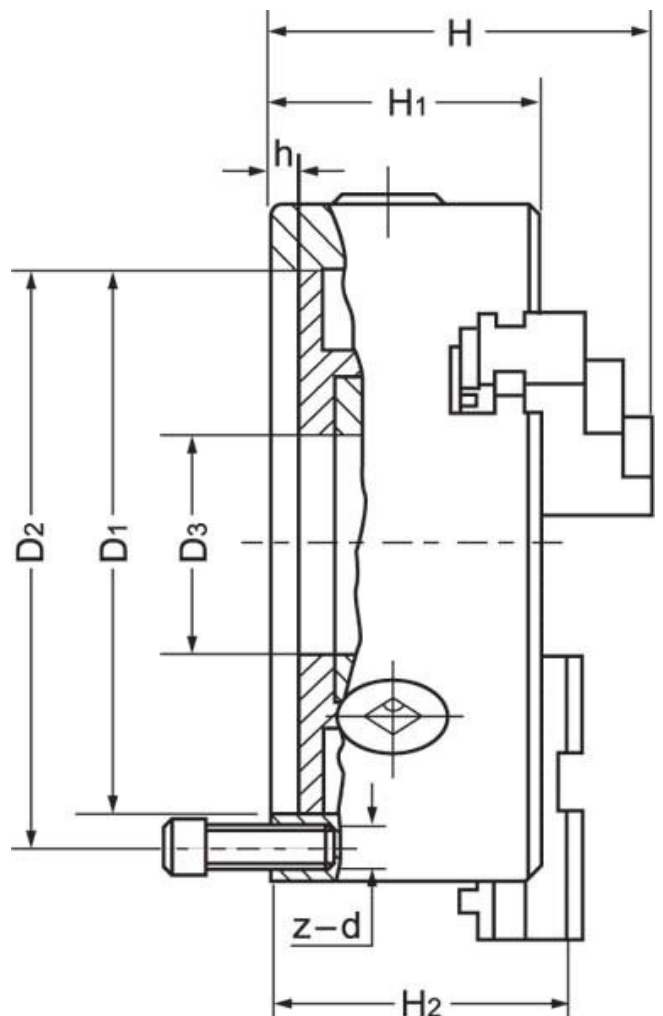
World-class and industry leader in manufacturing manual lathe chucks for over 30 years. ToolMaster precision tolerance lathe chucks are ISO 9001-2000 approved, and ensure high quality with accuracy testing on every chuck.

Features

- Ideal for Rotary Tables

Includes

- Outside jaws
- Inside jaws
- Mounting screws
- Chuck key



Product Brochure For C281

Specific Features



Rear View



Parts



Front View

Recommended Accessories

L287
 D1-4 Camlock Back Plate

L2875
 D1-5 Camlock Back Plate

A358
 Sky Hook Lifting Device

A358A
 Chuck Hook



A358B
 Choker Collar

A358C
 Bolt Down Adaptor

C2864
 Chuck Key

