

Product Brochure For C290

## Heavy Duty Drill Chuck - Keyed Type

Ø0.5 - Ø16mm  
 JT-3 Taper Mount

**On Sale**

Ex GST  
~~\$80.00~~  
**\$67.27**

Inc GST  
~~\$88.00~~  
**\$74.00**



ORDER CODE:	C290
Duty Type:	Heavy Duty
Type:	Keyed
Capacity (mm):	0.5 - 16
Mount:	JT3
Spare Chuck Key to suit:	C290A
Nett Weight (kg):	0.98



### Description

Heavy duty industrial drill chuck. The chuck is mounted by driving the taper mounted chuck onto a tapered arbor or spindle

### Features

- Robust design
- Supplied with chuck key (Re-order code: C290A)

### Includes

- Chuck key

Product Brochure For C290

Specific Features



Chuck Key

Recommended Accessories

D442A  
 2MT x JT3 Drill Chuck Arbor

D443A  
 3MT x JT3 Drill Chuck Arbor

D454A  
 4MT x JT3 Drill Chuck Arbor

D445  
 R8 x JT3 Drill Chuck Arbor -  
 7/16" UNF Threaded Shank

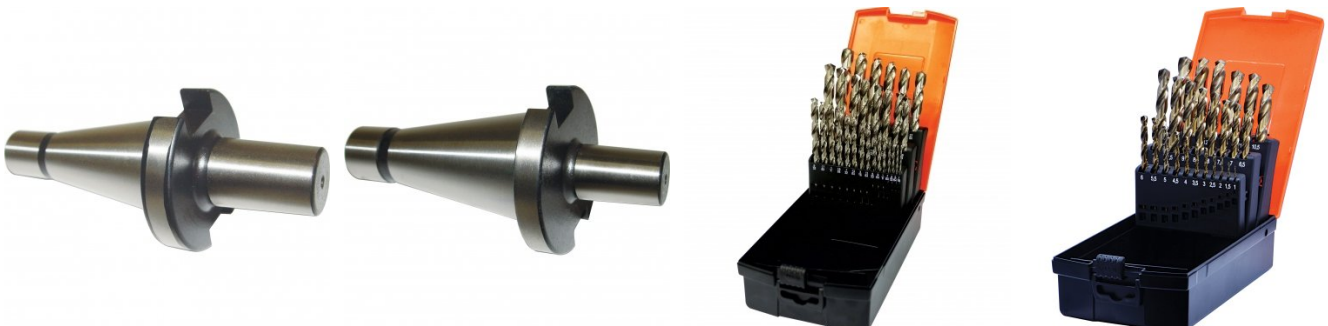


D451  
 NT30 x JT3 Drill Chuck Arbor

D448  
 NT40 x JT3 Drill Chuck Arbor -  
 M16 Threaded Shank

D1282  
 Imperial 135° Precision HSS  
 Drill Set - 29 Piece

D1272  
 Metric 135° Precision HSS Drill  
 Set - 25 Piece



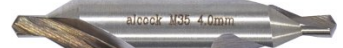
Product Brochure For C290

**D126**  
 Metric 135° Precision HSS Drill  
 Set - 170 Pieces

**D502**  
 HSS Centre Drill - No. 2

**D503**  
 HSS Centre Drill - No.3

**D504**  
 HSS Centre Drill - No. 4



**D505**  
 HSS Centre Drill - No. 5

**T019**  
 Metric HSS Hand Tap & Drill Set  
 - 29 Piece

**D107**  
 HSS Step Drill Sets

**D106**  
 Countersink Sets – 90° Three  
 Flute



**D105**  
 Deburring Countersink Sets –  
 90° Cross Hole

**C290A**  
 Drill Chuck Key

