

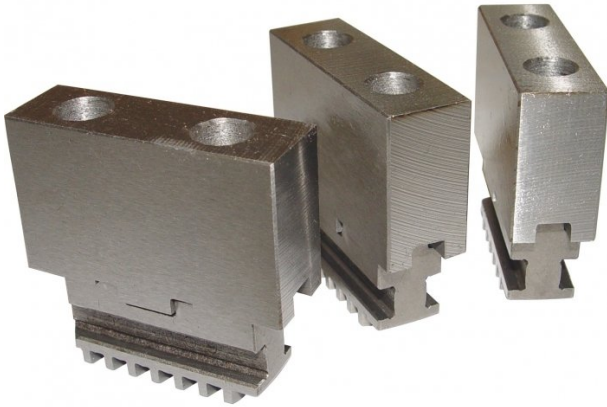
Product Brochure For C7671

Soft Jaw & Base Set

Suit 315mm 3 Jaw Lathe Chuck

| | |
|-----------------|-----------------|
| Ex GST | Inc GST |
| \$320.00 | \$352.00 |

| | |
|------------------------|-------|
| ORDER CODE: | C7671 |
| Suits Chuck Size (mm): | Ø315 |



Description

Replaceable master base jaw with soft top jaw for Toolmaster K11 chucks.
 Soft jaws can be machined and are normally used when high accuracy is required.
 They can also be machined to hold odd shapes.
HOW TO! For the best results bore the jaws as close as possible to the size of the material you are holding. This means the jaws must be clamped during the boring as close as possible to the pressure and size they will experience during use.
 A lathe boring ring can be used to apply pressure to the jaws during machining.

Features

- Hard base jaw with soft top
- Set of 3

Product Brochure For C7671

Recommended Accessories

C269

3 Jaw Self Centring Lathe
Chuck



C208

3 Jaw Self Centring Lathe
Chuck

