

## Product Brochure For D138

### Medium-Duty Bench Drill - SBD-20B

Table Tilts Left & Right To 45° & Rotates 360°  
 Ø16mm Drill Capacity with 2MT Spindle Taper



ORDER CODE:	D138
MODEL:	SBD-20B
Type - Bench / Pedestal:	Bench
Duty Type:	Medium-Duty
Drilling Diameter Capacity (mm):	Ø16
Spindle Taper (MT):	2
Spindle Travel (mm):	80
Throat Depth (mm):	170
Quill Diameter (mm):	40
Collar Diameter (mm):	55
Column Diameter (mm):	70
Spindle To Table (mm):	455
Spindle To Base (mm):	700
Table Shape:	Round
Table Size (mm):	300
Work Light:	~
Micro Switch On Pulley Guard:	Yes
Drive Belt Type:	M Section
Spindle Speed Steps (No.):	16
Spindle Speed Range (rpm):	220 - 3480
Motor Power (kW / hp):	0.75 / 1
Voltage / Amperage (V / amp):	240 / 10
Overall Height (mm):	1060
Nett Weight (kg):	55

#### Features

- Ideal for home, workshop or farm use
- Quiet belt drive system
- Quick action V-belt tensioning lever
- Drill chuck key holder mounted on left side of the machine
- Adjustable safety drilling chuck guard with flip up screen
- One piece cast iron drilling lever
- Safety micro switch on pulley guard
- Safety magnetic-type switch
- Rack & pinion table height adjustment with locking lever
- Thick walled column ensuring greater rigidity
- Table tilts left & right to 45° & rotates 360°
- Drilling depth stop setting with scale
- Slotted work table
- 16 Spindle speeds - 220, 280, 320, 410, 480, 520, 620, 650, 720, 860, 1310, 1430, 1910, 2080, 2400, 3480rpm
- 240V Aluminium fan-cooled motor

#### Includes

- 16mm keyed drill chuck and arbor
- Chuck key to suit
- Drill drift tool to remove drill chuck or taper shank drills

Product Brochure For D138

Specific Features



Left View



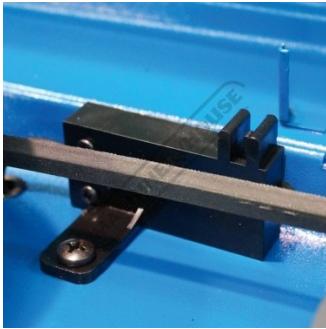
Magnetic Switch



Adjustable Safety Chuck Guard with Flip Up Screen



1 Piece Cast Iron Drilling Lever



Safety Micro Switch on Pulley Guard



Drilling Depth Stop Setting with Scale



Head Side View



Chuck Key Holder



M Section Belt Drive System



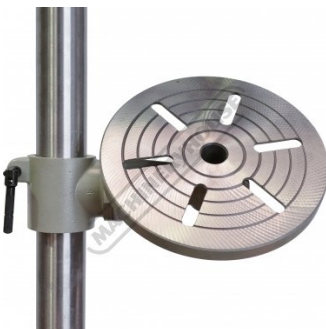
Belt Tension Lever and Lock

SPINDLE SPEEDS IN R.P.M. (r/min)			
220	280	320	410
480	520	620	650
720	950	1310	1430
1910	2080	2400	3480

Speed Chart

DRILL SIZE (mm)	MATERIAL			
	ALUMINUM	BRASS	CAST IRON	STEEL
3-6	1000-1500	1000-1500	1000-1500	1000-1500
7-10	1000-1500	1000-1500	1000-1500	1000-1500
11-15	1000-1500	1000-1500	1000-1500	1000-1500
16-20	1000-1500	1000-1500	1000-1500	1000-1500
21-25	1000-1500	1000-1500	1000-1500	1000-1500
26-30	1000-1500	1000-1500	1000-1500	1000-1500
31-35	1000-1500	1000-1500	1000-1500	1000-1500
36-40	1000-1500	1000-1500	1000-1500	1000-1500
41-45	1000-1500	1000-1500	1000-1500	1000-1500
46-50	1000-1500	1000-1500	1000-1500	1000-1500
51-55	1000-1500	1000-1500	1000-1500	1000-1500
56-60	1000-1500	1000-1500	1000-1500	1000-1500
61-65	1000-1500	1000-1500	1000-1500	1000-1500
66-70	1000-1500	1000-1500	1000-1500	1000-1500
71-75	1000-1500	1000-1500	1000-1500	1000-1500
76-80	1000-1500	1000-1500	1000-1500	1000-1500
81-85	1000-1500	1000-1500	1000-1500	1000-1500
86-90	1000-1500	1000-1500	1000-1500	1000-1500
91-95	1000-1500	1000-1500	1000-1500	1000-1500
96-100	1000-1500	1000-1500	1000-1500	1000-1500

Recommended Speed for Drill Size and Material



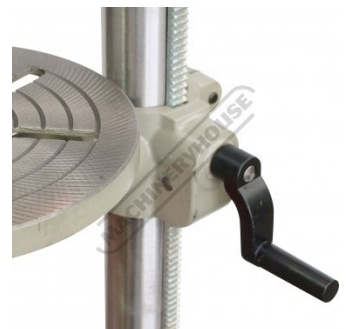
Tilting and Rotating Cast Iron Table



Tilt Table Scale



Work Table



Rack and Pinion Wind Up Table

Product Brochure For D138



Base

Recommended Accessories

**W3425**  
 Drill Press Roller Support



**C103**  
 228mm Multi-Purpose Locking  
 Clamp



**P220**  
 Gravity Feed Coolant System



**S090A**  
 Soluble Metal Cutting Fluid - 1  
 Litre



**D1272**  
 Metric 135° Precision HSS Drill  
 Set - 25 Piece



**D1282**  
 Imperial 135° Precision HSS  
 Drill Set - 29 Piece



**D126**  
 Metric 135° Precision HSS Drill  
 Set - 170 Pieces



**D1171**  
 Metric Industrial HSS Reduced  
 Shank Drill Set



Product Brochure For D138

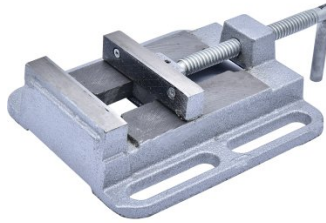
**D1181**  
 Imperial Industrial HSS Reduced  
 Shank Drill Set



**D117**  
 Metric HSS Reduced Shank Drill  
 Set



**V124**  
 Drill Press Vice



**V144**  
 Drill Press Vice



**V145**  
 Drill Press Vice



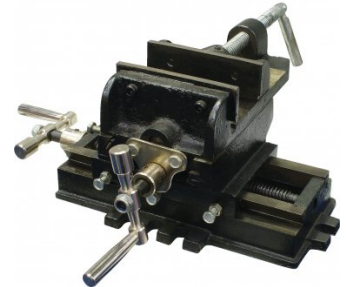
**V141**  
 Safeway Precision Drill Press  
 Vice



**V114**  
 Tilting Drill Press Vice



**V120**  
 Compound Drill Vice



**V1204**  
 Compound Drill Vice



**V1205**  
 Compound Drill Vice



**P090**  
 Pipe & Tube Notcher  
 Attachment



**C292**  
 Industrial Drill Chuck - Keyless  
 Type



Product Brochure For D138

**C294**  
 Industrial Drill Chuck - Keyless Type



**D442**  
 2MT x JT6 Drill Chuck Arbor



**D442A**  
 2MT x JT3 Drill Chuck Arbor



**O000**  
 SpillFix Universal Organic Absorbent



**O043**  
 Rust & Corrosion Preventive



**O042**  
 General Purpose Lubricant & Corrosion Inhibitor



**O040**  
 Rust & Corrosion Preventive



**O044**  
 Rust & Corrosion Preventive



**M800**  
 Rubber Mat - Anti-Fatigue



**M805**  
 Rubber Mat - Anti-Fatigue

