

Product Brochure For D144

## Medium-Duty Bench Drill - SBD-25A

Table Tilts Left & Right To 45° & Rotates  
 Ø20mm Drill Capacity with 2MT Spindle Taper



ORDER CODE:	D144
MODEL:	SBD-25A
Type - Bench / Pedestal:	Bench
Duty Type:	Heavy-Duty
Drilling Diameter Capacity (mm):	Ø20
Spindle Taper (MT):	2
Spindle Travel (mm):	80
Throat Depth (mm):	195
Quill Diameter (mm):	47
Collar Diameter (mm):	60
Column Diameter (mm):	80
Spindle To Table (mm):	455
Spindle To Base (mm):	700
Table Shape:	Square
Table Size (mm):	300
Work Light:	Yes
Micro Switch On Pulley Guard:	Yes
Drive Belt Type:	A Section
Spindle Speed Steps (No.):	16
Spindle Speed Range (rpm):	195 - 3645
Motor Power (kW / hp):	0.75 / 1
Voltage / Amperage (V / amp):	240 / 10
Overall Height (mm):	1060
Nett Weight (kg):	60



### Features

- Ideal for home, workshop or farm use
- Quiet V-belt drive system
- Quick action belt tensioning lever
- Drill chuck key holder mounted on left side of the machine
- Adjustable safety drilling chuck guard with flip up screen
- One piece cast iron drilling lever
- Safety micro switch on pulley guard
- Safety magnetic-type switch
- Rack & pinion table height adjustment with locking lever
- Thick walled column ensuring greater rigidity
- Table tilts left & right to 45° & rotates
- Drilling depth stop setting with scale
- Work light mounted underneath drill head to provide direct light onto work piece
- Slotted work table
- 16 Spindle speeds - 195, 290, 310, 420, 470, 490, 610, 680, 740, 765, 1490, 1550, 1660, 2350, 2410, 3645rpm
- 240V Aluminium fan-cooled motor

### Includes

- 16mm keyed drill chuck and arbor
- Chuck key to suit
- Drill drift tool to remove drill chuck or taper shank drills

Product Brochure For D144

Specific Features



Left View



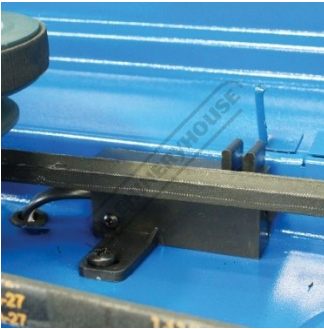
Magnetic Switch and Light Switch



Adjustable Safety Chuck Guard with Flip Up Screen



1 Piece Cast Iron Drilling Lever



Safety Micro Switch on Pulley Guard



Drilling Depth Stop Setting with Scale



Head Side View



Side View of Head



Speed Chart

RECOMMENDED SPEED FOR DRILL SIZE & MATERIAL						
SPEED RANGE (RPM)	WOOD		ALUM. ZINC BRASS		IRON STEEL	
	in	mm	in	mm	in	mm
3645	1/4	6.4	5/32	4.0	3/32	2.4
2350-2410	3/8	9.5	7/32	5.5	1/8	3.2
1550-1660	1/2	12.0	11/32	8.75	1/4	6.4
1490-1550	7/8	22.0	15/32	12.0	11/32	8.75
490-765	1-1/4	31.75	11/16	17.5	1/2	12.5
310-470	1-3/8	41.4	3/4	19.0	5/8	16.0
195-290	2	50.8	7/8	22.0	4/5	20.0

Recommended Speed for Drill Size and Material



Work Table



Tilting and Rotating Cast Iron Table



Work Light

Product Brochure For D144

**Recommended Accessories**

**W3425**  
 Drill Press Roller Support



**C103**  
 228mm Multi-Purpose Locking Clamp



**P220**  
 Gravity Feed Coolant System



**S090A**  
 Soluble Metal Cutting Fluid - 1 Litre



**D1272**  
 Metric 135° Precision HSS Drill Set - 25 Piece



**D1282**  
 Imperial 135° Precision HSS Drill Set - 29 Piece



**D126**  
 Metric 135° Precision HSS Drill Set - 170 Pieces



**D1171**  
 Metric Industrial HSS Reduced Shank Drill Set



Product Brochure For D144

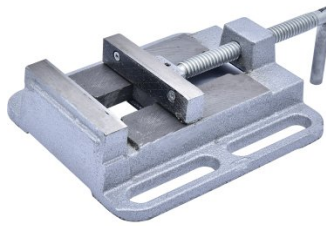
**D1181**  
 Imperial Industrial HSS Reduced  
 Shank Drill Set



**D117**  
 Metric HSS Reduced Shank Drill  
 Set



**V124**  
 Drill Press Vice



**V144**  
 Drill Press Vice



**V145**  
 Drill Press Vice



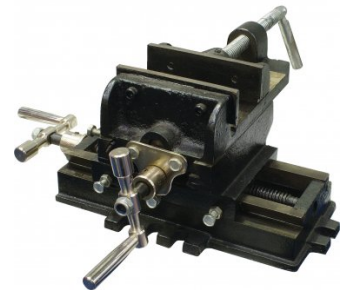
**V141**  
 Safeway Precision Drill Press  
 Vice



**V114**  
 Tilting Drill Press Vice



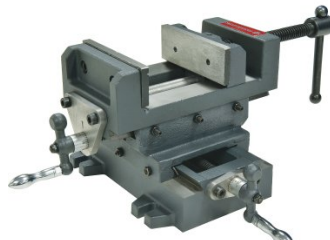
**V120**  
 Compound Drill Vice



**V1204**  
 Compound Drill Vice



**V1205**  
 Compound Drill Vice



**P090**  
 Pipe & Tube Notcher  
 Attachment



**C292**  
 Industrial Drill Chuck - Keyless  
 Type



Product Brochure For D144

**C294**  
 Industrial Drill Chuck - Keyless Type



**D442**  
 2MT x JT6 Drill Chuck Arbor



**D442A**  
 2MT x JT3 Drill Chuck Arbor



**O000**  
 SpillFix Universal Organic Absorbent



**O043**  
 Rust & Corrosion Preventive



**O042**  
 General Purpose Lubricant & Corrosion Inhibitor



**O040**  
 Rust & Corrosion Preventive



**O044**  
 Rust & Corrosion Preventive



**M800**  
 Rubber Mat - Anti-Fatigue



**M805**  
 Rubber Mat - Anti-Fatigue

