

## Product Brochure For D147

# Medium-Duty Pedestal Drill - SPD-25A

Table Tilts Left & Right To 45° & Rotates  
 Ø20mm Drill Capacity with 2MT Spindle Taper



ORDER CODE:	D147
MODEL:	SPD-25A
Type - Bench / Pedestal:	Pedestal
Duty Type:	Heavy-Duty
Drilling Diameter Capacity (mm):	Ø20
Spindle Taper (MT):	2
Spindle Travel (mm):	80
Throat Depth (mm):	195
Quill Diameter (mm):	47
Collar Diameter (mm):	60
Column Diameter (mm):	80
Spindle To Table (mm):	800
Spindle To Base (mm):	1265
Table Shape:	Square
Table Size (mm):	300
Work Light:	Yes
Micro Switch On Pulley Guard:	Yes
Drive Belt Type:	A Section
Spindle Speed Steps (No.):	16
Spindle Speed Range (rpm):	195 - 3645
Motor Power (kW / hp):	0.75 / 1
Voltage / Amperage (V / amp):	240 / 10
Overall Height (mm):	1630
Nett Weight (kg):	70



## Features

- Ideal for home, workshop or farm use
- Quiet V-belt drive system
- Quick action belt tensioning lever
- Drill chuck key holder mounted on left side of the machine
- Adjustable safety drilling chuck guard with flip up screen
- One piece cast iron drilling lever
- Safety micro switch on pulley guard
- Safety magnetic-type switch
- Rack & pinion table height adjustment with locking lever
- Thick walled column ensuring greater rigidity
- Table tilts left & right to 45° & rotates
- Drilling depth stop setting with scale
- Work light mounted underneath drill head to provide direct light onto the work piece
- Slotted work table
- 16 Spindle speeds - 195, 290, 310, 420, 470, 490, 610, 680, 740, 765, 1490, 1550, 1660, 2350, 2410, 3645rpm
- 240V Aluminium fan-cooled motor

## Includes

- 16mm keyed drill chuck and arbor
- Chuck key to suit
- Drill drift tool to remove drill chuck or taper shank drills

Product Brochure For D147

Specific Features



Left View



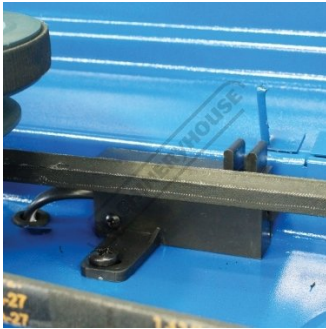
Magnetic Switch and Light Switch



Adjustable Safety Chuck Guard with Flip Up Screen



1 Piece Cast Iron Drilling Lever



Safety Micro Switch on Pulley Guard



Drilling Depth Stop Setting with Scale



Head Side View



Side View of Head



Speed Chart

RECOMMENDED SPEED FOR DRILL SIZE & MATERIAL						
SPEED RANGE (RPM)	WOOD		ALUM ZINC BRASS		IRON STEEL	
	in	mm	in	mm	in	mm
3645	1/4	6.4	5/32	4.0	3/32	2.4
2350-2410	3/8	9.5	7/32	5.5	1/8	3.2
1550-1660	1/2	12.0	11/32	8.75	1/4	6.4
1490-1550	7/8	22.0	15/32	12.0	11/32	8.75
490-765	1-1/4	31.75	11/16	17.5	1/2	12.5
310-470	1-3/8	41.4	3/4	19.0	5/8	16.0
195-290	2	50.8	7/8	22.0	4/5	20.0

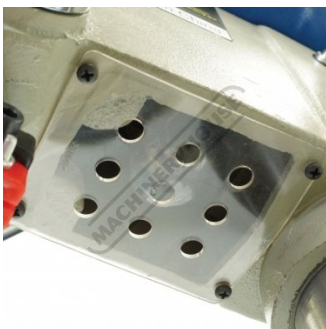
Recommended Speed for Drill Size and Material



Work Table



Tilting and Rotating Cast Iron Table



Work Light

Product Brochure For D147

**Recommended Accessories**

**W3425**  
 Drill Press Roller Support



**C103**  
 228mm Multi-Purpose Locking  
 Clamp



**P220**  
 Gravity Feed Coolant System



**S090A**  
 Soluble Metal Cutting Fluid - 1  
 Litre



**D1272**  
 Metric 135° Precision HSS Drill  
 Set - 25 Piece



**D1282**  
 Imperial 135° Precision HSS  
 Drill Set - 29 Piece



**D126**  
 Metric 135° Precision HSS Drill  
 Set - 170 Pieces



**D1171**  
 Metric Industrial HSS Reduced  
 Shank Drill Set



Product Brochure For D147

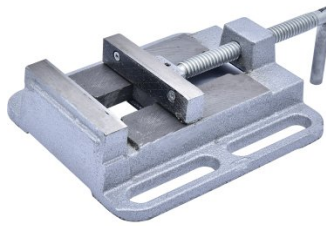
D1181  
 Imperial Industrial HSS Reduced  
 Shank Drill Set



D117  
 Metric HSS Reduced Shank Drill  
 Set



V124  
 Drill Press Vice



V144  
 Drill Press Vice



V145  
 Drill Press Vice



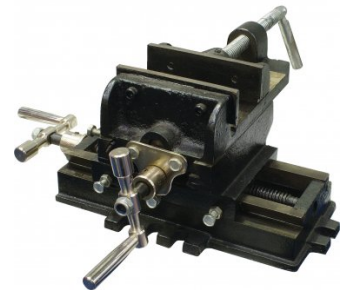
V141  
 Safeway Precision Drill Press  
 Vice



V114  
 Tilting Drill Press Vice



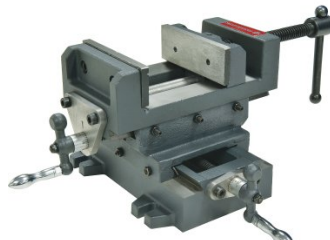
V120  
 Compound Drill Vice



V1204  
 Compound Drill Vice



V1205  
 Compound Drill Vice



P090  
 Pipe & Tube Notcher  
 Attachment



C292  
 Industrial Drill Chuck - Keyless  
 Type



Product Brochure For D147

**C294**  
 Industrial Drill Chuck - Keyless Type



**D442**  
 2MT x JT6 Drill Chuck Arbor



**D442A**  
 2MT x JT3 Drill Chuck Arbor



**O000**  
 SpillFix Universal Organic Absorbent



**O043**  
 Rust & Corrosion Preventive



**O042**  
 General Purpose Lubricant & Corrosion Inhibitor



**O040**  
 Rust & Corrosion Preventive



**O044**  
 Rust & Corrosion Preventive



**M800**  
 Rubber Mat - Anti-Fatigue



**M805**  
 Rubber Mat - Anti-Fatigue

