

Product Brochure For D154

Medium-Duty Radial Arm Drill - RPD-20

Table Rotates 360°

Ø13mm Drill Capacity with 2MT Spindle Taper



ORDER CODE:	D154
MODEL:	RPD-20
Type - Bench / Pedestal:	Pedestal
Duty Type:	Medium-Duty
Drilling Diameter Capacity (mm):	Ø13
Spindle Taper (MT):	2
Spindle Travel (mm):	80
Throat Depth (mm):	440
Quill Diameter (mm):	40
Collar Diameter (mm):	55
Column Diameter (mm):	60
Spindle To Table (mm):	700
Spindle To Base (mm):	1235
Table Shape:	Square
Table Size (mm):	290
Work Light:	~
Micro Switch On Pulley Guard:	~
Drive Belt Type:	A Section
Spindle Speed Steps (No.):	5
Spindle Speed Range (rpm):	580 - 2550
Motor Power (kW / hp):	0.562 / 0.75
Voltage / Amperage (V / amp):	240 / 10
Overall Height (mm):	1660
Nett Weight (kg):	68

Features

- Ideal for home, workshop or farm use
- Quiet V-belt drive system
- Quick action belt tensioning lever
- Drill chuck key holder mounted on left side of the machine
- Adjustable safety drilling chuck guard with flip up screen
- Safety magnetic-type switch
- Rack & pinion table height adjustment with locking lever
- Thick walled column ensuring greater rigidity
- Table rotates 360°
- Slotted square work table
- 5 Spindle speeds - 580, 800, 1520, 1800, 2550rpm
- 240V Aluminium fan-cooled motor

Includes

- 16mm keyed drill chuck and arbor
- Chuck key to suit
- Drill drift tool to remove drill chuck or taper shank drills

Product Brochure For D154

Specific Features



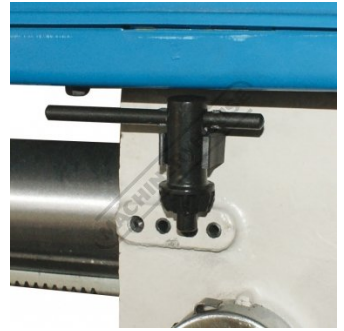
Side View



Radial Arm Horizontal Movement and Angle Setting



Magnetic Switch



Chuck Key Mounted to side of Head



Slotted Base



Slotted Square Table



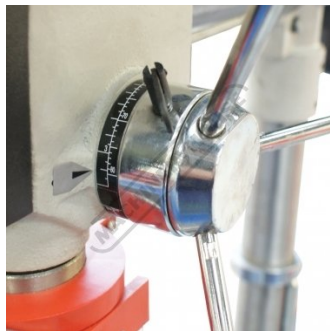
Table Height Adjustment Handle



Table Position Locks



Quill Lever



Quill Depth Setting



Adjustable Safety Chuck Guard with Flip Up Screen



Speed Chart

RECOMMENDED SPEED FOR DRILL SIZE & MATERIAL

SPEED RANGE (RPM)	WOOD		ALUMINUM ZINC BRASS		IRON STEEL	
	in	mm	in	mm	in	mm
2 5 5 0	3/8	9.5	7/32	5.6	3/32	2.4
1 8 0 0	5/8	16.0	11/32	8.75	5/32	4.0
1 5 2 0	7/8	22.0	15/32	12.0	1/4	6.4
8 0 0	1 1/4	31.75	11/16	17.5	3/8	9.5
5 8 0	1 5/8	41.4	3/4	19.0	1/2	12.5

Drill Size to Material Chart



Left Side View

Product Brochure For D154

Recommended Accessories

W3425
 Drill Press Roller Support



C103
 228mm Multi-Purpose Locking Clamp



P220
 Gravity Feed Coolant System



S090A
 Soluble Metal Cutting Fluid - 1 Litre



D1272
 Metric 135° Precision HSS Drill Set - 25 Piece



D1282
 Imperial 135° Precision HSS Drill Set - 29 Piece



D126
 Metric 135° Precision HSS Drill Set - 170 Pieces



D1171
 Metric Industrial HSS Reduced Shank Drill Set



Product Brochure For D154

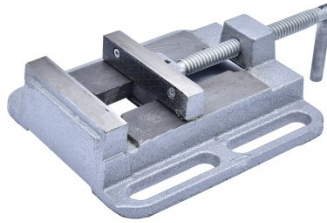
D1181
 Imperial Industrial HSS Reduced
 Shank Drill Set



D117
 Metric HSS Reduced Shank Drill
 Set



V124
 Drill Press Vice



V144
 Drill Press Vice



V145
 Drill Press Vice



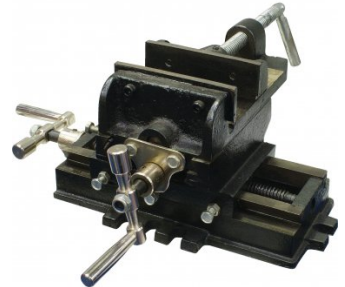
V141
 Safeway Precision Drill Press
 Vice



V114
 Tilting Drill Press Vice



V120
 Compound Drill Vice



V1204
 Compound Drill Vice



V1205
 Compound Drill Vice



P090
 Pipe & Tube Notcher
 Attachment



C292
 Industrial Drill Chuck - Keyless
 Type



Product Brochure For D154

C294
 Industrial Drill Chuck - Keyless Type



D442
 2MT x JT6 Drill Chuck Arbor



D442A
 2MT x JT3 Drill Chuck Arbor



O000
 SpillFix Universal Organic Absorbent



O043
 Rust & Corrosion Preventive



O042
 General Purpose Lubricant & Corrosion Inhibitor



O040
 Rust & Corrosion Preventive



O044
 Rust & Corrosion Preventive



M800
 Rubber Mat - Anti-Fatigue



M805
 Rubber Mat - Anti-Fatigue

