

Product Brochure For D448

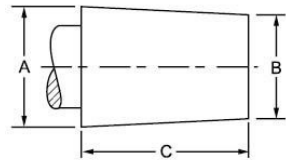
## NT40 x JT3 Drill Chuck Arbor - M16 Threaded Shank

Suits Ø16mm Drill Chucks

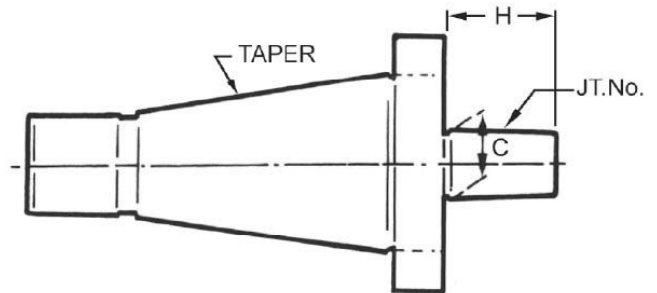
**On Sale**

<b>Ex GST</b>	<b>Inc GST</b>
<b>\$120.00</b>	<b>\$132.00</b>
<b>\$100.00</b>	<b>\$110.00</b>

ORDER CODE:	D448
Long Taper (MT):	NT40
Short Taper (JT):	JT3
Suits Chuck Size (mm):	16
Threaded Shank:	M16



JACOBS TAPER SPECIFICATIONS			
TAPER	A	B	C
JT2	0.559"	0.487"	0.875"
JT3	0.811"	0.748"	1.219"
JT6	0.676"	0.624"	1.000"



### Description

Drill chuck arbors have one end which is the taper of the machine. The most common are Morse Tapers for mounting in a drill press spindle or lathe, or NT tapers for mounting in Milling machines. The other end of the arbor is a short taper called a Jacobs Taper that is driven into the taper of the chuck body. The JT taper or Jacobs Taper is the most commonly used taper for mounting a drill chuck. The most common tapers used in Australia are JT2, JT3, JT4 & JT6

### Features

- Hardened & precision ground with M16 drawbar thread

Product Brochure For D448

---

**Recommended Accessories**

C290

Heavy Duty Drill Chuck - Keyed  
Type

C294

Industrial Drill Chuck - Keyless  
Type

