

Product Brochure For D450

## NT30 x JT6 Drill Chuck Arbor - M12 Threaded Shank

Suits Ø13mm Drill Chucks

**On Sale**

Ex GST

~~\$80.00~~

**\$68.18**

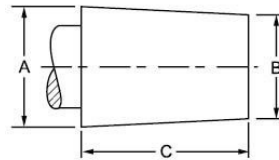
Inc GST

~~\$88.00~~

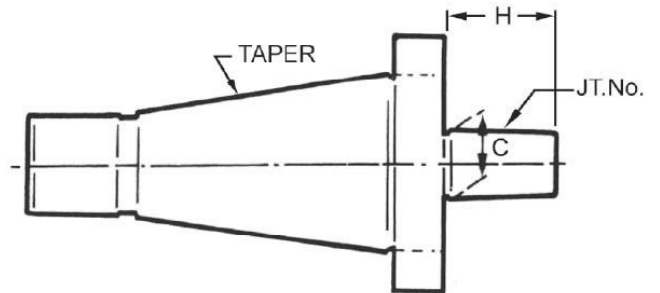
**\$75.00**



ORDER CODE:	D450
Long Taper (MT):	NT30
Short Taper (JT):	JT6
Suits Chuck Size (mm):	13
Threaded Shank:	M12



JACOBS TAPER SPECIFICATIONS			
TAPER	A	B	C
JT2	0.559"	0.487"	0.875"
JT3	0.811"	0.748"	1.219"
JT6	0.676"	0.624"	1.000"



### Description

Drill chuck arbors have one end which is the taper of the machine. The most common are Morse Tapers for mounting in a drill press spindle or lathe, or NT tapers for mounting in Milling machines. The other end of the arbor is a short taper called a Jacobs Taper that is driven into the taper of the chuck body. The JT taper or Jacobs Taper is the most commonly used taper for mounting a drill chuck. The most common tapers used in Australia are JT2, JT3, JT4 & JT6

### Features

- Hardened & precision ground with M12 drawbar thread

Product Brochure For D450

---

**Recommended Accessories**

C289

Heavy Duty Drill Chuck - Keyed  
Type

C299

Safety Lock Drill Chuck -  
Keyless Type

C292

Industrial Drill Chuck - Keyless  
Type

