

Product Brochure For D451

NT30 x JT3 Drill Chuck Arbor

Suits Ø16mm Drill Chucks

On Sale

Ex GST

~~\$80.00~~

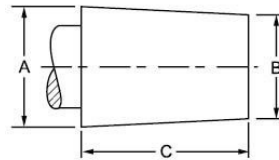
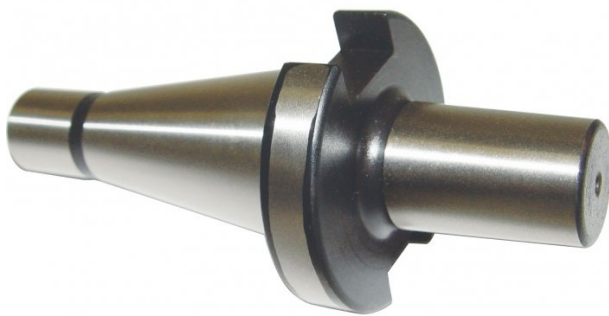
\$68.18

Inc GST

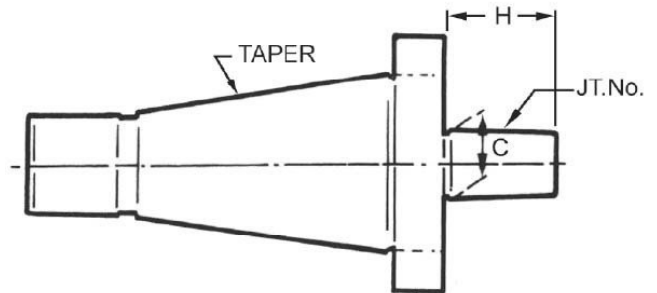
~~\$88.00~~

\$75.00

| | |
|------------------------|------|
| ORDER CODE: | D451 |
| Long Taper (MT): | NT30 |
| Short Taper (JT): | JT3 |
| Suits Chuck Size (mm): | 16 |
| Threaded Shank: | M12 |



| JACOBS TAPER SPECIFICATIONS | | | |
|-----------------------------|--------|--------|--------|
| TAPER | A | B | C |
| JT2 | 0.559" | 0.487" | 0.875" |
| JT3 | 0.811" | 0.748" | 1.219" |
| JT6 | 0.676" | 0.624" | 1.000" |



Description

Drill chuck arbors have one end which is the taper of the machine. The most common are Morse Tapers for mounting in a drill press spindle or lathe, or NT tapers for mounting in Milling machines. The other end of the arbor is a short taper called a Jacobs Taper that is driven into the taper of the chuck body. The JT taper or Jacobs Taper is the most commonly used taper for mounting a drill chuck. The most common tapers used in Australia are JT2, JT3, JT4 & JT6

Features

- Hardened & precision ground with M12 drawbar thread

Product Brochure For D451

Recommended Accessories

C290

Heavy Duty Drill Chuck - Keyed
Type

C294

Industrial Drill Chuck - Keyless
Type

