

Product Brochure For D823

Boring Sleeve - Straight - CHR 20-32

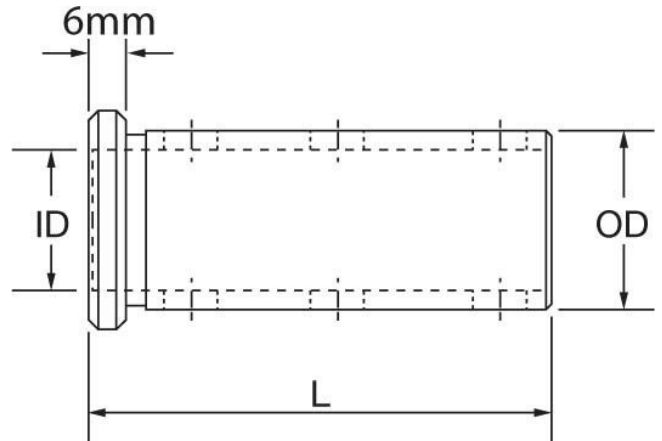
Suits CNC Lathes
 Ø32mm x Ø20mm

Ex GST
\$70.00

Inc GST
\$77.00



ORDER CODE:	D823
MODEL:	CHR 20-32
Type:	Set Screws
OD (mm):	32
ID (mm):	20mm
L (mm):	86
L1 (mm):	~



Description

Used in the turrets of CNC lathes to hold boring bars and other cutting tools.
 Universal design allows these sleeves to be fitted to all CNC machines with turrets

Features

- Precision ground
- Clamping Flat for clamping the sleeve into the turret
- Recessed grub screws to clamp the item

Product Brochure For D823

Recommended Accessories

L023

Right Hand Boring Bar

L038

Internal Threading

