

Product Brochure For D825

Boring Sleeve - Straight - CHR 32-2MT

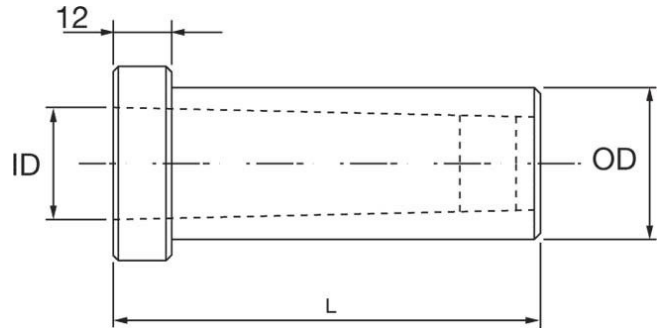
Suits CNC Lathes
 Ø32mm x MT2

Ex GST
\$80.00

Inc GST
\$88.00



ORDER CODE:	D825
MODEL:	CHR 32-2MT
Type:	Plain
OD (mm):	32
ID (mm):	2MT
L (mm):	88
L1 (mm):	~



Description

Used in the turrets of CNC lathes to hold morse taper drills.
 Universal design allows these sleeves to be fitted to all CNC machines with turrets

Features

- Precision ground inside and out
- Clamping Flat for clamping the sleeve into the turret
- Drive slot for the tang of the taper shank drill

Product Brochure For D825

Recommended Accessories

D420

Drill Sleeve - Morse Taper

