

Product Brochure For D8294

Boring Sleeve - Straight - CHR 40-4MT

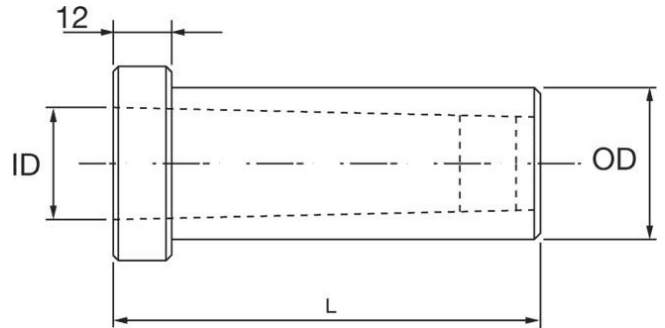
Suits CNC Lathes
 Ø40mm x 4MT

Ex GST
 \$90.00

Inc GST
 \$99.00



ORDER CODE:	D8294
MODEL:	CHR 40-4MT
Type:	Plain
OD (mm):	40
ID (mm):	4MT
L (mm):	88
L1 (mm):	~



Description

Used in the turrets of CNC lathes to hold morse taper drills.
 Universal design allows these sleeves to be fitted to all CNC machines with turrets

Features

- Precision ground inside and out
- Clamping Flat for clamping the sleeve into the turret
- Drive slot for the tang of the taper shank drill

Product Brochure For D8294

Recommended Accessories

D424

Drill Sleeve - Morse Taper

