

Product Brochure For K034

## Industrial Work Bench Package Deal - IWB-40P4

1800 x 750 x 1725mm  
 1000kg Table Top Load Capacity



### On Sale - Package Deal

Ex GST	Inc GST
\$1,590.00	\$1,749.00
\$1,540.00	\$1,694.00

### Package Contents - SAVE \$253.00 (Inc)

1 x A420 - Industrial Work Bench IWB-40	\$429.00
1 x A426 - Industrial Backing Panel - Bench Mount IBP-ST	\$297.00
4 x A440 - Hook - Single Prong SPH-75	\$3.30
4 x A442 - Hook - Double Prong DPH-75	\$4.40
1 x A444 - Plier Holder - Triple Prong TPH-150	\$6.60
1 x A446 - Holder - Spanner SH-135	\$12.10
1 x A448 - Holder - Screwdriver SDH-390	\$14.30
8 x A430 - Plastic Bucket BK-110	\$6.60
8 x A432 - Plastic Bucket BK-140	\$8.80
6 x A434 - Plastic Bucket BK-220	\$16.50
1 x T764 - 6 Drawer - Industrial Tooling Cabinet TC-750	\$715.00
1 x A422 - 2 Drawer - Industrial Under Bench Tooling Cabinet	\$220.00

**Normal Price (Inc): \$1,947.00**

ORDER CODE:	K034
MODEL:	IWB-40P4
Bench Material (Type):	Steel with Laminated Top & Package Deal
Table Top Load Capacity (kg):	1000
Number of Drawers (No.):	8
Table Dimensions (L x W x H) (mm):	1800 x 750 x 900
Nett Weight (kg):	233

### Description

Heavy Duty steel construction. Great heavy duty work bench for the workshop or garage.

The IWB-40 Industrial-duty work bench has a huge load capacity of 1000kg (1 Tonne). Constructed from heavy duty powder coated steel the multi-functional commercial frame provides maximum rigidity for the most demanding industrial applications. Finished with a rounded PVC edge the 41mm medium density laminated bench top will withstand heavy loads.

The louvred backing panel which incorporates a fixed top and bottom shelf is a great addition. A complete range of tool hooks, hangers and storage buckets are also available making storing and locating your tools much easier.

To complete the package a 6 drawer & 2 drawer tooling cabinets designed to fit underneath the bench is another addition. Featuring a range of plastic boxes in the top drawer it would be ideal for the storage of small parts such as screws etc. The lower drawers incorporate movable steel dividers which allow you to configure the space to suit your application

This great work bench package solution shown also includes a range of plastic storage buckets, hooks, holders and a sturdy stool.

### Features

- IWB-40 Work Bench:
  - Heavy duty steel fabricated frame with powder coated finish for maximum rigidity
  - Top Surface is 2mm high density laminate over 41mm thick medium density chipboard with bull nosed hard PVC edge
  - Easy to use screw out adjustable feet
  - High quality laminated medium density chipboard with a 1000kg load capacity, rounded PVC edge and also resistant to alkali and oil
- IBP-ST Backing Panel:
  - Backing panels can be assembled to suit your requirements, either top or bottom positions
  - Square holes suits optional hooks & holders
  - Louvre slots to suit optional buckets
  - Bottom & top tray shelves - for additional storage
  - 3 Vertical supports - with adjustable clamps to mount to work bench
- TC-750 Industrial Tooling Cabinet:
  - Heavy duty tooling cabinets, ideal for industrial applications and serious workshops
  - The sliding drawers are a welded strengthened single rail design coupled with high quality mechanical bearings for long lasting smooth operation

## Product Brochure For K034

- Each drawer is rated at 100kg load capacity with 97% drawer access
  - Single Key lock design for safe storage. Each drawer has a mechanical safety lock which allows one drawer to be opened at a time, preventing the cabinet to tip over
  - All top drawers include a series of different size plastic boxes for those small items
  - All other drawers come with adjustable steel dividers. The wood top with frame is a great option to rest tooling and precious parts on top of the cabinet
  - Top Drawer - 75mm high with moveable plastic division boxes
  - Drawer 2 - 75mm high with moveable steel dividers 3x3 layout
  - Drawer 3 & 4 - 100mm high with moveable steel dividers 3x3 layout
  - Drawer 5 & 6 - 150mm high with moveable steel dividers 3x3 layout
- HC-2 - Industrial Under Bench Tooling Cabinet
  - The HC-2 cabinet is designed mount under the IWB-40 work bench by using the mounting bracket supplied or it can be just screwed to your existing work bench
  - Ideal for garages or workshops
  - Heavy duty full extension sliding ball bearing drawers runners with 97% drawer access
  - Key lockable drawers with a load capacity of 40kg each
  - Drawer 1 - 100mm high, load capacity of 40kg and includes steel dividers
  - Drawer 2 - 100mm high, load capacity of 40kg and includes steel dividers
- Includes:
  - 4 x A440-SPH-75 Hook - Single Prong
  - 4 x A442-DPH-75 Hook - Double Prong
  - 1 x A444-TPH-150 Plier Holder - Triple Prong
  - 1 x A446-SH-135 Holder - Spanner
  - 1 x A448-SDH-390 Holder - Screwdriver
  - 8 x A430-BK-110 Plastic Bucket
  - 8 x A432-BK-140 Plastic Bucket
  - 6 x A434-BK-220 Plastic Bucket
  - Please Note: Table top load capacity is calculated on even weight distribution over entire table top area.

### Specific Features



Backing Panel



Pegboard Closeup



Top Tray



Bottom Tray

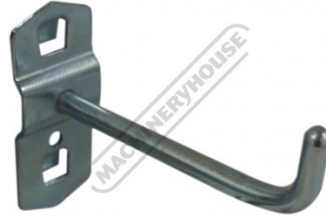
Product Brochure For K034



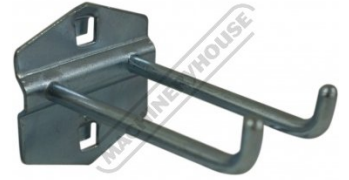
Clamp



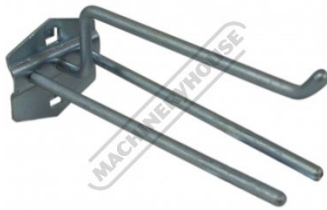
Shown Clamped to Optoanl Table



Single Hook Prong



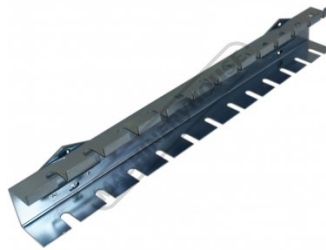
Double Hook Prong



Plier Holder Triple Hook



Spanner Holder



Screwdriver Holder



Small Plastic Bucket



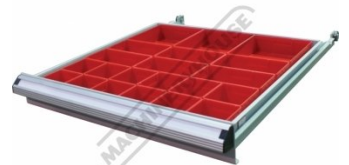
Medium Plastic Bucket



Large Plastic Bucket



6 Drawer Tooling Cabinet



Top Drawer with Plastic Buckets



Drawers with Steel Dividers



Heavy Duty Drawers



Drawer Ball Bearing Arms



Drawer Locking Mechanism

Product Brochure For K034



Drawer Lock Bracket



Drawer in Lock Position



Drawer in Unlock Position



Heavy Duty Drawer Slides



Drawers with Safety Lock



Key Lock



2 Drawer Under Bench Mount



Front View



Drawers With Steel Dividers



Ball Bearing Slides



Connecting Rails



Steel leg bracing



Adjustable Feet



Rounded-bull nosed hard PVC edge



Front View



Shown with Extra Optional Accessories

Product Brochure For K034

**Recommended Accessories**

**A420**  
Industrial Work Bench



**A426**  
Industrial Backing Panel - Bench Mount



**A422**  
2 Drawer - Industrial Under Bench Tooling Cabinet



**T764**  
6 Drawer - Industrial Tooling Cabinet



**A430**  
Plastic Bucket



**A432**  
Plastic Bucket



**A434**  
Plastic Bucket



**A436**  
Plastic Bucket



Product Brochure For K034

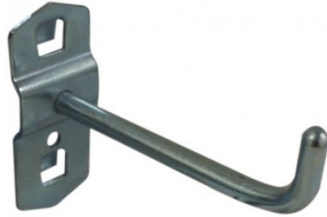
A439

Hook - Single Prong



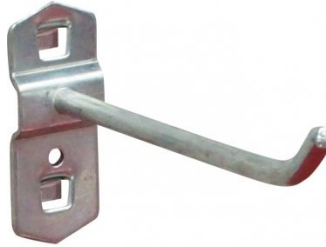
A440

Hook - Single Prong



A4401

Hook - Single Prong



A441

Hook - Double Prong



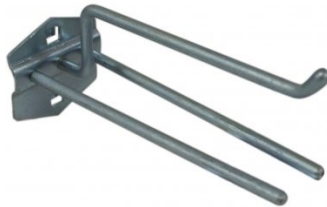
A442

Hook - Double Prong



A444

Plier Holder - Triple Prong



A4492

Hook - U Shape Holder



A449

Hook - U Shape Holder



A4496

Round Tool Holder - Loop



A446

Holder - Spanner



A448

Holder - Screwdriver



K029

Industrial Work Bench Package Deal



Product Brochure For K034

**K030**  
 Industrial Work Bench Package Deal



**K031**  
 Industrial Work Bench Package Deal



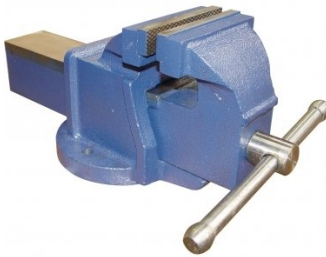
**K035**  
 Industrial Work Bench Package Deal



**A359**  
 Pneumatic Stool



**V088**  
 100mm Cast Iron Bench Vice



**V081**  
 100mm Forge Steel Utility Bench Vice with Anvil & Pipe Jaws



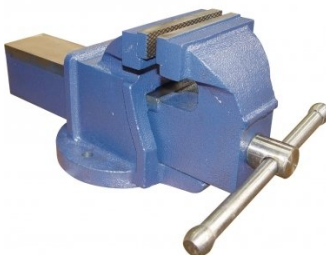
**V069**  
 100mm Steel Offset Fabricated Bench Vice



**V079**  
 100mm Cast Iron Offset Bench Vice



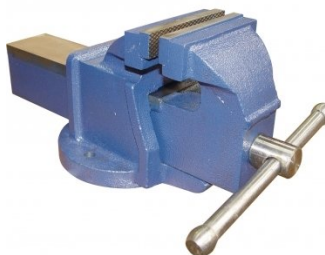
**V089**  
 127mm Cast Iron Bench Vice



**V0815**  
 125mm Forge Steel Utility Bench Vice with Anvil & Pipe Jaws



**V090**  
 152mm Cast Iron Bench Vice



**V067**  
 152mm Steel Offset Fabricated Bench Vice



Product Brochure For K034

V082

150mm Forge Steel Utility Bench Vice with Anvil & Pipe Jaws



V070

150mm Steel Offset Fabricated Bench Vice



V080

150mm Cast Iron Offset Bench Vice



V071

200mm Steel Offset Fabricated Bench Vice



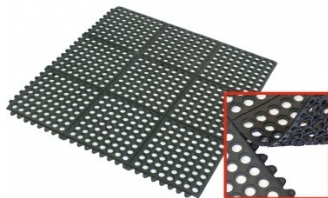
M800

Rubber Mat - Anti-Fatigue



M805

Rubber Mat - Anti-Fatigue



G160

Industrial Bench Grinder



G160A

Industrial Bench Grinder



G157

Industrial Bench Grinder with Multitool Linisher Attachment



G156

Industrial Bench Grinder with Linisher



G161

Industrial Bench Grinder



D590

Medium-Duty Bench Drill - Belt Drive



Product Brochure For K034

**H820**  
 Metric Hex Key Set with T-Bar Handle



**H821**  
 Imperial Hex Key Set with T-Bar Handle



**H822**  
 Torx® Key Set with T-Bar Handle



**D1272**  
 Metric 135° Precision HSS Drill Set - 25 Piece



**D1282**  
 Imperial 135° Precision HSS Drill Set - 29 Piece



**D1285**  
 Metric 135° Precision HSS Drill Set - 51 Piece



**D1071**  
 HSS Sheet Metal Step Drill Set - 3 Piece



**D1051**  
 HSS Countersink Set (90° Cross Hole Type) - 4 Piece



**D1061**  
 HSS Countersink Set (90° 3 Flute Type) - 6 Piece



**D508**  
 HSS Industrial Centre Drill Set - 5Pcs



**D070**  
 Drill Sharpener



**H880**  
 Dead Blow, Nylon Face Hammer



Product Brochure For K034

**H870**  
 Soft Face Hammer



**H875**  
 Soft Face Hammer - 5 piece



**H885**  
 Auto Panel Restoration Kit - DIY



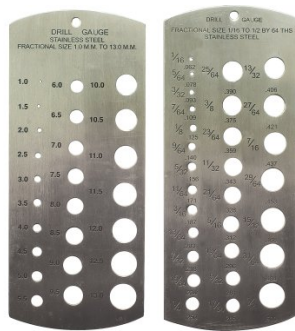
**H886**  
 Auto Panel Restoration Kit - Professional



**H887**  
 Auto Panel Restoration Kit - Master



**M988**  
 Metric & Imperial Drill Gauge



**Q616**  
 Feeler Gauge Set



**T012**  
 Metric Alloy Steel Tap & Die Set - 32 Piece



**T013**  
 Metric HSS Tap & Die Set - 32 Piece



**T014**  
 Metric Alloy Steel Tap & Die Set - 45 Piece



**T015**  
 Imperial Alloy Steel Tap & Die Set - 45 Piece



**T016**  
 Metric HSS Tap & Die Set - 45 Piece



Product Brochure For K034

**T870**  
Screw Extractor Set - 10 piece



**T119**  
Metric Thread Restorer File



**T120**  
Imperial Thread Restorer File



**T100**  
Metric Thread Repair Kit - 130 Piece



**T116**  
Imperial Thread Restorer Tap & Die Kit - 26 Piece Set



**T115**  
Metric Thread Restorer Tap & Die Kit - 15 Piece



**T117**  
Metric, UNC, UNF Thread Restorer Tap & Die Kit - 48 Piece



**D108**  
Metric Carbide Tipped Hole Saw Set



**D102**  
Metric HSS Hole Saw Set



**F100**  
Engineers Files, 5 Piece Set - Second Cut



**F120**  
Engineers File, Flat - Coarse Cut



**F121**  
Engineers File, Flat - Second Cut



Product Brochure For K034

F122

Engineers File, Flat - Smooth Cut



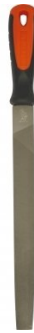
F124

Engineers File, Half Round - Coarse Cut



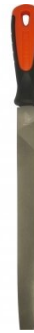
F125

Engineers File, Half Round - Second Cut



F126

Engineers File, Half Round - Smooth Cut



F127

Engineers File, Round - Coarse Cut



F128

Engineers File, Round - Second Cut



F129

Engineers File, Round - Smooth Cut



F160

Slapping File - Second Cut



F150

Flexible Body File Holder



F155

Flexible Body File



F156

Flexible Body File



P112

Hole Punch Set



Product Brochure For K034

**S203**  
 180° Straight Edge/Seaming Plier



**S205**  
 90° Edge/Seaming Plier



**S200**  
 Joggler & Punch Plier



**P368**  
 Automatic Centre Punch



**P367**  
 Centre Punch Set - 3 Piece



**P365**  
 Pin Punch Set - 6 Piece



**P363**  
 Cold Chisel Set - 3 Piece



**P364**  
 Punch & Cold Chisel Set - 14 Piece



**N001**  
 Nut & Blind Riveter Set - 130 Piece



**P350**  
 Letter Punches



**P351**  
 Number Punches



**P354**  
 Letter Punches



Product Brochure For K034

**P355**  
 Number Punches



**W103**  
 Engineers Chalk Marker- 50 Splits



**W104D**  
 White Liquid Paint Marker - Valve Action



**W104B**  
 Silver Streak - Welders Pencil



**W104A**  
 Orange Trades Marker Refills - All Purpose



**W104**  
 Trades Marker - All Purpose



**W104G**  
 Silver Streak Refills - Round Metal Marker



**W104C**  
 Silver Streak - Round Metal Marker



**D063**  
 Sheet Metal Deburring Tool



**D060**  
 Deburring Tool - Telescopic Shaft



**D065**  
 Universal Deburring Tool Set - 23 Piece



**D068**  
 Pipe/Tube Deburring Tool - Internal / External



Product Brochure For K034

**B900**

Carbide Burr Double Cut Set - Short Series



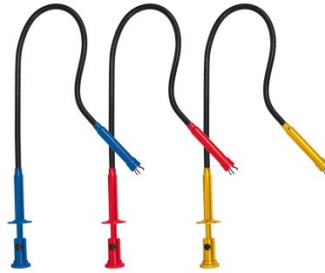
**B905**

Carbide Burr Double Cut Set - Long Series



**M0010**

Pick Up Tool with Magnetic Head & 1 x LED Light



**M0009**

Magnetic Pick Up Tool & Inspection Mirror Set



**L300**

Magnetic Swarf Remover



**P020**

Hydraulic Chassis Punch Set



**W112**

Micro Welding Steel Clamp Set



**W113**

Butt Welding Aluminium & Steel Clamp Set



**S077**

Drilling, Tapping & Cutting Tool Lubricant Spray - 400g



**S075**

Cutting Tool Lubricant Paste - 200g



**O043**

Rust & Corrosion Preventive



**O042**

General Purpose Lubricant & Corrosion Inhibitor



Product Brochure For K034

O040  
Rust & Corrosion Preventive



O044  
Rust & Corrosion Preventive



P030  
Bush Driver Set - 17 piece



P031  
Bearing Race & Seal Driver Set - 10 piece



P005  
Ratcheting Gear Puller Set



P013  
Puller Set with Slide Hammer



P011  
Hydraulic Gear Puller Kit



A037  
Air Tool Oil



G076  
Top Up Pump



G077  
Oil Transfer Pump



G065  
Suction Gun - Oil Transfer



G070  
Grease Gun



Product Brochure For K034

G072  
 Grease Gun



G063  
 Grease Gun



G074  
 Air Operated Grease Gun



G066  
 Air Operated Power Pistol - Grease Gun



G060  
 Grease Gun



G067  
 Lithium-ion Battery Operated - Grease Gun



G057  
 Super Blue Complex Grease Cartridge



O002  
 Superdrdraulic ISO 46 Hi Temp Hydraulic Oil

