

Product Brochure For K146

Opti-Turn Lathe & Mill Drill Combination Package Deal - TU-2506V-16M

250 x 550mm - (Limited Stock Only Available In Perth)

Included BF-16AV Mill Head



OPTIMUM



ORDER CODE:	K146
MODEL:	TU-2506V-16M
KIT Includes:	TU-2506V & BF-16AV
Lathe Specifications:	LATHE SPECIFICATIONS
Tool Height To Suit (mm):	12
Distance Between Centres (mm):	550
Swing Over Bed (mm):	250
Swing Over Cross Slide (mm):	150
Centre Height (mm):	125
Spindle Bore (mm):	26
Spindle Nose Type:	Fixed
Bed Width (mm):	135
Headstock Taper (MT):	4
Tailstock Taper (MT):	2
Cross Slide Travel (mm):	110
Compound Slide Travel (mm):	70
Leadscrew:	Metric
Longitudinal Feed (Z-Axis) (mm/rev):	0.07 - 0.4
Cross Feed (X-Axis):	~
Metric Thread Range (mm):	0.2 - 3.5
Imperial Thread Range (TPI):	8 - 56
Three Jaw Chuck Size (mm):	125
Four Jaw Chuck Size:	Optional
Spindle Speeds (No. / rpm):	Variable (150 - 2500)
Motor Power - Lathe (kW / hp):	1.2 / 1.6
Voltage / Amperage - Lathe (V / amp):	240 / 10
Mill Specifications:	MILL SPECIFICATIONS
Spindle Taper (MT):	3
Column Type:	Dovetail
Swivel Head (Left ~ Right) (± Deg):	±90
Vertical Travel (Z-Axis) (mm):	210
Drilling Capacity (mm):	16
End Milling Capacity (mm):	20
Face Milling Capacity (mm):	63
Spindle Speeds Vertical (No. / rpm):	Variable (100-3000)
Motor Power - Mill (kW / hp):	0.5 / 0.66
Voltage / Amperage - Mill (V / amp):	240 / 10
Nett Weight (kg):	225

Description

TU-2506V-16M Combination Lathe & Mill-Drill consist of TU-2506V bench lathe & BF-16AV mill head

A variable speed Lathe & Mill-Drill combination machine of very modern design with many convenient facilities, ideal for the enthusiastic model engineer or with limited space in the work shop. A very rigid cast iron bed with ground slide-ways gives a high level of precision.

Featuring as standard on the lathe is a longitudinal power feed, quick lock tailstock, both metric and imperial thread cutting capability and also including a milling / drilling head to turn this machine into a very versatile & capable small all round machine. This machine is suitable for bench mounting, but recommended the addition of the optional stand so not to take up valuable bench space. We are sure this machine will please the model engineer.

Features

- LATHE: TU-2506V
- Ideal for small workshops
- Electronic infinitely variable speed 150-2500rpm
- Easy to read digital readout speed display
- Ribbed prism bed made of grey cast iron
- Inductively hardened and ground bed guideways

Product Brochure For K146

- Spindle nose accuracy 0.009mm
 - 3 Jaw chuck running accuracy 0.04mm
 - Forward & reverse spindle direction switch
 - Automatic longitudinal feed
 - Metric & Imperial thread cutting
 - Enclosed feed and threading gearbox
- MILL: BF-16AV
 - Electronic infinitely variable speed (100-3000rpm)
 - Tilting head to $\pm 90^\circ$ from vertical
 - 3MT spindle taper
 - Adjustable dovetail slideway on Z-Axis
 - Heavy duty cast iron body and base for better stability
 - 2-speed gearbox (high/low) drive system to maximise torque
 - IP54 with low-voltage release switch
 - Scale collars for all axis are adjustable
 - Adjustable drill length stop
 - Metric dial graduations
- Note: The lathe rear splash tray is required to be removed to fit Mill Head Attachment.

Includes

- LATHE: TU-2506V
 - 125mm 3-jaw chuck
 - Change gears for metric & Imperial thread cutting
 - Chuck guard
 - Toolpost guard
 - Dead Centre
 - 3-jaw chuck with reversible jaws
 - Swarf tray
 - Rear splash guard
- MILL: BF-16AV
 - 3MT x JT6 drill chuck arbor
 - Safety cutter guard
 - Bracket kit for optional digital readout.

Specific Features



Front View



Lathe Toolpost Removed For Milling Application



Left View Without Toolpost



TU 2506V Front View with Optional Stand



Stand Sold Separately

TU 2506V Lathe Shown with Optional Stand



TU 2506V Left View with Optional Stand



TU 2506V Safety Chuck Guard



TU 2506V Lathe Controls

Product Brochure For K146



TU 2506V Digital Speed Readout

INDICATOR TABLE		
PITCH mm	P=3mm Mn=1	
	28T	30T
0.5, 0.7		
1, 1.75	2, 4, 6, 8	
0.8	8	
1.25		4, 8
2.5, 3		
1.5	2, 4, 6, 8	2, 4, 6, 8
2		8

TU 2506V Indicator Table



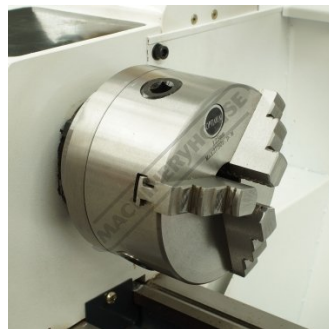
TU 2506V Spindle & Gearbox Controls



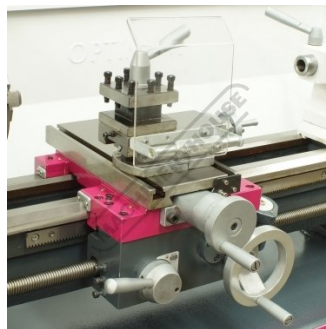
TU 2506V Feed and Thread Gearbox



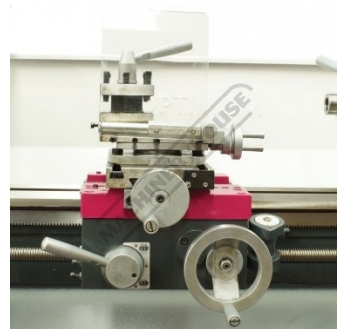
TU 2506V Variable Speed Dial



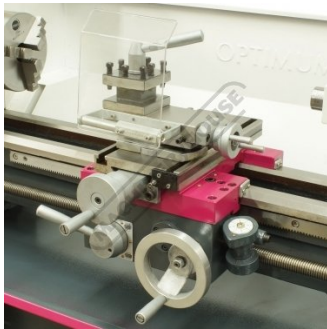
TU 2506V 3 Jaw Chuck



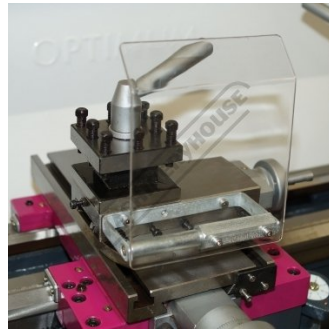
TU 2506V Saddle Left View



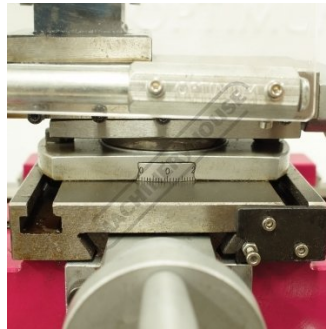
TU 2506V Saddle Front View



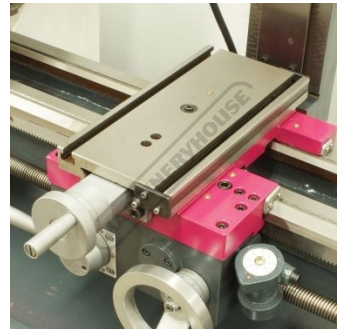
TU 2506V Saddle Right View



TU 2506V Toolpost and Safety Guard



TU 2506V Compound Slide



TU 2506V Mill Table



TU 2506V Cross Feed Hand Wheel



TU 2506V Saddle Hand Wheel



TU 2506V Compound Slide Hand Wheel



TU 2506V Thread Chasing Dial

Product Brochure For K146



TU 2506V Feed Engagement Lever



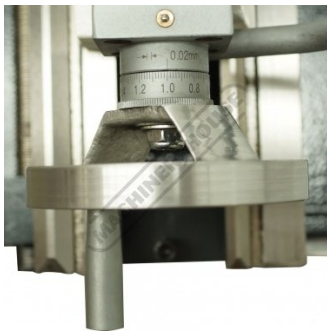
TU 2506V Tailstock



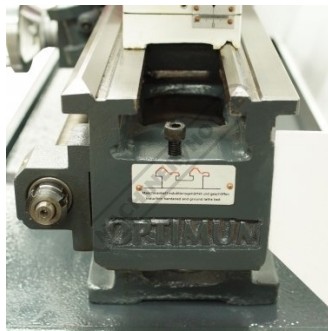
TU 2506V Tailstock Quill



TU 2506V Tailstock Adjustment



TU 2506V Tailstock Quill Hand Wheel



TU 2506V Induction Hardened and Ground Bed



TU 2506V Lathe Parts



BF 16AV Mill Head



BF 16AV Control Panel with Variable Spindle Speed



BF 16AV Safety Guard



BF 16AV Quill Handle



BF 16AV High Low Geared Drive



BF 16AV Z-Axis Scale



BF 16AV Z-Axis Hand Wheel



BF 16AV Quill Lock



BF 16AV Swivel Head Lock

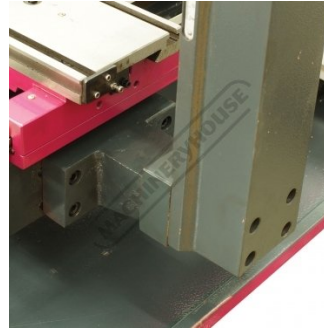
Product Brochure For K146



BF 16AV Drawbar



BF 16AV Dovetail Column



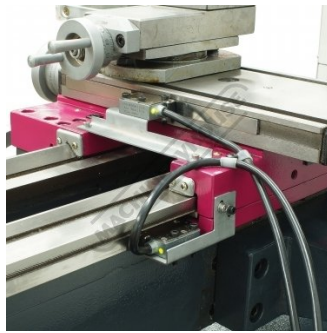
BF 16AV Mill Attachment Bracket



Rear View



Shown with Optional Stand and DRO System



Shown with Optional 2 Axis DRO Scales



Shown with Optional Mill Z Axis DRO Scale

Recommended Accessories

L690
 Lathe Stand



D695
 3-Axis Optimum Digital Readout Counter - 1µm



D694
 1500mm Optimum Magnetic Digital Readout Scale



L0099
 Lathe Turning Tool Kit - 7 piece Insert Type



Product Brochure For K146

L450
 Lathe Turning Tool Kit - 3 piece
 Insert Type



L456
 Lathe Threading Tool Kit - Insert
 Type



L464
 Professional Lathe Parting Tool
 Kit - Insert Type



L073
 Parting Tool Holder - Suits 1/2"
 HSS Tool Bit



L0007
 Part Off Blade - High Speed
 Steel Bit



C0945
 Clamp Kit 58 piece - Workshop
 Series



D442A
 2MT x JT3 Drill Chuck Arbor



D1272
 Metric 135° Precision HSS Drill
 Set - 25 Piece



D1282
 Imperial 135° Precision HSS
 Drill Set - 29 Piece



D126
 Metric 135° Precision HSS Drill
 Set - 170 Pieces



C050
 2MT Live Centre



L076
 Knurling Tool Holder Kit

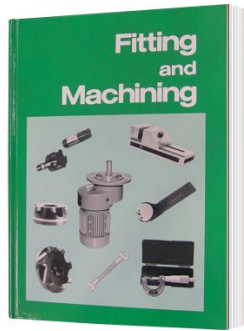


Product Brochure For K146

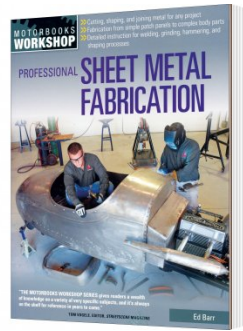
P235
 Coolant Pump & Tank



L341
 Fitting and Machining Technical Book



L3455
 Professional Sheet Metal Fabrication Book



L280
 Quick Change Toolpost



L280A
 Quick Change Toolpost Holder - Std



L277
 Vertical Mill Slide



M9991
 Magnetic Floor Sweeper



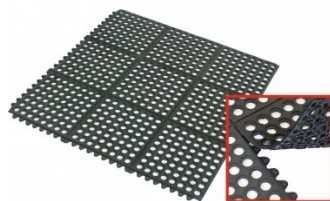
L300
 Magnetic Swarf Remover



M800
 Rubber Mat - Anti-Fatigue



M805
 Rubber Mat - Anti-Fatigue



S090A
 Soluble Metal Cutting Fluid - 1 Litre



S090
 Soluble Metal Cutting Fluid - 5 Litre



Product Brochure For K146

S076

Cutting Tool Lubricant Fluid - 500ml



S077

Drilling, Tapping & Cutting Tool Lubricant Spray - 400g



S075

Cutting Tool Lubricant Paste - 200g



S074

Cutting Tool Lubricant Paste - 500g



D720C

200mm Easson Digital Readout Scale



D728

600mm Easson Digital Readout Scale



C926

Collet & Chuck Set - 20 Piece



C922B

Collet & Chuck Set - 8 Piece



C090

Clamp Kit 58 piece - Workshop Series



C0948

Mini Clamp Kit 10 piece - Workshop Series



M3301

Metric HSS Slot Drill & End Mill Set - 10 Piece



M3321

Imperial HSS Slot Drill & End Mill Set - 10 Piece



Product Brochure For K146

M3280
 13mm HSS End Mill Long Series



M182
 Precision Boring Head Kit



M192
 Boring Head Shank



M180
 Boring Bar Set - 9 piece



M250
 Parallel Set - 8 Piece



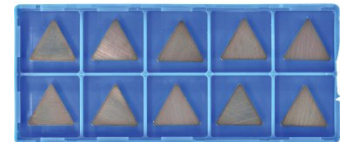
M530
 Universal Milling Kit - 4 Piece



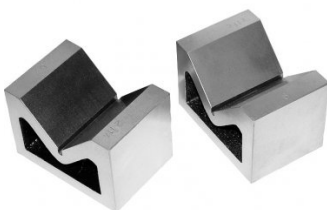
M528
 Face Mill 90° - Positive Rake



L066
 KYOCERA Carbide Inserts - Milling



V004
 Cast Iron Vee Block



R001
 Rotary Table



R0014
 Tilting Rotary Table



O000
 SpillFix Universal Organic Absorbent



Product Brochure For K146

O043
 Rust & Corrosion Preventive



O042
 General Purpose Lubricant & Corrosion Inhibitor



O040
 Rust & Corrosion Preventive



O044
 Rust & Corrosion Preventive

