

Product Brochure For K234

Industrial Steel Shelving Plus 2 Drawer Unit Package Deal - RSS-4WS

364kg Shelf Load Capacity
 1955 x 610 x 1830mm



On Sale - Package Deal

Ex GST	Inc GST
\$350.00	\$385.00
\$318.18	\$350.00

Package Contents - SAVE \$68.00 (Inc)

1 x S014 - Industrial Steel Shelving RSS-4WS	\$319.00
1 x S014D - 2 x Drawer System - Suits Industrial Steel Shelving RSS-2D	\$99.00
Normal Price (Inc):	\$418.00

ORDER CODE:	K234
MODEL:	RSS-4WS + RSS-2D Package
Type:	Industrial Steel Shelving + & 2 Drawer Unit
Drawer Load Capacity (kg):	30
Shelf Load Capacity (kg):	364
Total Combined Load Capacity (kg):	~
Parts Bin Load Capacity Each (kg):	~
Buckets / Bins Total Quantity (No.):	~
Buckets / Bins Dividers Quantity (No.):	~
Maximum Total Load Capacity (kg):	~
Buckets / Bins A: Quantity / Size (mm):	~
Buckets / Bins B: Quantity / Size (mm):	~
Buckets / Bins C: Quantity / Size (mm):	~
Buckets / Bins D: Quantity / Size (mm):	~
Dimensions (W x D x H) (mm):	1955 x 610 x 1830
Nett Weight (kg):	66.5

Description

Industrial steel shelving which is supplied in bays 1955mm (L) x 610mm (W) x 1830mm (H) with a silver corrosive resistant powder coated finish.

Each bay consists of four levels with wire mesh inserts, each shelf has a capacity of 364kg. The vertical posts have provision to adapt an optional racking extensions (S014A) to double the storage. The shelf rails are secured in position and locked in via a wedge system. Simply very easy to assemble without the use of any tools.

Features

- RSS-4WS - Industrial Steel Shelving - (S014)
 - 364kg capacity per shelf
 - Industrial 4 shelves with reinforced steel wire grid pattern mesh
 - Adjustable shelf height position with interlocking tabs
 - Silver corrosive resistant powder coated finish
 - Vertical posts have double sided punched holes to connect optional extension bay
 - Vertical posts are 64 x 38 x 1.6mm heavy duty C-section
 - Cross member supports for wire mesh are 70 x 18 x 1.6mm heavy duty C-section
 - Strengthening side supports are 40 x 18 x 1.4mm C-section
 - 1955 x 610 x 1830mm (LxWxH) assembled dimensions
-
- RSS-2D - 2 x Drawer System - Suits Industrial Steel Shelving - (S014D)
 - 2 x 412 x 540 x 110mm drawers - (WxDxH)
 - 880mm total width drawer system
 - 30kg load capacity per drawer
 - Ball bearing slides with de-tent lock
 - Particle board drawer base
 - Flush mounted drawer handles

Product Brochure For K234

Specific Features



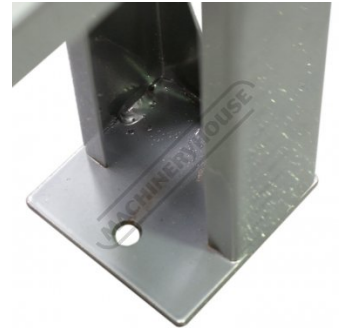
External Shelf Locking System



Internal Shelf Locking Wedge Type System



Shelf Wire Mesh



Foot Post with Bolt Down Provisions



Drawer



Shown Mounted to Racking with Drawers Closed



Shown with Drawers Closed



Ball Bearing Slides



Shown Mounted to Racking with Drawer Open

Product Brochure For K234

Recommended Accessories

S014A
 Industrial Steel Shelving
 Extension



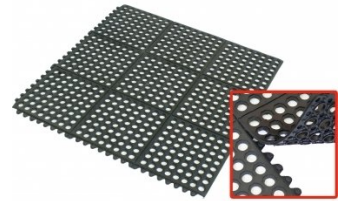
S014D
 2 x Drawer System - Suits
 Industrial Steel Shelving



M800
 Rubber Mat - Anti-Fatigue



M805
 Rubber Mat - Anti-Fatigue



A380
 Steel Work Bench - 3 x Lockable
 Drawers



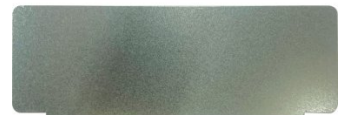
A420
 Industrial Work Bench



A426
 Industrial Backing Panel - Bench
 Mount



T790
 Steel Divider



Product Brochure For K234

T774
Industrial Storage Cabinet



T775
6 Drawer - Industrial Tooling Cabinet



T762
Industrial Storage Cupboard



T764
6 Drawer - Industrial Tooling Cabinet



T670
Platform Trolley - 300kg
Capacity

