

Product Brochure For K8172

## 20" Thicknesser - Spiral Cutterhead - T-20S, 415V

Built to School Specifications  
 NSW DOE Item 16B

### Please Call



|                                      |                      |
|--------------------------------------|----------------------|
| ORDER CODE:                          | K8172                |
| NSW DOE Item No.:                    | 16B                  |
| QLD DOE Item No.:                    | ~                    |
| MODEL:                               | Schools / TAFE T-20S |
| Width Capacity (mm):                 | 508                  |
| Height Capacity (mm):                | 200                  |
| HSS Cutter Blades:                   | ~                    |
| Spiral Cutter Head - Carbide Insert: | Yes                  |
| Motor Power (kW / hp):               | 3.75 / 5             |
| Voltage / Amperage (V / amp):        | 415                  |
| Nett Weight (kg):                    | 420                  |



### Description

The Taiwanese-manufactured T-20S Spiral Cutter Head Thicknesser is designed and proven to meet the demands of even the toughest woodworking workshops!

Constructed from robust cast iron, its solid base, feed tables, and cutter head ensure stability and excellent vibration absorption. Exceptional power is provided by a 3.75kW / 5hp 415V induction motor, housed in the base, which drives the cutter block via a twin-pulley V-belt system. Solid cast iron extension tables are fitted at both the front and rear, enhancing timber support, while a digital height gauge ensures precise and accurate adjustments.

The standout feature of this machine is its spiral cutter head. Featuring four rows of tungsten carbide cutters, it delivers an almost flawless finish. The cutters are arranged to produce a super-clean shear cut, with each cutter having four edges, allowing you to rotate to a fresh edge when needed. Damaged cutters can be replaced individually, minimizing waste and reducing costs. Each edge lasts up to 10 times longer than traditional HSS blades, significantly reducing downtime. Furthermore, the cutter head requires no blade setting, saving time and guaranteeing consistent accuracy.

### Features

- Quality Taiwanese manufacture, sold for over 30 years
- 508mm wide x 200mm high timber capacity
- Dynamically balanced 4 row spiral cutter head with 92 TCT indexing cutters
- Carbide inserts incorporate 4 cutting edges for reduced vibration
- Powerful 3.75kW, 5hp 415V induction motor
- Cutting speed 5000 rpm
- 2 speed feed rollers with pressure adjustment
- Ø125mm (5") dust port for efficient dust extraction
- Easy to read digital height gauge
- Table height locking mechanism secures all four pillars against unwanted movement.
- Heavy duty four post design with protective concertina covers

### Safety Features

- Anti kick back fingers
- Cutter head cover with integrated tool-locking mechanism
- Additional guarding installed on both sides of the machine to ensure maximum operator safety.
- DOL starter switch with overload protection and raised red stop button
- Keyed isolation switch - PWD approved

Product Brochure For K8172

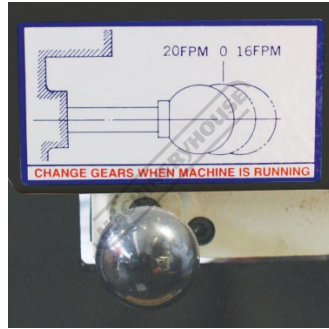
**Includes**

- Digital Height Gauge
- 92 Carbide Inserts

**Specific Features**



4 x Spiral Cutter Head with Carbide Inserts



2 Speed Feed Gearbox



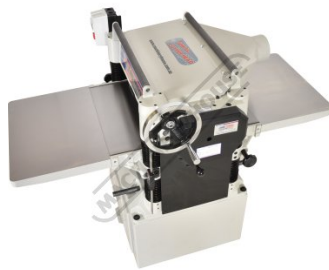
Digital height readout



Height adjustment handle



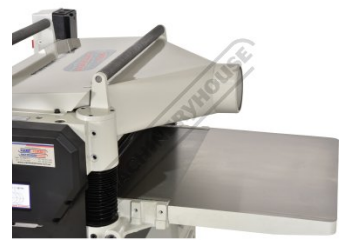
Robust 4 post design



Cast Iron Feed Tables



Return Rollers



Dust chute

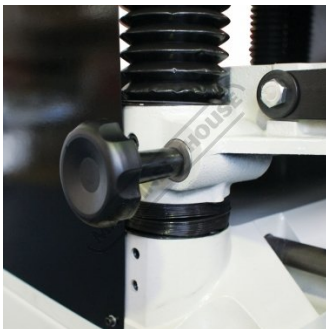


Table Height Lock



Protective Concertina Covers



Switch



Key lockable switch

Product Brochure For K8172



Lifting arms



Left view

**Recommended Accessories**

W416

Carbide Inserts for Spiral Cutter Heads on Thicknessers



W333

Dust Hose Reducer



W331

Industrial Dust Collector



W335

Blast Gate



W344

Wood Dust Accessory Kit



W336

Dust Hose Elbow - 90 Degree



W334

Dust Hose Reducer



W337

Dust Hose Y Adaptor



Product Brochure For K8172

---

W338

Dust Hose Universal Dust Hood



W339

Dust Hose Floor Sweeper Attachment



W340

Dust Hose Clamp



W341

Dust Hose Clamp

