

Product Brochure For K8220

BG-10 Heavy Duty Pedestal Grinder - Schools / TAFE

250mm

Please Call



ORDER CODE:	K8220
NSW DOE Item No.:	~
QLD DOE Item No.:	~
MODEL:	Schools / TAFE BG-10
Machine Type:	Grinder
Wheel Diameter (mm):	Ø250
Grinding Wheel Type:	Fine / Coarse
Buffing Wheel Type:	~
Spindle Shaft:	1" x 8TPI
Spindle Speed (RPM):	2850
Motor Power (kW / hp):	1 / 1.3
Voltage / Amperage (V / amp):	240 / 10
Nett Weight (kg):	65



Description

The Hafco Metalmaster BG-10 Bench Grinder, manufactured in Taiwan, is a robust and reliable machine designed for industrial use. With a heavy cast iron frame, a powerful 1.3HP motor, and 250mm grinding wheels, this bench grinder is built to handle the most demanding tasks. Additionally, it features heavy-duty toolrests which are supported on both sides of the wheels, providing excellent support for the workpiece.

Features

- High quality robust construction, manufactured in Taiwan
- 1.3HP high powered motor rated at it's true output power
- Fully balanced motor providing smooth operation
- Capacitor start and run provides instant startup and running power
- Heavy duty tool rests with dust chutes
- 1" x 8TPI spindle
- Ø250 x 38 x 25mm wheels (36-grit & 60-grit)
- Includes pedestal stand & water tray

Safety Features

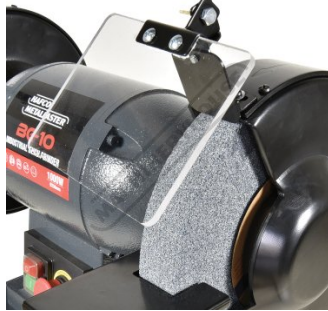
- Non Voltage Return (NVR) safety switch, which stops machine from re-starting during workshop power failures
- Emergency stop switch
- Adjustable spark protection eye shields
- Keyed isolation switch - PWD approved
- Test and tag certificate on 240V lead

Product Brochure For K8220

Specific Features



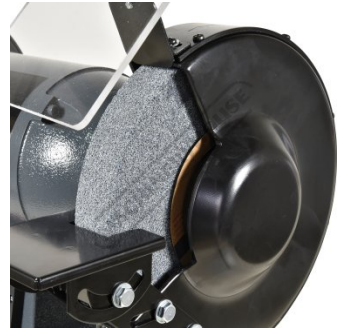
Tool Rest Dust Chute



Eye Shield



Fine Grinding Wheel



Course Grinding Wheel

Recommended Accessories

G189

0.5CT Grinding Wheel Dresser - Industrial Diamond Type



G189A

Grinding Wheel Dresser - Rotary Cutter Type



G188A

Grinder Wire Wheel - Crimped

