

Product Brochure For K8249

## Mill Drill Machine with Digital Readout - Includes Tooling Package - HM-46B DRO, 415V

Built to School Specifications  
 NSW DOE Item 23B



### Please Call

ORDER CODE:	K8249
NSW DOE Item No.:	23B
QLD DOE Item No.:	-
MODEL:	Schools / TAFE HM-46B
Digital Readout:	3-Axis Counter, X, Y Scales
Drilling Capacity (mm):	31.5
End Milling Capacity (mm):	28
Face Milling Capacity (mm):	80
Spindle Taper:	3MT
Quill Travel / Diameter (mm):	120 / 75
Spindle to Table (mm):	485
Type of Slides:	Dovetail
Spindle to Column (mm):	265
Table Size (mm):	730 x 210
T-Slot (mm):	14
Longitudinal Travel (X-Axis) (mm):	485*
Cross Travel (Y-Axis) (mm):	175*
Vertical Travel (Z-Axis) (mm):	430
Work Table Load Capacity (kg):	55
Swivel Head (Left - Right):	±90°
Quill Feed Rate/Rev (mm/rev):	Manual
Spindle Speeds (Vertical) (No. / rpm):	6 (95-1650rpm)
Spindle Speeds (Horizontal) (No. / rpm):	-
Motor Power (Vertical) (kW / hp):	1.5 / 2
Motor Power (Horizontal) (kW / hp):	-
Motor Voltage (V / amp):	415
Nett Weight (kg):	380



### Features

- 3-Axis digital readout counter fitted with 2-Axis X & Y scales only
  - Gear driven head 6 speeds
  - Dovetail vertical Z-axis
  - Mill head tilts to ±90° from vertical with digital display
  - Large 730 x 210mm ground work table with T-slots
  - Adjustable leadscrew nuts eliminating backlash on both axis
  - Fine feed hand wheel operating quill feed
  - Forward and reverse on/off button switches
  - Digital tilting head gauge
  - 3MT spindle with 75mm diameter quill
  - Adjustable table and drill length stops
  - Rack and pinion wind-up head
  - Rear slide-way cover and slide clamps on all axis
  - Spindle lock for quill
  - Table lock on both axis
  - Metric dial graduations @ 0.05mm for X & Y axis
  - Machine stand with swarf tray and side access door for storing parts
- \* Note: X & Y travels maybe reduced due to digital readout scales and safety stops  
 \* Note: Digital readout requires 10amp 240V power

### Safety Features

- Interlocked spindle safety guard
- Emergency stop switch
- Magnetic NVR on/off switch
- Keyed isolation switch - PWD approved

### Includes

— 3-Axis digital readout counter fitted with 2-Axis X & Y scales only

Product Brochure For K8249

- Machine stand with swarf tray
- 3MT x ER32 collet chuck set (C922B)
- 100mm tilting drill press vice (V114)
- 13mm keyless drill chuck (C292)
- 3MT x JT6 drill chuck arbor (D443)
- Ø50mm x 90° face mill (M510)
- MT3 - FMB22-20 face mill arbor (M562)
- Milling inserts (10 Inserts Per Pack) (L066)
- 10pc Metric HSS milling cutter set 4-10mm (M350)
- Digital tilting head gauge
- M12 x 1.75mm drawbar
- 1/2" x 12TPI drawbar

Specific Features



Right View



Front View



Tilt Head Left



Tilt Head Right



3 Axis Digital Readout



Quill Feed Lever



Fine Quill Feed Handwheel



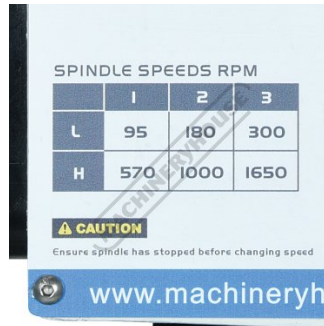
Head Controls



Forward Reverse ON OFF and Emergency Switches



Spindle Speed Selectors



Spindle Speed Chart



Rack And Pinion Wind Up Head

Product Brochure For K8249



Large Ground Work Table With T Slots



Tilting Head



Digital Tilting Head Gauged



Swivel Safety Guard



Included Accessories



3MT x ER32 Collet Chuck Set C922B



100mm Tilting Drill Press Vice V114



13mm Keyless Drill Chuck C292



3MT x JT6 Drill Chuck Arbor D443



50mm x 90 Face Mill M510 Tips not included



MT3 FMB22 20 Face Mill Arbor M562



Milling Inserts 10 Inserts Per Pack L066



10pc Metric HSS Milling Cutter Set 4 10mm M350

Product Brochure For K8249

**Recommended Accessories**

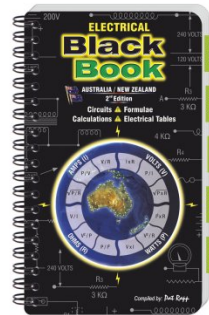
**M230**  
Power Feed Unit



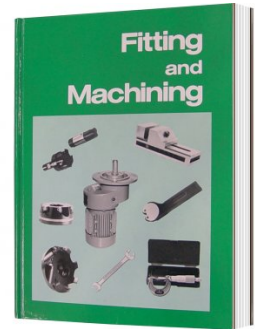
**M240**  
Transformer



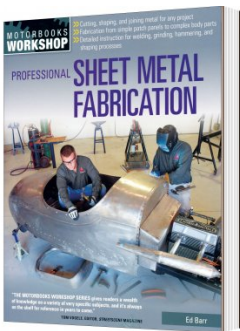
**L342**  
Electrical Black Book



**L341**  
Fitting and Machining Technical Book



**L3455**  
Professional Sheet Metal Fabrication Book



**C926**  
Collet & Chuck Set - 20 Piece



**C0965**  
Clamp Kit 58 piece - Workshop Series



**C922B**  
Collet & Chuck Set - 8 Piece Series



Product Brochure For K8249

**M333**

Metric HSS Slot Drill & End Mill Set - 12 Piece



**M335**

Imperial HSS Slot Drill & End Mill Set - 12 Piece



**M3280**

13mm HSS End Mill Long Series



**M182**

Precision Boring Head Kit



**M192**

Boring Head Shank



**M180**

Boring Bar Set - 9 piece



**M250**

Parallel Set - 8 Piece



**M530**

Universal Milling Kit - 4 Piece



**M562**

Face Mill Arbor



**M515**

Face Mill 45° - Super High-Rake



**L065**

KYOCERA Carbide Inserts - Milling



**M528**

Face Mill 90° - Positive Rake



Product Brochure For K8249

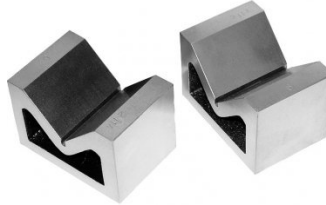
**M529**  
 Face Mill 90° - Positive Rake



**L066**  
 KYOCERA Carbide Inserts - Milling



**V004**  
 Cast Iron Vee Block



**V105**  
 Vertex K-Type Milling Vice



**R006**  
 Vertex Rotary Table



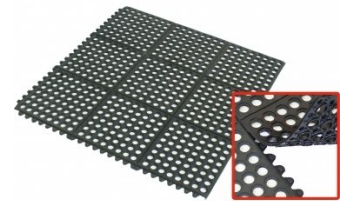
**P235**  
 Coolant Pump & Tank



**M800**  
 Rubber Mat - Anti-Fatigue



**M805**  
 Rubber Mat - Anti-Fatigue



**S090A**  
 Soluble Metal Cutting Fluid - 1 Litre



**S090**  
 Soluble Metal Cutting Fluid - 5 Litre



**S076**  
 Cutting Tool Lubricant Fluid - 500ml



**S077**  
 Drilling, Tapping & Cutting Tool Lubricant Spray - 400g



Product Brochure For K8249

S075

Cutting Tool Lubricant Paste - 200g



S074

Cutting Tool Lubricant Paste - 500g



O000

SpillFix Universal Organic Absorbent



O043

Rust & Corrosion Preventive



O042

General Purpose Lubricant & Corrosion Inhibitor



O040

Rust & Corrosion Preventive



O044

Rust & Corrosion Preventive

