

Product Brochure For K8738

## HG-460B Hydraulic NC Guillotine - QLD Schools / TAFE

QLD Contract

1300 x 6mm Mild Steel Shearing Capacity

### Please Call

ORDER CODE:	K8738
NSW DOE Item No.:	~
QLD DOE Item No.:	~
MODEL:	School / TAFE HG-460B
Shearing Thickness (mm):	6
Shearing Length (mm):	1300
Nett Weight (kg):	2046



### Features

- 1300mm x 6mm cutting capacity
- 5.5kW / 7.5hp 415V motor
- Ezy-Set NC-89 Go-To digital display controlled backgauge with DRO counter
- Quick action blade clearance adjustment for shearing material 1 - 6mm
- Hydraulic material clamping for accurate shearing
- One shot lubrication pump & reservoir for slideway protection
- Blades made from 9CrSi material suitable for cutting stainless steel
- Plate support tables with transfer balls for quick & easy material alignment and manoeuvrability
- Front sheet supports with ball bearing guides preventing material damage when setting up
- Three safety photo electric light beams on rear guarding
- Safety reset rear guarding button mounted to back of electrical box
- Heavy duty under driven machine construction
- Equipped with shadow line lighting-alignment device
- Roving foot pedal control
- Mild steel capacity is rated on hot rolled material with 250MPa

- Pre-Commissioning:
  1. Guillotine is run & tested prior delivery
  2. Hydraulic oil is included with machine

### Safety Features

- Three safety photo electric light beams on rear guarding
- Safety reset rear guarding button mounted to back of electrical box
- Emergency stop switch x 3
- Pad lockable isolation switch

Product Brochure For K8738

Specific Features



Right View



Rear View



NC 89 Control Panel



NC 89 Backgauge DRO



Squaring Arm



Squaring Arm with Measuring Scale



Material Transfer Balls On The Table



Front Sheet Supports



Front Sheet Supports with Roller Bearings



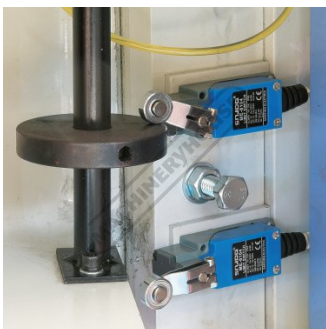
Back Gauge Drive Motor



3 Safety Photo Sensors



Safety Omron E3ZS Rear Light Sensor Guarding



Micro Switches



Quick Action Blade Clearance Adjustment Operation



Quick Action Blade Clearance Adjustment Swivel Handle



Quick Action Blade Clearance Adjustment

Product Brochure For K8738



One Shot Lubrication



Rear Guard Reset Button



Emergency Stop Switch



Mobile Foot Control

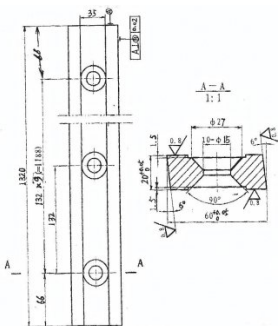


Shown with Optional Ball Transfer Tables - Order Code (L840)

**Recommended Accessories**

S9981

1320mm Sheet Metal Guillotine  
 Blade Set - 9CrSi



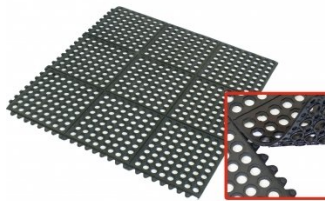
M800

Rubber Mat - Anti-Fatigue



M805

Rubber Mat - Anti-Fatigue



O000

SpillFix Universal Organic Absorbent



Product Brochure For K8738

O043  
 Rust & Corrosion Preventive



O042  
 General Purpose Lubricant & Corrosion Inhibitor



O040  
 Rust & Corrosion Preventive



O044  
 Rust & Corrosion Preventive



O004  
 Superdraulic ISO 46 Hi Temp Hydraulic Oil

