

Product Brochure For K8741

HM-46B Mill Drill Machine - Includes Tooling Package - QLD Schools / TAFE

(X) 485mm (Y)175mm (Z) 430mm
 QLD Contract Item No. 12.1

Please Call



ORDER CODE:	K8741
NSW DOE Item No.:	~
QLD DOE Item No.:	12.1
MODEL:	Schools / TAFE HM-46B
Digital Readout:	Optional
Drilling Capacity (mm):	31.5
End Milling Capacity (mm):	28
Face Milling Capacity (mm):	80
Spindle Taper:	3MT
Quill Travel / Diameter (mm):	120 / 75
Spindle to Table (mm):	485
Type of Slides:	Dovetail
Spindle to Column (mm):	265
Table Size (mm):	730 x 210
T-Slot (mm):	14
Longitudinal Travel (X-Axis) (mm):	485
Cross Travel (Y-Axis) (mm):	175
Vertical Travel (Z-Axis) (mm):	430
Work Table Load Capacity (kg):	55
Swivel Head (Left - Right):	±90°
Quill Feed Rate/Rev (mm/rev):	Manual
Spindle Speeds (Vertical) (No. / rpm):	6 (95-1650rpm)
Spindle Speeds (Horizontal) (No. / rpm):	~
Motor Power (Vertical) (kW / hp):	1.5 / 2
Motor Power (Horizontal) (kW / hp):	~
Motor Voltage (V / amp):	240 / 10
Nett Weight (kg):	380



Description

We for many years have been working in close consultation with the education departments to ensure the most suitable equipment is provided to our schools and TAFE, not only does it comply with the departments stringent safety requirements but is built to last the distance. That's why we consider our company to be a specialist when it comes to supplying quality Wood Work and Metal Working Machinery for Public or Private Schools, TAFE Colleges and Trade Training Centres in all states of Australia.

The HM-46 milling machines is similar in overall size to the popular RF-31 or HM-32 but with the additional benefit of a 6-speed 95-1650rpm, gear driven head which can be tilted up to 90° either side of the vertical. This feature allows the head to be positioned in a variety of positions, allowing a whole range of milling, slotting, grooving, drilling and boring operations to be carried out.

The usual handle-driven down feed is available for precision drilling and there is a fine manual down-feed control for precise vertical milling.

The motor is controlled by a standard forward and reverse on/off switch.

Also available is a optional power feed attachment which fits to the left hand end of the table and provides a smooth, variable speed longitudinal drive.

Features

- Gear driven head 6 speeds
- Dovetail vertical Z-axis
- Mill head tilts to ±90° from vertical with digital display
- Large 730 x 210mm ground work table with T-slots
- Adjustable leadscrew nuts eliminating backlash on both axis
- Fine feed hand wheel operating quill feed
- Forward and reverse on/off button switches
- Digital tilting head gauge
- 3MT spindle with 75mm diameter quill
- Adjustable table and drill length stops
- Rack and pinion wind-up head
- Rear slide-way cover and slide clamps on all axis

Product Brochure For K8741

- Spindle lock for quill
- Table lock on both axis
- Metric dial graduations @ 0.05mm for X & Y axis

Includes

- 125mm Machine Vice (V105)
- 75mm Face Mill Cutter (M512)
- MT3 x 27mm Face Mill Arbor (M563)
- Pkt of 10 Milling Inserts (L066)
- MT3 x 6 Piece Collet Chuck Set (C922B)
- 14mm Clamp Kit (C0965)
- 230mm 3 Jaw chuck (C280)
- 13mm Keyless Drill Chuck (C292)
- MT3 Drill Chuck Arbor (D443)
- 100mm- BS-0 Dividing Head (D001)
- 6-20mm Metric End Mill & Slot Drill Set (M3301)
- Digital tilting head gauge
- Drill chuck & arbor
- Face cutter & arbor
- Safety cutter guard
- M12 draw bar
- 1/2" x 12tpi whitworth draw bar

Specific Features



Front View



Tilting Head Left



Tilting Head Right



Quill Feed



Fine Quill Feed Handwheel



Head Controls



Forward Reverse ON OFF-Emergency Switches



Drill Chuck

Product Brochure For K8741



Rack And Pinion Wind Up Head



Quill Depth Stop Scale-Spindle Lock



Tilting Head



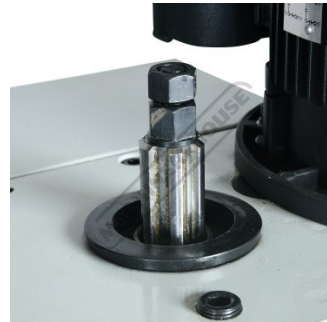
Digital Tilting Head Gauged



Table Cross Feed Handle



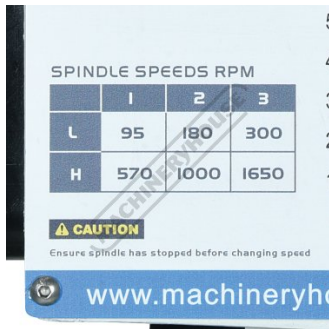
Table Longitudinal Handle



Drawbar



Motor-Drawbar



Spindle Speed Chart



Spindle Speed Selectors



Swivel Safety Guard



Ground Work Table with T Slots



Right View



Left View



Left Side View



Right Side View

Product Brochure For K8741



Included Accessories

Recommended Accessories

M230

Power Feed Unit



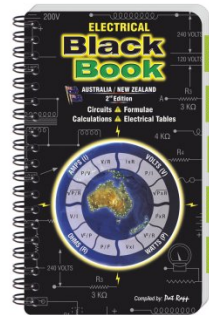
M240

Transformer



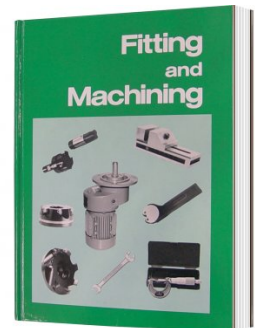
L342

Electrical Black Book



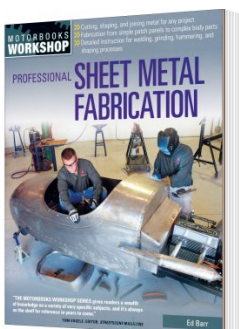
L341

Fitting and Machining Technical Book



L3455

Professional Sheet Metal Fabrication Book



C926

Collet & Chuck Set - 20 Piece



C0965

Clamp Kit 58 piece - Workshop Series



C922B

Collet & Chuck Set - 8 Piece



Product Brochure For K8741

M333
 Metric HSS Slot Drill & End Mill
 Set - 12 Piece



M335
 Imperial HSS Slot Drill & End
 Mill Set - 12 Piece



M3280
 13mm HSS End Mill Long
 Series



M182
 Precision Boring Head Kit



M192
 Boring Head Shank



M180
 Boring Bar Set - 9 piece



M250
 Parallel Set - 8 Piece



M530
 Universal Milling Kit - 4 Piece



M562
 Face Mill Arbor



M515
 Face Mill 45° - Super High-Rake



L065
 KYOCERA Carbide Inserts -
 Milling



M528
 Face Mill 90° - Positive Rake



Product Brochure For K8741

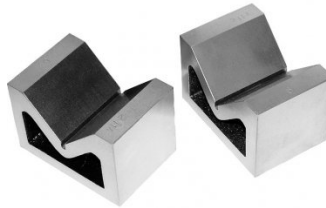
M529
 Face Mill 90° - Positive Rake



L066
 KYOCERA Carbide Inserts - Milling



V004
 Cast Iron Vee Block



V105
 Vertex K-Type Milling Vice



R006
 Vertex Rotary Table



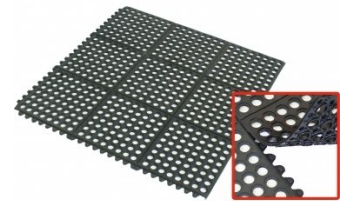
P235
 Coolant Pump & Tank



M800
 Rubber Mat - Anti-Fatigue



M805
 Rubber Mat - Anti-Fatigue



S090A
 Soluble Metal Cutting Fluid - 1 Litre



S090
 Soluble Metal Cutting Fluid - 5 Litre



S076
 Cutting Tool Lubricant Fluid - 500ml



S077
 Drilling, Tapping & Cutting Tool Lubricant Spray - 400g



Product Brochure For K8741

S075

Cutting Tool Lubricant Paste - 200g



S074

Cutting Tool Lubricant Paste - 500g



O000

SpillFix Universal Organic Absorbent



O043

Rust & Corrosion Preventive



O042

General Purpose Lubricant & Corrosion Inhibitor



O040

Rust & Corrosion Preventive



O044

Rust & Corrosion Preventive

