

Product Brochure For K8817

BG-10 Heavy Duty Pedestal Grinder - QLD Schools / TAFE

250mm

QLD Contract Item No. 31.2

Please Call



ORDER CODE:	K8817
NSW DOE Item No.:	~
QLD DOE Item No.:	31.2
MODEL:	Schools / TAFE BG-10
Machine Type:	Grinder
Wheel Diameter (mm):	Ø250
Grinding Wheel Type:	Fine / Coarse
Buffing Wheel Type:	~
Spindle Shaft:	1" x 8TPI
Spindle Speed (RPM):	~
Motor Power (kW / hp):	1 / 1.3
Voltage / Amperage (V / amp):	240 / 10
Nett Weight (kg):	49



Features

- High quality robust construction, manufactured in Taiwan
- 1.3HP high powered motor rated at it's true output power
- Fully balanced motor providing smooth operation
- Adjustable spark protection eye shields
- Capacitor start and run provides instant startup and running power
- Overload protection
- Heavy duty tool rests with dust chutes
- 1" x 8TPI spindle
- Ø250 x 38 x 25mm wheels (36-grit & 60-grit)

Safety Features

- Non Voltage Return (NVR) safety switch, which stops machine from re-starting during workshop power failures
- Emergency stop switch
- Test and tag certificate on 240V lead
- Emergency stop switch

OPTIONAL ITEMS

- (G182) GS-200 - Bench Grinder Stand
- 800mm stand height - Includes Plastic water tray

Product Brochure For K8817

Specific Features



Tool Rest Dust Chute



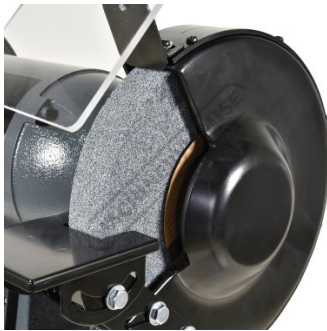
Tool Rest Dust Chute



Eye Shield



Fine Grinding Wheel



Course Grinding Wheel



Optional Bench Grinder Stand - G182

Recommended Accessories

G189

0.5CT Grinding Wheel Dresser - Industrial Diamond Type



G189A

Grinding Wheel Dresser - Rotary Cutter Type



G188A

Grinder Wire Wheel - Crimped

