

Product Brochure For L0515

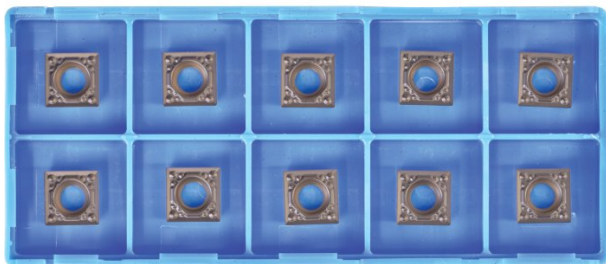
KYOCERA Carbide Inserts - Turning - SCMT09T304HQ

Grade CA125P - Finishing to Medium

10 Inserts Per Pack

On Sale

Ex GST	Inc GST
\$140.00	\$154.00
\$117.27	\$129.00



ORDER CODE:	L0515
MODEL:	SCMT09T304HQ
Grade:	CA125P
Application:	Finishing to Medium
Pieces in Set (No.):	10
I.C. (mm):	9.525
Thickness (S) (mm):	3.97
Hole Diameter Ø (D1) (mm):	4.4
Corner Radius (RE) (mm):	0.4
Relief Angle (Deg):	7°
d (mm):	~
Insert shape:	~
Use Classification:	~
Clearance Angle:	~

KYOCERA
 JAPANESE CARBIDE



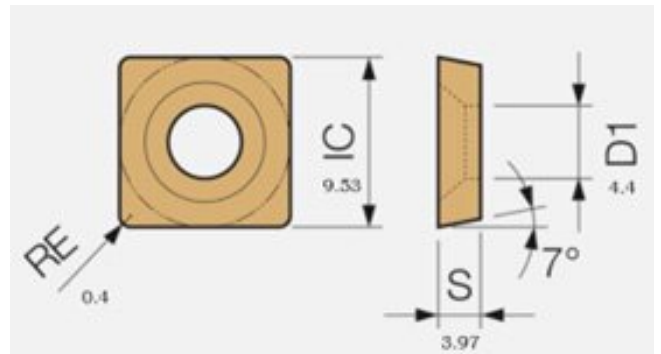
Description

CA125P Grade CVD Coated Carbide for Steel
 Suitable for continuous to heavy interrupted machining, these inserts are designed for general-purpose applications.

HQ Chipbreaker
 General purpose chipbreaker for medium machining.

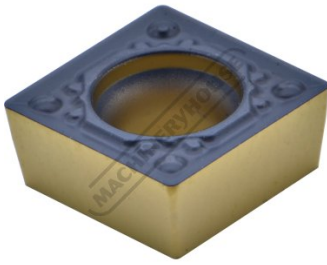
Features

- Japanese Made
- CVD Coated Carbide with Thin Ultra-fine TiCN Coating
- 10 Inserts Per Pack



Product Brochure For L0515

Specific Features



Tip



Tip Top View

Recommended Accessories

L4050

45° Square / Positive - Right
Hand Turning Tool Holder

L4052

45° Square / Positive - Right
Hand Turning Tool Holder

