

Product Brochure For L0517

KYOCERA Carbide Inserts - Turning - SNMG120404HQ

Grade CA125P - Roughing
 10 Inserts Per Pack

On Sale

Ex GST	Inc GST
\$160.00	\$176.00
\$135.45	\$149.00



ORDER CODE:	L0517
MODEL:	SNMG120404HQ
Grade:	CA125P
Application:	Roughing
Pieces in Set (No.):	10
I.C. (mm):	12.7
Thickness (S) (mm):	4.76
Hole Diameter Ø (D1) (mm):	5.16
Corner Radius (RE) (mm):	0.4
Relief Angle (Deg):	~
d (mm):	~
Insert shape:	~
Use Classification:	~
Clearance Angle:	~

KYOCERA
 JAPANESE CARBIDE



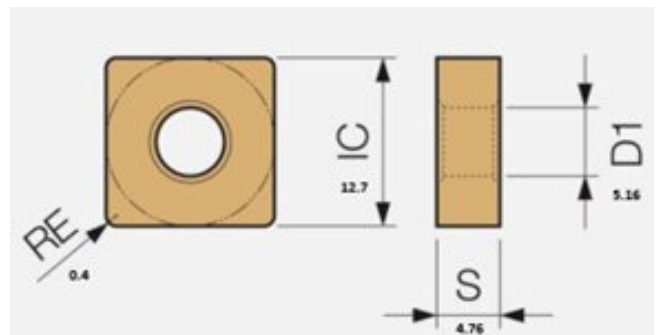
Description

CA125P Grade CVD Coated Carbide for Steel
 Suitable for continuous to heavy interrupted machining, these inserts are designed for general-purpose applications.

HQ Chipbreaker
 General purpose chipbreaker for medium machining.

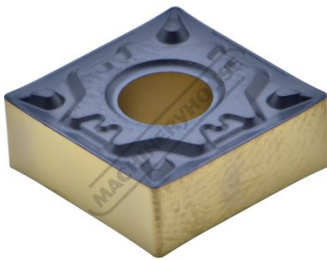
Features

- Japanese Made
- CVD Coated Carbide with Thin Ultra-fine TiCN Coating
- 10 Inserts Per Pack



Product Brochure For L0517

Specific Features



Tip



Tip Top View

Recommended Accessories

L4054

45° Square / Negative - Right
Hand Turning Tool Holder

L4056

45° Square / Negative - Right
Hand Turning Tool Holder

