

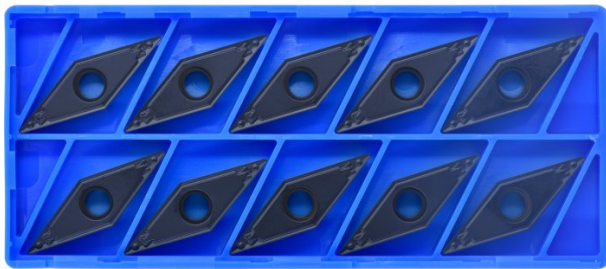
Product Brochure For L0521

35° Rhombic Positive Turning Insert - VCMT160404HQ

Grade CA125P - General Purpose Steel
 10 Inserts Per Pack

On Sale

Ex GST	Inc GST
\$190.00	\$209.00
\$162.73	\$179.00



ORDER CODE:	L0521
MODEL:	VCMT160404HQ
Grade:	CA125P
Application:	General Purpose Steel
Pieces in Set (No.):	10
I.C. (mm):	9.53
Thickness (S) (mm):	4.76
Hole Diameter Ø (D1) (mm):	4.4
Corner Radius (RE) (mm):	0.4
Relief Angle (Deg):	7°
d (mm):	~
Insert shape:	~
Use Classification:	~
Clearance Angle:	~

KYOCERA
 JAPANESE CARBIDE



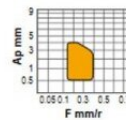
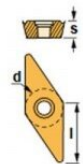
Description

CA125P Grade CVD Coated Carbide for Steel
 Suitable for continuous to heavy interrupted machining, these inserts are designed for general-purpose applications.

HQ Chipbreaker
 General purpose chipbreaker for medium machining.

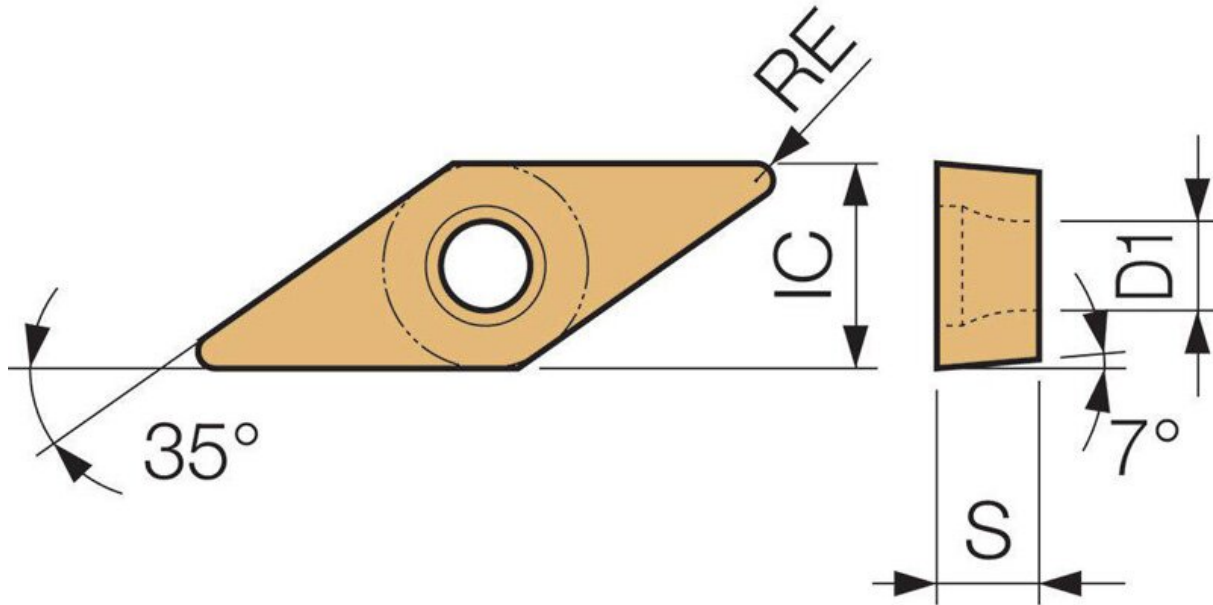
Features

- Japanese Made
- CVD Coated Carbide with Thin Ultra-fine TiCN Coating
- 10 Inserts Per Pack

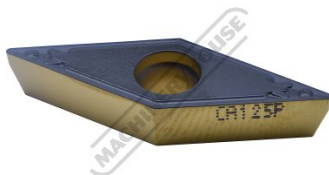


l	16.5 mm	d	9.52 mm
s	4.76 mm	r	0.4 mm

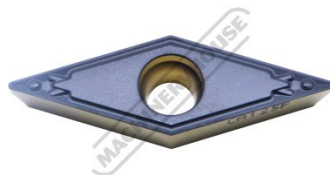
Product Brochure For L0521



Specific Features



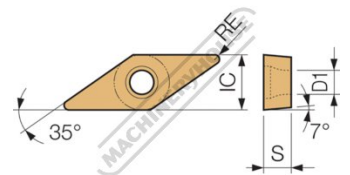
Side View



Top View



Bottom View



Diagram

Product Brochure For L0521

Recommended Accessories

L4062

93° Rhombic / Positive - Right
Hand Turning Tool Holder

L4064

93° Rhombic / Positive - Right
Hand Turning Tool Holder

