

Product Brochure For L0602

KYOCERA Carbide Inserts - Turning - CNMG 120408PMG

Grade CA125P - General Purpose Steel

10 Inserts Per Pack

On Sale

Ex GST	Inc GST
\$140.00	\$154.00
\$117.27	\$129.00



ORDER CODE:	L0602
MODEL:	CNMG120408PS
Grade:	CA125P
Application:	General Purpose Steel
Pieces in Set (No.):	10
I.C. (mm):	12.7
Thickness (S) (mm):	4.76
Hole Diameter Ø (D1) (mm):	5.16
Corner Radius (RE) (mm):	0.80
Relief Angle (Deg):	~
d (mm):	12.7
Insert shape:	~
Use Classification:	~
Clearance Angle:	~

KYOCERA
 JAPANESE CARBIDE



Description

CA125P Grade CVD Coated Carbide for Steel

Suitable for continuous to heavy interrupted machining, these inserts are designed for general-purpose applications.

PMG Chipbreaker

Covers a wide range of machining applications from medium machining to roughing.

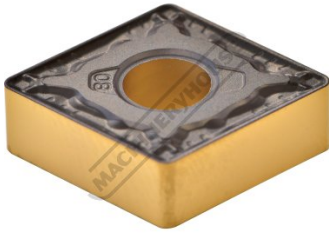
Excellent wear resistance with low cutting force design. Reduces chip shape inconsistencies and improves tool life.

Features

- Japanese Made
- CVD Coated Carbide with Thin Ultra-fine TiCN Coating
- 10 Inserts Per Pack

Product Brochure For L0602

Specific Features



Tip