

Product Brochure For L073

## Parting Tool Holder - Suits 1/2" HSS Tool Bit

16mm Tool Height  
 HSS blade not included

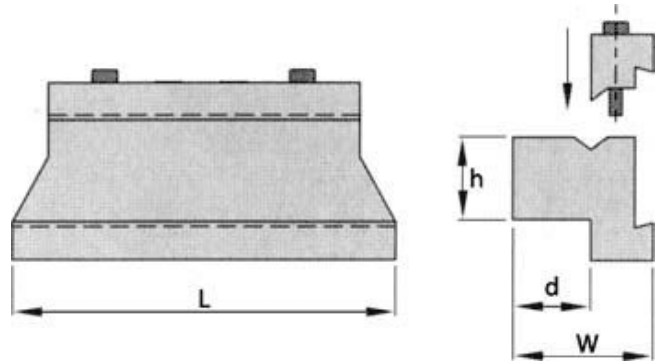
**On Sale**

Ex GST  
~~\$30.00~~  
**\$24.55**

Inc GST  
~~\$33.00~~  
**\$27.00**



ORDER CODE:	L073
Blade Size (inch):	1/2" x 3/32"
Tool Height (mm):	16
L (mm):	125
W (mm):	10
h (mm):	22
d (mm):	~
Nett Weight (kg):	0.36



### Description

NOTE: Parting blade not supplied  
 Uses Parting Blade L0007

Designed to suit 16mm Tool Height

### Features

- Case-hardened and ground
- To suit tool steel blades
- Positive locking ensures longer blade life

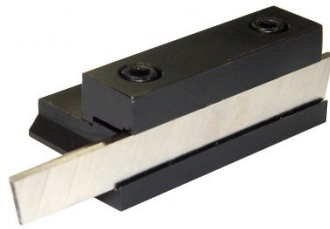
Product Brochure For L073

**Recommended Accessories**

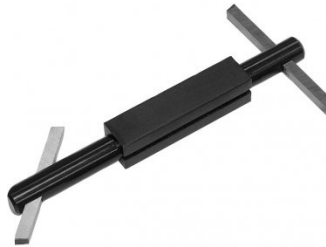
**L0007**  
 Part Off Blade - High Speed  
 Steel Bit



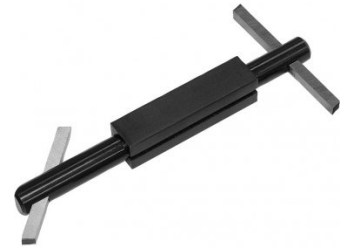
**L074**  
 Parting Tool Holder - Suits 1/2"  
 HSS Tool Bit



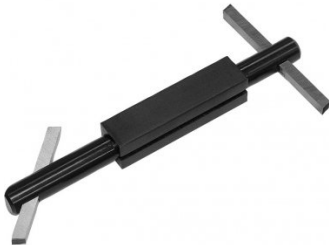
**L100**  
 Boring Bar with Holder



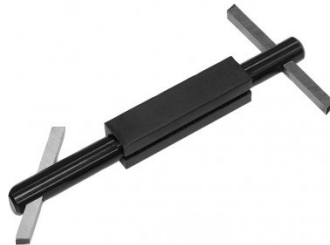
**L101**  
 Boring Bar with Holder



**L102**  
 Boring Bar with Holder



**L103**  
 Boring Bar with Holder



**L104**  
 Boring Bar with Holder



**L006A**  
 Boring Bar Set - HSS



Product Brochure For L073

**L431**  
 Boring Bar Set - Carbide Insert



**L430**  
 Boring Bar Set - Carbide Insert



**L070L**  
 Left Hand Lathe Turning Tool Holder - American Style



**L070R**  
 Right Hand Lathe Turning Tool Holder - American Style

**L070S**  
 Straight Lathe Turning Tool Holder - American Style

