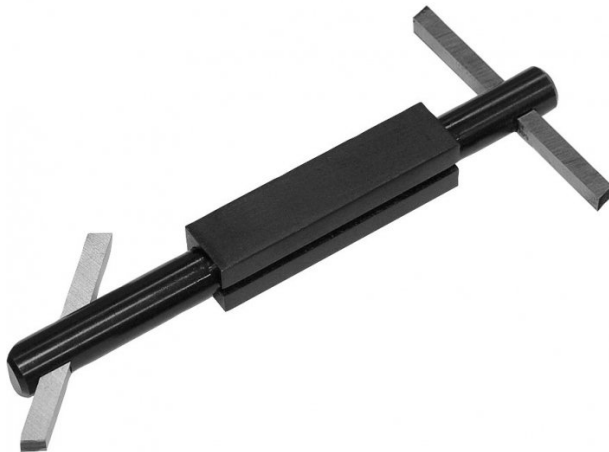


Product Brochure For L102

Boring Bar with Holder

1/4"

HSS bit not included

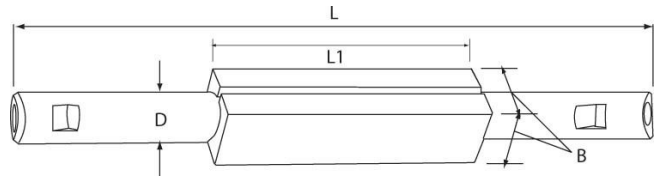


On Sale

Ex GST
~~\$25.00~~
\$20.91

Inc GST
~~\$27.50~~
\$23.00

ORDER CODE:	L102
B:	3/4"
D:	9/16"
L:	6-3/4"
L1:	3"
Toolbit Required:	1/4" (L0003)
Nett Weight (kg):	0.38



Description

NOTE: HSS Tool bits not supplied
 Use 1/4" HSS Tool Bit (L0003)

Features

- Double-ended bars with 45° and 90° angular square holes at either end
- Accurately broached square holes to accept standard high speed steel or carbide tool bits
- Supplied fitted with screws and allen key

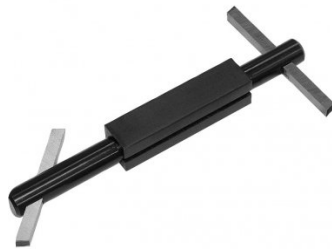
Product Brochure For L102

Recommended Accessories

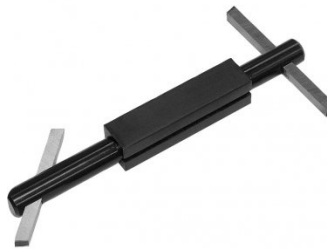
L0003
 High Speed Steel Bits - Pack of 3



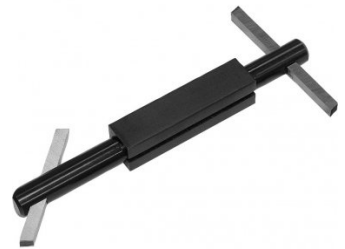
L100
 Boring Bar with Holder



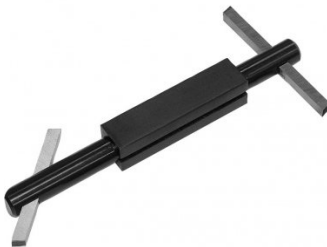
L101
 Boring Bar with Holder



L103
 Boring Bar with Holder



L104
 Boring Bar with Holder



L006A
 Boring Bar Set - HSS



L431
 Boring Bar Set - Carbide Insert



L430
 Boring Bar Set - Carbide Insert



Product Brochure For L102

L073

Parting Tool Holder - Suits 1/2"
HSS Tool Bit



L074

Parting Tool Holder - Suits 1/2"
HSS Tool Bit



L070L

Left Hand Lathe Turning Tool
Holder - American Style



L070R

Right Hand Lathe Turning Tool
Holder - American Style



L070S

Straight Lathe Turning Tool
Holder - American Style

