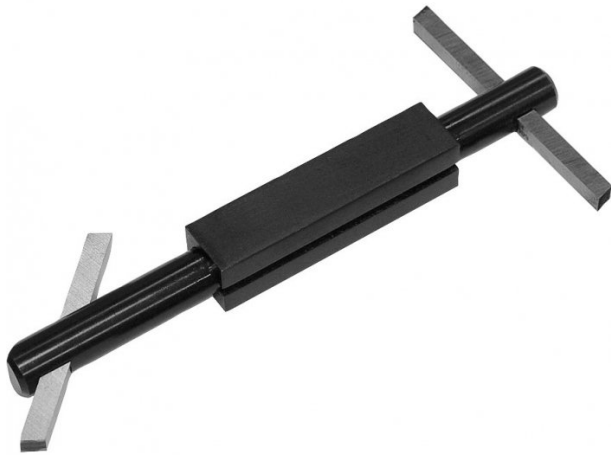


Product Brochure For L103

## Boring Bar with Holder

5/16"

HSS bit not included



**On Sale**

Ex GST

~~\$35.00~~

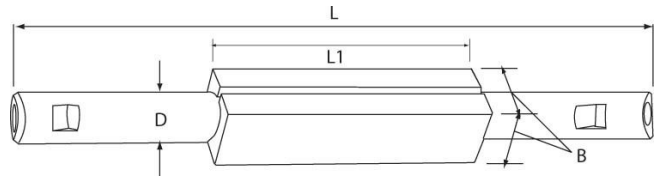
**\$29.09**

Inc GST

~~\$38.50~~

**\$32.00**

ORDER CODE:	L103
B:	1"
D:	3/4"
L:	9"
L1:	3-3/4"
Toolbit Required:	5/16" (L0004)
Nett Weight (kg):	0.55



### Description

NOTE: HSS Tool bits not supplies  
 Use 5/16" HSS Tool Bit (L0004)

### Features

- Double-ended bars with 45° and 90° angular square holes at either end
- Accurately broached square holes to accept standard high speed steel or carbide tool bits
- Supplied fitted with screws and allen key

Product Brochure For L103

**Recommended Accessories**

L0004  
 High Speed Steel Bits - Pack of 3

L100  
 Boring Bar with Holder

L101  
 Boring Bar with Holder

L102  
 Boring Bar with Holder



L104  
 Boring Bar with Holder

L006A  
 Boring Bar Set - HSS

L431  
 Boring Bar Set - Carbide Insert

L430  
 Boring Bar Set - Carbide Insert



Product Brochure For L103

---

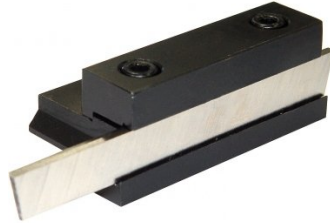
**L073**

Parting Tool Holder - Suits 1/2"  
HSS Tool Bit



**L074**

Parting Tool Holder - Suits 1/2"  
HSS Tool Bit



**L070L**

Left Hand Lathe Turning Tool  
Holder - American Style



**L070R**

Right Hand Lathe Turning Tool  
Holder - American Style



**L070S**

Straight Lathe Turning Tool  
Holder - American Style

