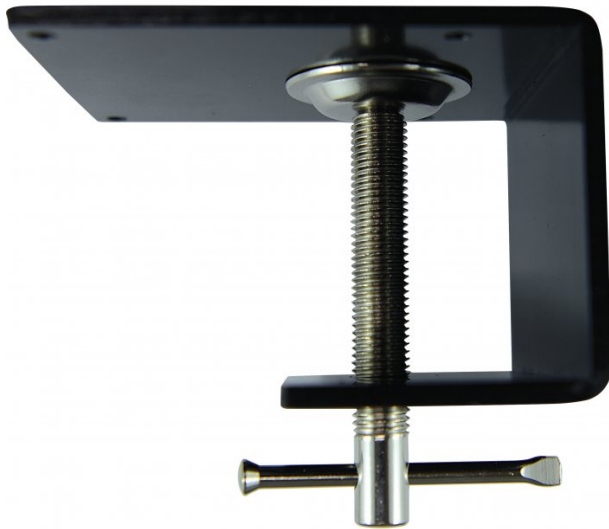


Product Brochure For L2818

Work Light Clamp Bracket - HBL-01

4 x M4 Threaded Holes
 60mm x 60mm Hole Centres



ORDER CODE:	L2818
MODEL:	HBL-01
Type:	Clamp Bracket
Size (mm):	~
Light - Watts / Lumens / Kelvins (W / L / K):	~
Power (W):	~
Voltage / Amperage (V / amp):	~
Built-in Transformer (Yes / No):	~
Magnetic Base (Yes / No):	~
Charging Cable Type (metre):	~
Colour Temperature (K):	~
Nett Weight (kg):	1



Description

Clamp bracket suits following Work lights:

- HL-35T - 35W Halogen work Light - (L283)
- HL-35LT - 7W LED Work Light - (L2814)
- HL-55T - 55W Halogen Work Light - (L285)
- HL-14LT - 14W LED Work Light - (L2816)

Features

- Clamps up to 45mm thickness
- 4 x M4 threaded holes
- 60mm x 60mm hole centres
- Made from 4mm steel plate

Product Brochure For L2818

Specific Features



Front View



Top Plate, 60 x 60mm Centres



Clamped To Table - Side View



Clamped To Table - Front View



Shown with Lamp Attached

Recommended Accessories

L2814

7W LED Work Light

L2816

14W LED Work Light

