

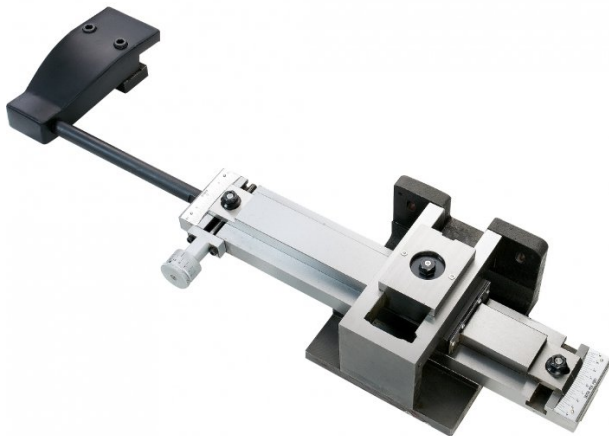
Product Brochure For L639T

Taper Turning Attachment - TPA-2000

Suit TM-2260G, TM-2290G, TM-2680G & TM-26120G Centre Lathes
 ±10° x 300mm Taper Length

On Sale

Ex GST	Inc GST
\$3,250.00	\$3,575.00
\$2,950.00	\$3,245.00



ORDER CODE:	L639T
MODEL:	TPA-2000
Taper Travel (mm):	300
Suits Lathes:	TM-2260G, TM-2290G, TM-2680G, TM-26120G
Nett Weight (kg):	50



Description

Suits TM-2260G & TM-2290G, TM-2680G & TM-26120G Centre Lathes

Features

- 300mm taper turning travel
- ±10° adjustable taper in 1° increments
- Dial wheel for fine taper adjustments
- Comes with mounting brackets, swarf cover & stops
- Weight: 48kg

Product Brochure For L639T

Recommended Accessories

L637D
Centre Lathe

L638D
Centre Lathe

L639D
Centre Lathe

L642D
Centre Lathe

