

Product Brochure For M150A

Mini Mill Drill - Tilting Head - HM-10L (SIEG X2L)

Table Travel: (X) - 300mm (Y) - 130mm (Z) - 180mm

Dovetail Vertical Column



ORDER CODE:	M150A
MODEL:	HM-10L (X2L)
Digital Readout:	Optional
Type:	Vertical
Table Size (mm):	460 x 120
Column Type:	Dovetail
Spindle Taper - Vertical:	3MT
Spindle Taper - Horizontal:	~
Longitudinal Travel (X-Axis) (mm):	300
Cross Travel (Y-Axis) (mm):	130
Vertical Travel (Z-Axis) (mm):	180
Type of Slides:	Dovetail
Ram Travel (mm):	~
Spindle to Table (mm):	280
Spindle to Base:	~
Spindle Travel / Diameter (mm):	Fixed
Throat Depth (max.) (mm):	160
Tilting Head (Left ~ Right):	±45°
Tilting Head (Forward ~ Back):	Fixed
Drilling Capacity (mm):	13
End Milling Capacity (mm):	16
Face Milling Capacity (mm):	30
Power Feed - Quill (mm/rev):	~
Power Feed - Longitudinal (X-Axis) (mm/min):	~
Power Feed - Cross (Y-Axis) (mm/min):	~
Power Feed - Vertical (Z-Axis) (mm/min):	~
Table T-Slot Size (inch / mm):	12
Work Table Load Capacity (kg):	25
Spindle Speeds Vertical (No./ rpm):	Variable (100 - 2500)
Spindle Speeds Horizontal (No./ rpm):	~
Spindle Speeds - Universal Head:	~
Motor Power - Vertical Spindle (kW / hp):	0.35 / 0.5
Motor Power - Horizontal Spindle (kW / hp):	~
Motor Power - Universal Head:	~
Voltage / Amperage (V / amp):	240 / 10
Nett Weight (kg):	78

Description

Excellent quality mini mill drill machine designed for the model engineer

Features

- The HM-10L mini mill drill is powered by a 350W (1/2hp) electronic variable speed motor
- Mill head tilts to ±45° both directions
- Heavy duty cast iron body and base for better stability
- All slides utilise dovetail construction for maximum rigidity
- Precision machined work table
- 2-speed gearbox (high/low) drive system to maximise torque
- Ground work table with T-slots
- Concertina slide-way covers
- Spring assisting milling head return
- Vertical micro feed dial 0.025mm
- Metric dial graduations 0.02mm

Includes

— 13mm keyed drill chuck

Product Brochure For M150A

- 3MT Arbor
- Set of spanners to suit
- Safety cutter guard

Specific Features



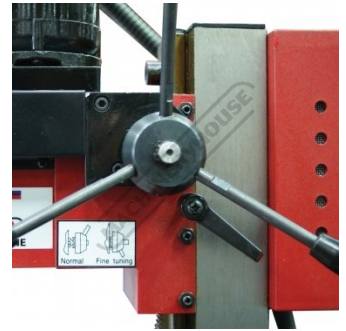
Electronic variable speed system



Switch Box



Head Right View



9 Quill Handle



Head Controls



Head Left View



Chuck Guard



Fine Adjustment Dial



Low High Speed Lever



Vertical Height reading



Milling head Tilts 45 Degrees both directions



Sliding Lock



Milling table

Product Brochure For M150A

Recommended Accessories

T773
 Industrial Mobile Tooling
 Cabinet Workstation



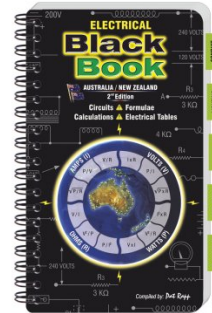
L300
 Magnetic Swarf Remover



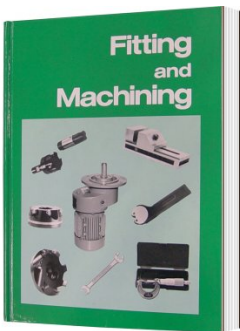
M9991
 Magnetic Floor Sweeper



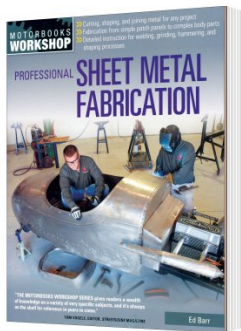
L342
 Electrical Black Book



L341
 Fitting and Machining Technical
 Book



L3455
 Professional Sheet Metal
 Fabrication Book



C926
 Collet & Chuck Set - 20 Piece



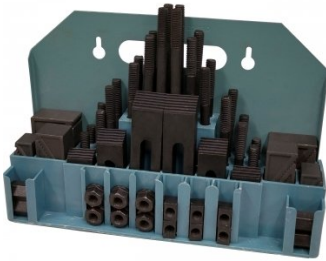
C922B
 Collet & Chuck Set - 8 Piece



Product Brochure For M150A

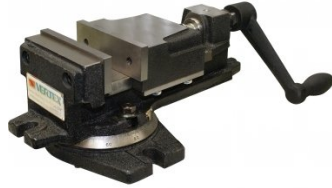
C0955

Clamp Kit 58 piece - Workshop Series



V104

Vertex K-Type Milling Vice



M3301

Metric HSS Slot Drill & End Mill Set - 10 Piece



M3321

Imperial HSS Slot Drill & End Mill Set - 10 Piece



M3280

13mm HSS End Mill Long Series



M182

Precision Boring Head Kit



M192

Boring Head Shank



M180

Boring Bar Set - 9 piece



M250

Parallel Set - 8 Piece



M530

Universal Milling Kit - 4 Piece



M528

Face Mill 90° - Positive Rake



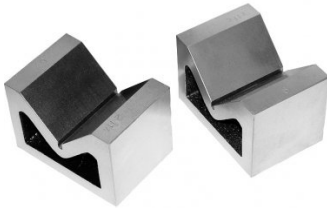
L066

KYOCERA Carbide Inserts - Milling



Product Brochure For M150A

V004
 Cast Iron Vee Block



R001
 Rotary Table



R0014
 Tilting Rotary Table



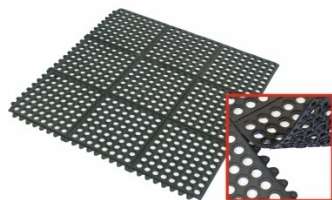
P235
 Coolant Pump & Tank



M800
 Rubber Mat - Anti-Fatigue



M805
 Rubber Mat - Anti-Fatigue



S090A
 Soluble Metal Cutting Fluid - 1
 Litre



S090
 Soluble Metal Cutting Fluid - 5
 Litre



S076
 Cutting Tool Lubricant Fluid -
 500ml



S077
 Drilling, Tapping & Cutting Tool
 Lubricant Spray - 400g



S075
 Cutting Tool Lubricant Paste -
 200g



S074
 Cutting Tool Lubricant Paste -
 500g



Product Brochure For M150A

O000

SpillFix Universal Organic Absorbent



O043

Rust & Corrosion Preventive



O042

General Purpose Lubricant & Corrosion Inhibitor



O040

Rust & Corrosion Preventive



O044

Rust & Corrosion Preventive

