

Product Brochure For M151

Mill Head Attachment - HM-10A (SIEG M6MA)



ORDER CODE:	M151
MODEL:	HM-10A
Digital Readout:	Optional
Type:	Vertical
Table Size (mm):	110 x 245
Column Type:	Dovetail
Spindle Taper - Vertical:	3MT
Spindle Taper - Horizontal:	~
Longitudinal Travel (X-Axis) (mm):	~
Cross Travel (Y-Axis) (mm):	~
Vertical Travel (Z-Axis) (mm):	190
Type of Slides:	Dovetail
Ram Travel (mm):	~
Spindle to Table (mm):	~
Spindle to Base:	~
Spindle Travel / Diameter (mm):	Fixed
Throat Depth (max.) (mm):	160
Tilting Head (Left ~ Right):	-25° to 45°
Tilting Head (Forward ~ Back):	Fixed
Drilling Capacity (mm):	13
End Milling Capacity (mm):	13
Face Milling Capacity (mm):	25
Power Feed - Quill (mm/rev):	~
Power Feed - Longitudinal (X-Axis) (mm/min):	~
Power Feed - Cross (Y-Axis) (mm/min):	~
Power Feed - Vertical (Z-Axis) (mm/min):	~
Table T-Slot Size (inch / mm):	~
Work Table Load Capacity (kg):	~
Spindle Speeds Vertical (No./ rpm):	Variable (100 - 2500)
Spindle Speeds Horizontal (No./ rpm):	~
Spindle Speeds - Universal Head:	~
Motor Power - Vertical Spindle (kW / hp):	0.35 / 0.5
Motor Power - Horizontal Spindle (kW / hp):	~
Motor Power - Universal Head:	~
Voltage / Amperage (V / amp):	240 / 10
Nett Weight (kg):	42

Features

- 2-speed gearbox (high/low) drive system to maximise torque
- 350W (1/2hp) electronic variable-speed controlled motor
- Heavy duty cast iron body and base for better stability
- Slides utilise dovetail construction for maximum rigidity
- Milling head tilts -25° to 45°
- Spring assisting milling head return
- Vertical micro feed dial 0.025mm
- Metric dial graduations 0.02mm
- Supplied with a ground work table that incorporates 12mm T-slots that attaches to the cross slide

Includes

- 13mm keyed drill chuck
- 3MT Arbor
- Set of spanners to suit
- Safety cutter guard

Optional Accessories

- AL-60 Bench lathe (L148)

Product Brochure For M151

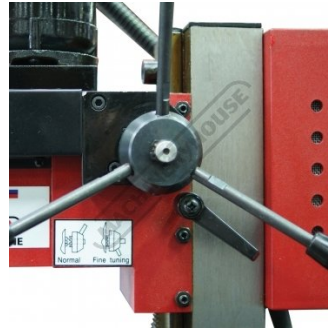
Specific Features



Shown Mounted to Optional AL 60 Lathe



Head Right View



Z-Axis Head Lever



Head Support Lock



Z-Axis Fine Adjustment Dial

MILLING & DRILLING	
Drilling capacity	13 mm
End milling capacity	16 mm
Face milling capacity	30 mm
Spindle taper	MT#3
Spindle rotary angle	-25° ~ +45°
output power	350W
Spindle speed	LOW :
	0~1100 rpm
Spindle speed	HIGH:
	0~2500 rpm
Voltage	220~240V AC
Frequency	50/60 Hz

Capacities



Variable Speed Control



Chuck Guard



Stop Switch



Height Indicator



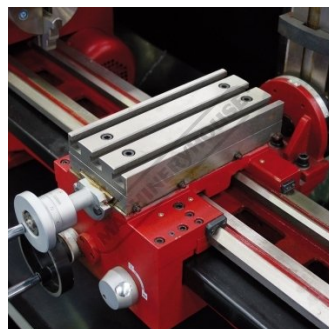
Head Left View



Low High Speed Lever



Swivel Head



Milling Table Shown on Optional Lathe



Shown Mounted on Optional Lathe with Milling Table

Product Brochure For M151

Recommended Accessories

D695
 3-Axis Optimum Digital Readout
 Counter - 1µm



D694
 1500mm Optimum Magnetic
 Digital Readout Scale



C922B
 Collet & Chuck Set - 8 Piece



C0955
 Clamp Kit 58 piece - Workshop
 Series



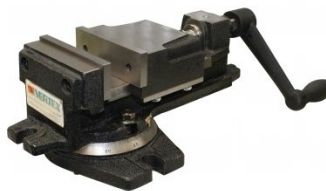
C926
 Collet & Chuck Set - 20 Piece



M3301
 Metric HSS Slot Drill & End Mill
 Set - 10 Piece



V104
 Vertex K-Type Milling Vice



R0014
 Tilting Rotary Table



Product Brochure For M151

R001
 Rotary Table



M3321
 Imperial HSS Slot Drill & End Mill Set - 10 Piece



M3280
 13mm HSS End Mill Long Series



M182
 Precision Boring Head Kit



M192
 Boring Head Shank



M180
 Boring Bar Set - 9 piece



M250
 Parallel Set - 8 Piece



M530
 Universal Milling Kit - 4 Piece



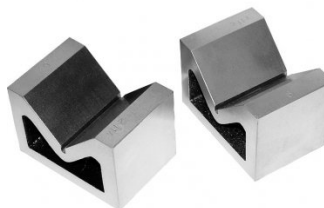
M528
 Face Mill 90° - Positive Rake



L066
 KYOCERA Carbide Inserts - Milling



V004
 Cast Iron Vee Block



P235
 Coolant Pump & Tank



Product Brochure For M151

S090A
 Soluble Metal Cutting Fluid - 1 Litre



S090
 Soluble Metal Cutting Fluid - 5 Litre



S076
 Cutting Tool Lubricant Fluid - 500ml



S077
 Drilling, Tapping & Cutting Tool Lubricant Spray - 400g



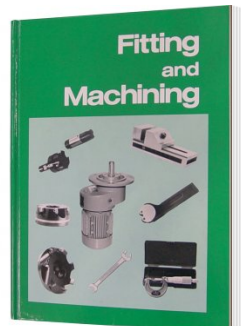
S075
 Cutting Tool Lubricant Paste - 200g



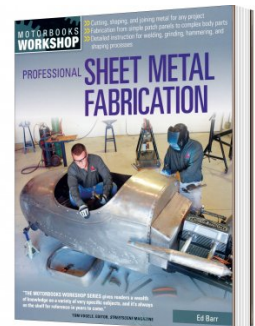
S074
 Cutting Tool Lubricant Paste - 500g



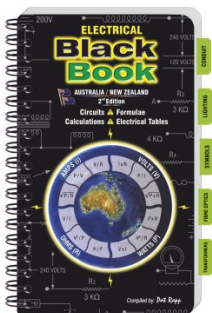
L341
 Fitting and Machining Technical Book



L3455
 Professional Sheet Metal Fabrication Book



L342
 Electrical Black Book



M9991
 Magnetic Floor Sweeper



L300
 Magnetic Swarf Remover

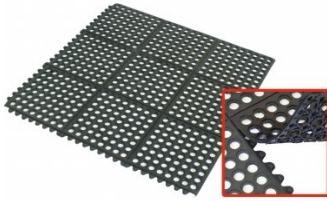


M800
 Rubber Mat - Anti-Fatigue



Product Brochure For M151

M805
 Rubber Mat - Anti-Fatigue



O000
 SpillFix Universal Organic Absorbent



O043
 Rust & Corrosion Preventive



O042
 General Purpose Lubricant & Corrosion Inhibitor



O040
 Rust & Corrosion Preventive



O044
 Rust & Corrosion Preventive

