

Product Brochure For M153

Mill Drill - Geared Head + Variable Speed - SIEG X3

Table Travel: (X) - 400mm (Y) - 150mm (Z) - 350mm

Dovetail Vertical Column



| | |
|--|-----------------------|
| ORDER CODE: | M153 |
| MODEL: | X3 |
| Digital Readout: | Optional |
| Type: | Vertical |
| Table Size (mm): | 550 x 160 |
| Column Type: | Dovetail |
| Spindle Taper - Vertical: | 3MT |
| Spindle Taper - Horizontal: | ~ |
| Longitudinal Travel (X-Axis) (mm): | 400 |
| Cross Travel (Y-Axis) (mm): | 150 |
| Vertical Travel (Z-Axis) (mm): | 350 |
| Type of Slides: | Dovetail |
| Ram Travel (mm): | ~ |
| Spindle to Table (mm): | 400 |
| Spindle to Base: | ~ |
| Spindle Travel / Diameter (mm): | 82 / 60 |
| Throat Depth (max.) (mm): | 230 |
| Tilting Head (Left ~ Right): | Fixed |
| Tilting Head (Forward ~ Back): | Fixed |
| Drilling Capacity (mm): | 25 |
| End Milling Capacity (mm): | 25 |
| Face Milling Capacity (mm): | 50 |
| Power Feed - Quill (mm/rev): | ~ |
| Power Feed - Longitudinal (X-Axis) (mm/min): | Optional |
| Power Feed - Cross (Y-Axis) (mm/min): | ~ |
| Power Feed - Vertical (Z-Axis) (mm/min): | ~ |
| Table T-Slot Size (inch / mm): | 12 |
| Work Table Load Capacity (kg): | 35 |
| Spindle Speeds Vertical (No./ rpm): | Variable (100 - 2000) |
| Spindle Speeds Horizontal (No./ rpm): | ~ |
| Spindle Speeds - Universal Head: | ~ |
| Motor Power - Vertical Spindle (kW / hp): | 0.6 / 0.75 |
| Motor Power - Horizontal Spindle (kW / hp): | ~ |
| Motor Power - Universal Head: | ~ |
| Voltage / Amperage (V / amp): | 240 / 10 |
| Nett Weight (kg): | 178 |

Description

Excellent quality mill drill machine designed for the model engineer.

This X3 mill drill machine has a (High / Low) 2-speed gearbox drive system to maximise torque: 0-1000rpm and 100-2000rpm ideal for different types of material.

The X3 mill drill is powered by a 600W (0.75hp) electronic variable speed motor adjusted by a dial located on the side control panel.

Heavy duty cast iron body and base for better stability.

Precision machined work table.

Features

- Electronic variable speed system
- 2-speed gearbox (high/low) drive system to maximise torque
- All slides utilise dovetail construction for maximum rigidity
- Milling head is fixed at 90°
- Spindle lock for quill

Product Brochure For M153

- Metal gears in gearbox
- Ground work table with T-slots
- Metric dial graduations @ 0.02mm for X & Y axis
- Vertical dial graduations @ 0.01mm

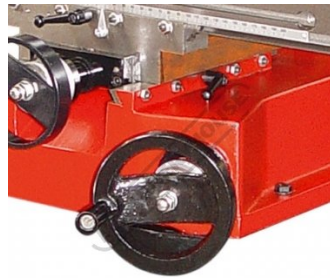
Includes

- Drill chuck
- 3MT arbor

Specific Features



Dovetail Column



Vertical Head Adjustment



Hi Low Gearbox



3MT Drill Chuck



Shown mounted to Optional Stand

Recommended Accessories

D695

3-Axis Optimum Digital Readout Counter - 1µm

D694

1500mm Optimum Magnetic Digital Readout Scale

C922B

Collet & Chuck Set - 8 Piece

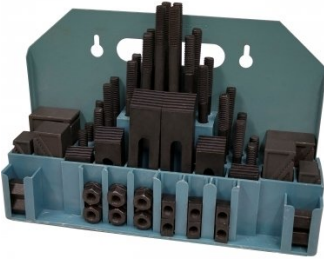
C926

Collet & Chuck Set - 20 Piece

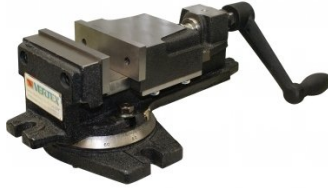


Product Brochure For M153

C0955
 Clamp Kit 58 piece - Workshop Series



V104
 Vertex K-Type Milling Vice



C085A
 Clamp Kit Tee Nuts



M3301
 Metric HSS Slot Drill & End Mill Set - 10 Piece



M3321
 Imperial HSS Slot Drill & End Mill Set - 10 Piece



M3280
 13mm HSS End Mill Long Series



M182
 Precision Boring Head Kit



M192
 Boring Head Shank



M180
 Boring Bar Set - 9 piece



M250
 Parallel Set - 8 Piece



M530
 Universal Milling Kit - 4 Piece



M562
 Face Mill Arbor



Product Brochure For M153

M515
 Face Mill 45° - Super High-Rake



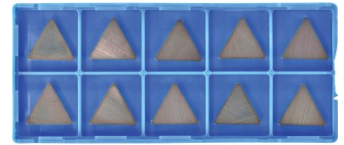
L065
 KYOCERA Carbide Inserts - Milling



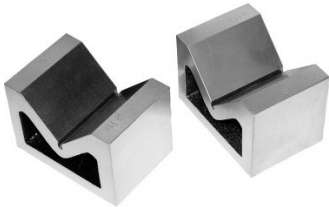
M528
 Face Mill 90° - Positive Rake



L066
 KYOCERA Carbide Inserts - Milling



V004
 Cast Iron Vee Block



R001
 Rotary Table



R0014
 Tilting Rotary Table



P235
 Coolant Pump & Tank



S090A
 Soluble Metal Cutting Fluid - 1 Litre



S090
 Soluble Metal Cutting Fluid - 5 Litre



S076
 Cutting Tool Lubricant Fluid - 500ml



S077
 Drilling, Tapping & Cutting Tool Lubricant Spray - 400g



Product Brochure For M153

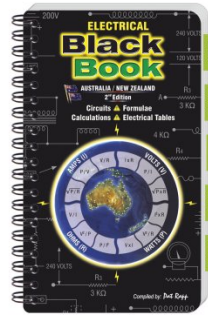
S075
 Cutting Tool Lubricant Paste -
 200g



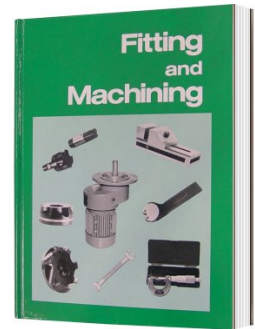
S074
 Cutting Tool Lubricant Paste -
 500g



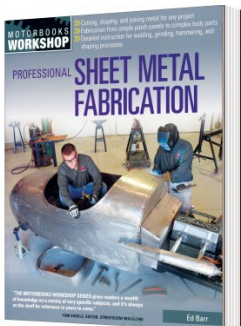
L342
 Electrical Black Book



L341
 Fitting and Machining Technical
 Book



L3455
 Professional Sheet Metal
 Fabrication Book



L300
 Magnetic Swarf Remover



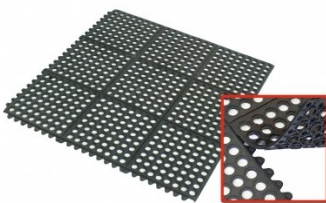
M9991
 Magnetic Floor Sweeper



M800
 Rubber Mat - Anti-Fatigue



M805
 Rubber Mat - Anti-Fatigue



O000
 SpillFix Universal Organic
 Absorbent



O043
 Rust & Corrosion Preventive



O042
 General Purpose Lubricant &
 Corrosion Inhibitor



Product Brochure For M153

O040

Rust & Corrosion Preventive

O044

Rust & Corrosion Preventive

