

Product Brochure For M155

Mill Drill - Geared Head + Variable Speed - SIEG SUPER X3

Table Travel: (X) - 400mm (Y) - 150mm (Z) - 350mm

Dovetail Vertical Column



| | |
|--|-----------------------|
| ORDER CODE: | M155 |
| MODEL: | SUPER X3 |
| Digital Readout: | Optional |
| Type: | Vertical |
| Table Size (mm): | 550 x 160 |
| Column Type: | Dovetail |
| Spindle Taper - Vertical: | 3MT |
| Spindle Taper - Horizontal: | ~ |
| Longitudinal Travel (X-Axis) (mm): | 400 |
| Cross Travel (Y-Axis) (mm): | 150 |
| Vertical Travel (Z-Axis) (mm): | 350 |
| Type of Slides: | Dovetail |
| Ram Travel (mm): | ~ |
| Spindle to Table (mm): | 400 |
| Spindle to Base: | ~ |
| Spindle Travel / Diameter (mm): | 70 / 60 |
| Throat Depth (max.) (mm): | 230 |
| Tilting Head (Left ~ Right): | 30° Left / 90° Right |
| Tilting Head (Forward ~ Back): | Fixed |
| Drilling Capacity (mm): | 25 |
| End Milling Capacity (mm): | 25 |
| Face Milling Capacity (mm): | 50 |
| Power Feed - Quill (mm/rev): | ~ |
| Power Feed - Longitudinal (X-Axis) (mm/min): | Optional |
| Power Feed - Cross (Y-Axis) (mm/min): | ~ |
| Power Feed - Vertical (Z-Axis) (mm/min): | ~ |
| Table T-Slot Size (inch / mm): | 12 |
| Work Table Load Capacity (kg): | 35 |
| Spindle Speeds Vertical (No./ rpm): | Variable (100 - 1750) |
| Spindle Speeds Horizontal (No./ rpm): | ~ |
| Spindle Speeds - Universal Head: | ~ |
| Motor Power - Vertical Spindle (kW / hp): | 1 / 1.3 |
| Motor Power - Horizontal Spindle (kW / hp): | ~ |
| Motor Power - Universal Head: | ~ |
| Voltage / Amperage (V / amp): | 240 / 10 |
| Nett Weight (kg): | 195 |

Description

Excellent quality mill drill machine designed for the model engineer.

The Super X3 mill drill is powered by a 1000W (1.3hp) electronic variable speed motor adjusted by a keypad located on the front control panel.

Heavy duty cast iron body and base for better stability.

Precision machined work table.

Features

- Electronic variable spindle speed
- Digital spindle speed readout display
- Mill head tilts to tilts 30° left & 90° to the right
- Thread tapping function incorporated with forward/reverse buttons on quill handle @ M12 capacity
- Digital readout display for quill depth (Includes LR44 battery)
- Fine feed hand wheel operating quill feed
- Spindle lock for quill
- Table lock on both axis

Product Brochure For M155

- Brush-less DC 1000W variable speed motor (100-1750rpm)
- Precision dovetail vertical slide
- Ground work table with T-slots
- Metric dial graduations @ 0.02mm for X & Y axis
- Vertical dial graduations @ 0.01mm

Includes

- Drill chuck
- 3MT arbor
- Safety cutter guard

Specific Features



Spindle Control Panel



Quill Feed Handle with Fine Adjustment Dial



Head Controls



Tapping Spindle Reverse Button



Table



Table Movement Dial



Table Movement



Tilting Head Scale



Digital spindle speed readout display



Digital Readout for Height Reading



Shown mounted to Optional Stand

Product Brochure For M155

Recommended Accessories

D695
 3-Axis Optimum Digital Readout Counter - 1µm



D694
 1500mm Optimum Magnetic Digital Readout Scale



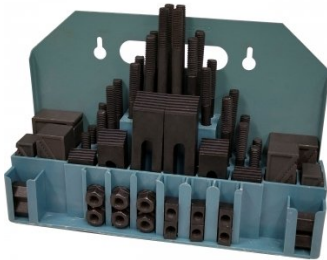
C922B
 Collet & Chuck Set - 8 Piece



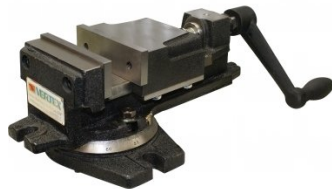
C926
 Collet & Chuck Set - 20 Piece



C0955
 Clamp Kit 58 piece - Workshop Series



V104
 Vertex K-Type Milling Vice



M3301
 Metric HSS Slot Drill & End Mill Set - 10 Piece



M3321
 Imperial HSS Slot Drill & End Mill Set - 10 Piece



Product Brochure For M155

M3280
 13mm HSS End Mill Long Series



M182
 Precision Boring Head Kit



M192
 Boring Head Shank



M180
 Boring Bar Set - 9 piece



M250
 Parallel Set - 8 Piece



M530
 Universal Milling Kit - 4 Piece



M562
 Face Mill Arbor



M515
 Face Mill 45° - Super High-Rake



L065
 KYOCERA Carbide Inserts - Milling



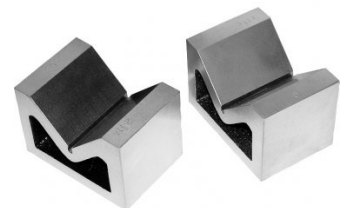
M528
 Face Mill 90° - Positive Rake



L066
 KYOCERA Carbide Inserts - Milling



V004
 Cast Iron Vee Block



Product Brochure For M155

R001
 Rotary Table



R0014
 Tilting Rotary Table



P235
 Coolant Pump & Tank



S090A
 Soluble Metal Cutting Fluid - 1 Litre



S090
 Soluble Metal Cutting Fluid - 5 Litre



S076
 Cutting Tool Lubricant Fluid - 500ml



S077
 Drilling, Tapping & Cutting Tool Lubricant Spray - 400g



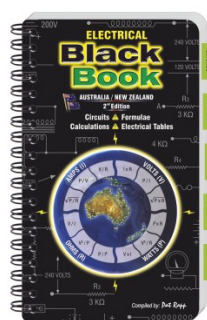
S075
 Cutting Tool Lubricant Paste - 200g



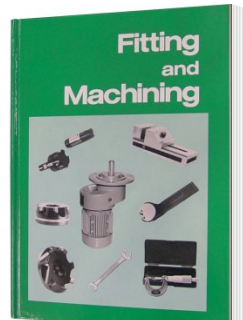
S074
 Cutting Tool Lubricant Paste - 500g



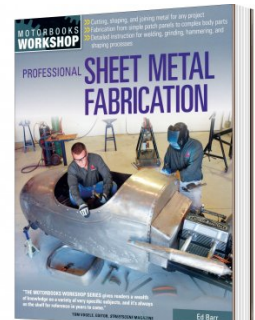
L342
 Electrical Black Book



L341
 Fitting and Machining Technical Book



L3455
 Professional Sheet Metal Fabrication Book



Product Brochure For M155

L300
 Magnetic Swarf Remover



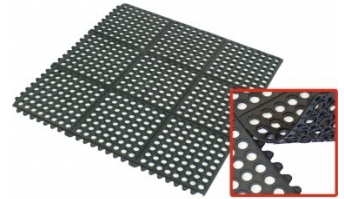
M9991
 Magnetic Floor Sweeper



M800
 Rubber Mat - Anti-Fatigue



M805
 Rubber Mat - Anti-Fatigue



O000
 SpillFix Universal Organic Absorbent



O043
 Rust & Corrosion Preventive



O042
 General Purpose Lubricant & Corrosion Inhibitor



O040
 Rust & Corrosion Preventive



O044
 Rust & Corrosion Preventive

