

Product Brochure For M161

Workshop Turret Milling Machine Horizontal - Vertical - HM-52

Table Travel: (X) - 600mm (Y) - 200mm (Z) - 340mm



Shown with Optional Vice



ORDER CODE:	M161
MODEL:	HM-52
Digital Readout:	Optional
Type:	Vertical & Horizontal
Table Size (mm):	1000 x 240
Column Type:	~
Spindle Taper - Vertical:	NT30
Spindle Taper - Horizontal:	NT30
Longitudinal Travel (X-Axis) (mm):	600
Cross Travel (Y-Axis) (mm):	200
Vertical Travel (Z-Axis) (mm):	340
Type of Slides:	Dovetail
Ram Travel (mm):	500
Spindle to Table (mm):	375
Spindle to Base:	~
Spindle Travel / Diameter (mm):	125 / 90
Throat Depth (max.) (mm):	640
Tilting Head (Left ~ Right):	±90°
Tilting Head (Forward ~ Back):	Fixed
Drilling Capacity (mm):	~
End Milling Capacity (mm):	~
Face Milling Capacity (mm):	~
Power Feed - Quill (mm/rev):	Manual
Power Feed - Longitudinal (X-Axis) (mm/min):	20 - 2000
Power Feed - Cross (Y-Axis) (mm/min):	Optional *
Power Feed - Vertical (Z-Axis) (mm/min):	Optional *
Table T-Slot Size (inch / mm):	14
Work Table Load Capacity (kg):	175
Spindle Speeds Vertical (No./ rpm):	9 (220 - 2400)
Spindle Speeds Horizontal (No./ rpm):	9 (60 - 1350)
Spindle Speeds - Universal Head:	~
Motor Power - Vertical Spindle (kW / hp):	1.5 / 2
Motor Power - Horizontal Spindle (kW / hp):	1.5 / 2
Motor Power - Universal Head:	~
Voltage / Amperage (V / amp):	240 / 10
Nett Weight (kg):	1050

Description

A well-built entry level turret milling vertical and horizontal, drilling machine with a powerful continuous-load 1.5kW motor, intended for trade use. The work table is precision made with adjustable dovetail guides and is recognised for its 600mm X axis by 200mm Y axis travel. There is a three armed handle on the side for drilling also incorporating a fine feed control hand wheel on the front for milling. The screwed belt guard covers on each side of the head offer secure safety whilst providing easy access to the belts and pulleys for speed changing.

Other features include taper roller bearing support for the spindle, easy-to-read drilling depth stop, low voltage work light, 8 piece metric collet chuck set, coolant system, X axis power feed unit, drill chuck, 2 & 3 morse taper adaptors. The combination of generous sized vertical support and rugged cast iron construction throughout reduces vibration and guarantees accurate and chatter-free operation.

Extra Features:

- Swivel Table
- 2 Arbors for the Horizontal spindle

Features

- Swivel table & two arbors for the Horizontal spindle
- Mill head tilts to ±90° left to right.
- 500mm horizontally sliding and rotating ram
- NT30 Horizontal and vertical spindles that are hardened and ground

Product Brochure For M161

- Precision-ground dovetail slide-ways and table
 - Precision milling table incorporating machined T slots
 - Rear concertina slide-way cover
 - Forward and reverse on/off switch
 - Fine handwheel operated quill feed
 - Swarf & splash tray
 - Spindle lock for quill
 - Metric dial graduations @ 0.02mm for X , Y & Z-Axis
 - Vertical dial graduations on hand wheel @ 0.05mm
 - All slides utilise dovetail construction for maximum rigidity
- * Note: X & Y travels maybe reduced due to safety stops
 - * Note: Optional Y & Z power feeds require additional parts & fitting (not included)

Includes

- X-Axis power feed
- Safety cutter guard
- Swarf tray
- Coolant system
- Halogen lamp
- Drill chuck & arbor
- 2 & 3MT adaptors
- 8-piece metric collet chuck set (4-16mm)

Specific Features



Quill Feed Handle and Fine Feed Dial



Horizontal Spindle



X Axis Power Feed with Rapid

HORIZONTAL VERTICAL MILLING MACHINE 30INT-240V	
MODEL	HMS2
DRILLING	30 mm
MILLING	25 mm
MOTOR	1.5 KW
SERIAL NO	
DATE	
ACN 059 717 668	
SPINDLE SPEED (R.P.M)	
DE 220	DG 760
CE 320	AF 1300
DF 400	BG 1600
BE 500	AG 2400
CF 700	

Spindle Speed Chart



Tilting Head Scale



Adjustable Swivel & Sliding Ram



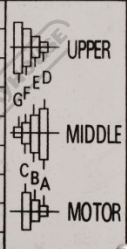
Concertina Slide Way Cover



Swivel Table & Feed Limit Switches

Product Brochure For M161

HORIZONTAL SPINDLE SPEED (R.P.M)		
1	AG	60
2	BG	140
3	CG	175
4	AF	200
5	AE	240
6	BF	460
7	CE	690
8	BD	1090
9	CD	1350



UPPER
MIDDLE
MOTOR

Horizontal Speed Spindle Chart



Vertical Spindle Switch



Knee Feed Handle



Horizontal Spindle Support



Halogen Light



Horizontal Spindle Switch



Coolant Pump



Accessories Included, Metric Collet Chuck, Drill Chuck & Arbor, Morse Taper Adaptors

Recommended Accessories

M229
Power Feed Unit



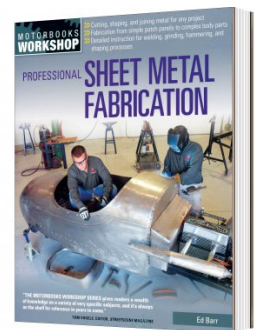
L300
Magnetic Swarf Remover



M9991
Magnetic Floor Sweeper

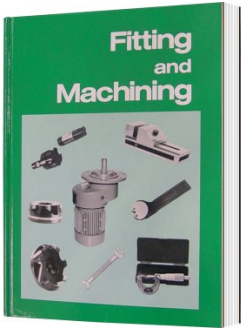


L3455
Professional Sheet Metal Fabrication Book



Product Brochure For M161

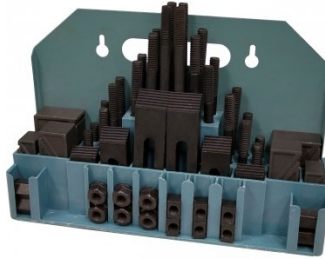
L341
 Fitting and Machining Technical Book



V106
 Vertex K-Type Milling Vice



C0965
 Clamp Kit 58 piece - Workshop Series



M540
 Face Mill Arbor



M530
 Universal Milling Kit - 4 Piece



M333
 Metric HSS Slot Drill & End Mill Set - 12 Piece



M335
 Imperial HSS Slot Drill & End Mill Set - 12 Piece



R004
 Vertex Super Indexing Head



R006
 Vertex Rotary Table



M242
 Angle Plate - Precision Ground



M243
 Angle Plate - Precision Ground



M182
 Precision Boring Head Kit



Product Brochure For M161

M183
 Precision Boring Head Kit



M184
 Precision Boring Head



M193
 Boring Head Shank



M197
 Boring Head Shank



M250
 Parallel Set - 8 Piece



M252
 Parallel Set - 18 Piece



M180
 Boring Bar Set - 9 piece



M181
 Boring Bar Set - 12 piece



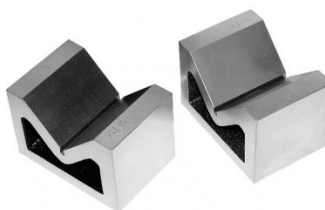
V010
 Alloy Steel Vee Block



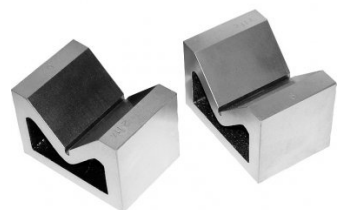
V003
 Cast Iron Vee Block



V004
 Cast Iron Vee Block



V006
 Cast Iron Vee Block

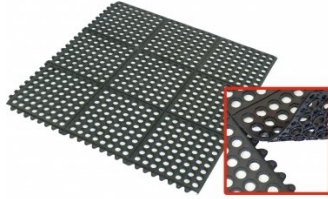


Product Brochure For M161

M800
 Rubber Mat - Anti-Fatigue



M805
 Rubber Mat - Anti-Fatigue



S090A
 Soluble Metal Cutting Fluid - 1
 Litre



S090
 Soluble Metal Cutting Fluid - 5
 Litre



S076
 Cutting Tool Lubricant Fluid -
 500ml



S077
 Drilling, Tapping & Cutting Tool
 Lubricant Spray - 400g



S075
 Cutting Tool Lubricant Paste -
 200g



S074
 Cutting Tool Lubricant Paste -
 500g



O000
 SpillFix Universal Organic
 Absorbent



O043
 Rust & Corrosion Preventive



O042
 General Purpose Lubricant &
 Corrosion Inhibitor



O040
 Rust & Corrosion Preventive



Product Brochure For M161

O044

Rust & Corrosion Preventive

