

Product Brochure For M501

Chamfer Cutter

Ø5 - Ø20mm Range
 Insert tip not included

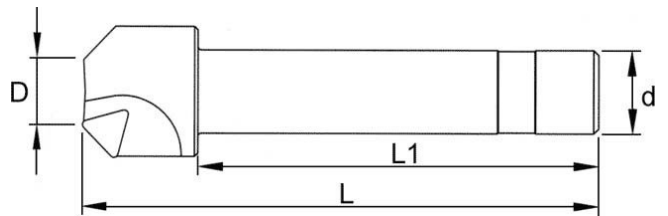
On Sale

Ex GST
~~\$50.00~~
\$45.45

Inc GST
~~\$55.00~~
\$50.00



ORDER CODE:	M501
Range (mm):	5 - 20
d (mm):	20
D (mm):	5
L (mm):	100
L1 (mm):	65
Number of Inserts (No.):	1
Suits Cutters:	TPMN1603 (L066)



Description

NOTE: Inserts not included
 Use insert TPMN1603 (L066)

Features

- 45° high speed chamfer cutter.

Product Brochure For M501

Recommended Accessories

L066

KYOCERA Carbide Inserts -
Milling

ML091

Cutter Part - Screw

ML092

Cutter Part - Insert Clamp

